

## ▼ RT Series, Multi-Stage Telescopic Cylinders



Rated Pressure: 70MPa

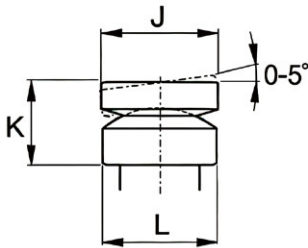
Rated Tonnage: 14-31.5ton

Stroke Range: 270-600mm

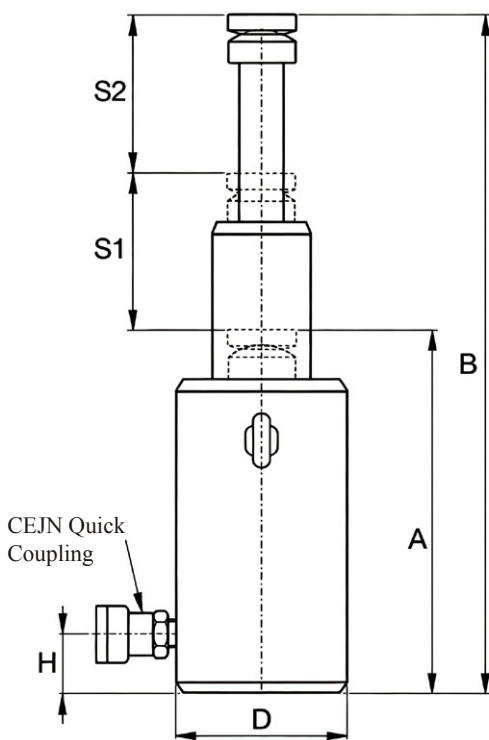
- Allowable side load up to 4% at maximum load capacity
- Nitrided stop ring prevents plunger over-stroke
- Low collapsed body height
- Adopts gas nitriding and post-oxidation surface treatment for superior corrosion resistance and side load resistance

### ► Multi-Stage Cylinder

Plunger Stage	Load Capacity	Stroke Performance
1st Stage	Maximum	Minimum
2nd Stage	Lower than 1st stage	Longer than 1st stage
3rd Stage	Minimum	Maximum



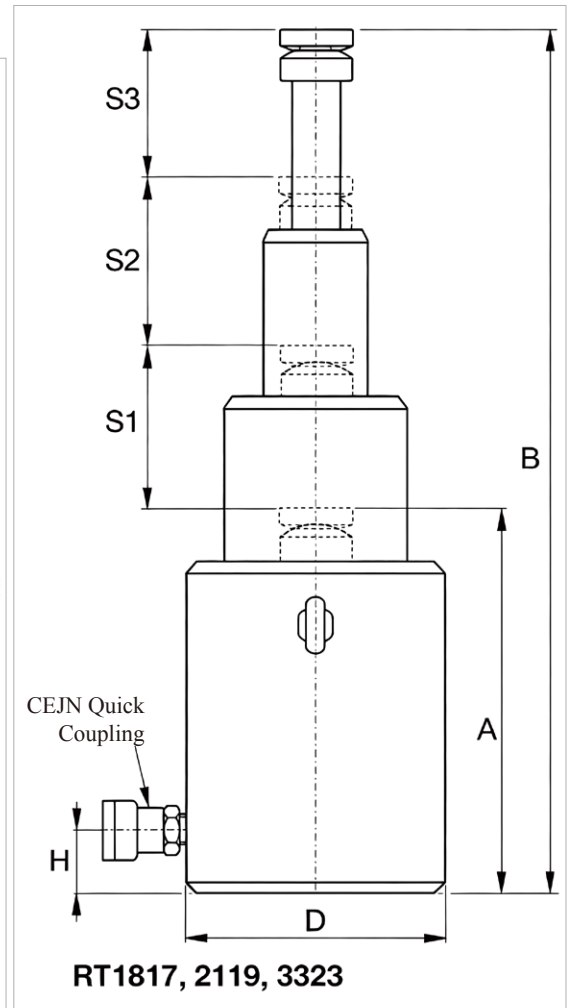
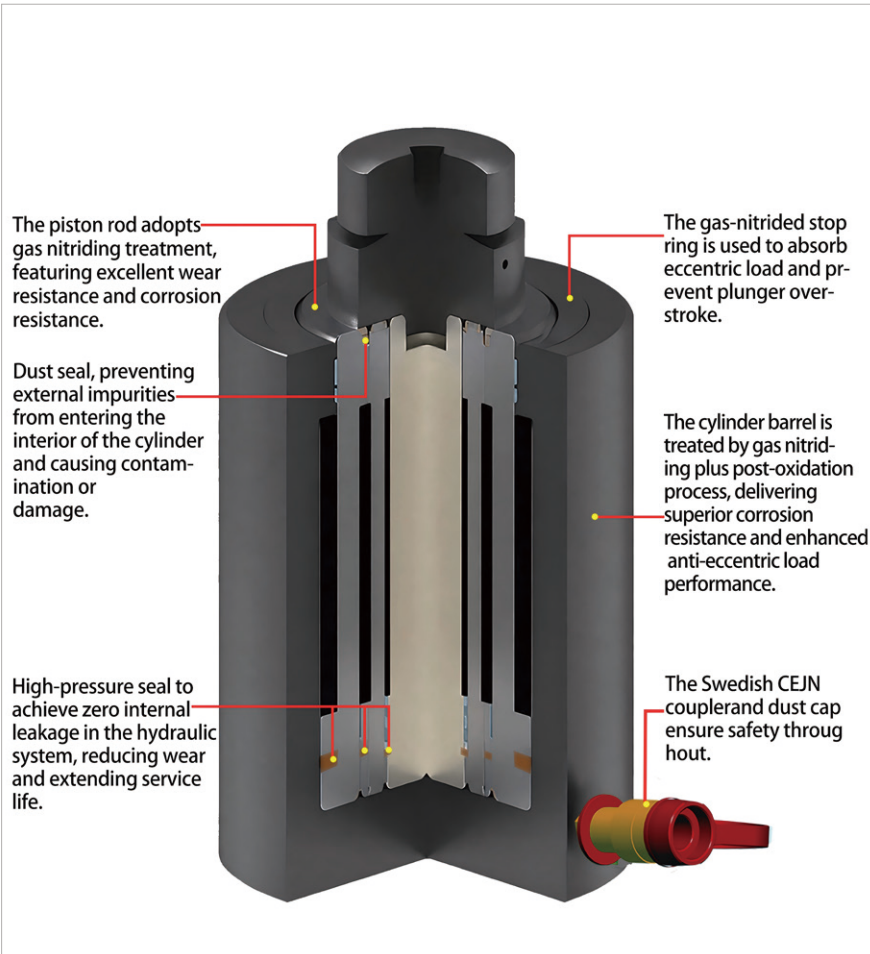
All RT-series cylinders are equipped with an integral tilt saddle with a maximum tilt angle of up to 5 degrees.



RT1510, 2111, 3311

Model Number	Cylinder Capacity at Maximum Stroke (ton)	Maximum Stroke (mm)	Collapsed Height A (mm)	Extended Height B (mm)	Oil Capacity (cm <sup>3</sup> )
RT1510	14.0 (137)	270	283	553	944
RT1817	17.0 (166)	435	345	780	3092
RT2111	20.2 (198)	300	317	617	1487
RT2119	20.2 (198)	500	395	895	4661
RT3311	31.5 (309)	300	352	652	2359
RT3323	31.5 (309)	600	476	1076	8816

## ▼ RT Cylinder Performance Introduction



1st Stage		2nd Stage		3rd Stage		Outside Dia. D (mm)	Bottom to Advance Port H (mm)	Saddle Dia. J (mm)	Saddle Protrusion from Pl. K (mm)	Saddle Support L (mm)	Weight (kg)	Model Number
Capacity ton (kN)	Stroke S1 (mm)	Capacity ton (kN)	Stroke S2 (mm)	Capacity ton (kN)	Stroke S3 (mm)							
36 (352)	135	14 (137)	135	-	-	110	220	60	49	60	15.1	RT1510
95 (929)	145	41 (397)	145	17.0 (166)	145	170	277	80	73	85	40.3	RT1817
51 (496)	150	20 (198)	150	-	-	125	233	60	53	66	21.8	RT2111
126 (1237)	170	51 (496)	170	20.2 (198)	160	220	334	90	83	100	67.3	RT2119
81 (792)	150	32 (309)	150	-	-	160	255	80	66	89	39.9	RT3311
202 (1985)	200	81 (792)	200	31.5 (309)	220	250	444	110	111	123	124	RT3323