

▼ RRH Double-Acting Hollow Plunger Cylinders



Rated Pressure: 70MPa

Rated Tonnage: 30 -145ton

Stroke Range: 38-258mm

Center Hole Dia: 33-79.2mm

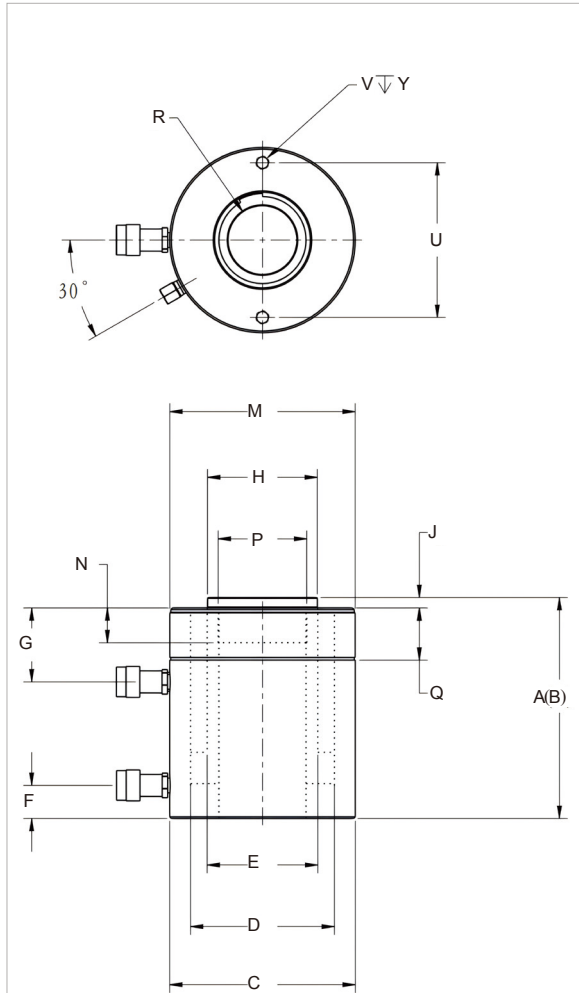
- The cylinder body, piston and stop ring are treated with gas nitriding + post-oxidation, providing excellent wear resistance, self-lubrication and corrosion resistance.
- The overall paint treatment enhances the overall recognizability and corrosion resistance.
- The relief valve protects the cylinder from damage during overload.
- The outer ring thread allows for easier installation.(except RRH1001, RRH1508, RRH2308, RRH4008, RRH6008)
- Double-acting design enables quick retraction.
- All models are equipped with CEJN quick couplings and dust caps.
- Industrial-grade dust seals reduce contamination and extend the service life of the hydraulic cylinder.
- All tonnage cylinders are equipped with certified G80 high-strength lifting rings.
- High-grade polyurethane seals are adopted, featuring good sealing performance, wear resistance and long service life.

RRH Steel Base Plate Mounting Holes(mm)			
Model	Bolt Circle U(mm)	Thread V(mm)	Thread Depth Y(mm)
RRH307	92.2	3/8" - 16 UNC	14
RRH3010	92.2	3/8" - 16 UNC	14
RRH603	130.3	1/2" - 13 UNC	14
RRH606	130.3	1/2" - 13 UNC	14
RRH6010	130.3	1/2" - 13 UNC	14
RRH1001	177.8	5/8" - 11 UNC	19
RRH1003	177.8	5/8" - 11 UNC	19
RRH1006	177.8	5/8" - 11 UNC	19
RRH10010	177.8	5/8" - 11 UNC	19
RRH1508	213.4	5/8" - 11 UNC	22.0
RRH2308	260.0	(4x) M16 × 2	25.0
RRH4008	340.0	(4x) M24 × 3	36.0
RRH6008	415.0	(4x) M24 × 3	36.0

▼ RRH Specification Sheet:

Capacity (ton)	Stroke (mm)	Model	Maximum load capacity (kN)		The effective area of the cylinder (cm ²)		Hydraulic oil capacity (cm ³)		Collapsed Height A (mm)	Extended Height B (mm)	Outer Diameter C (mm)	Inner Diameter D (mm)
			push	pull	push	pull	push	pull				
30	178	RRH307	326	213	46.6	30.4	829	541	330	508	114	88.9
	258	RRH3010	326	213	46.6	30.4	1202	784	431	689	114	88.9
60	89	RRH603	576	380	82.3	54.2	733	482	247	336	159	123.9
	166	RRH606	576	380	82.3	54.2	1366	900	323	489	159	123.9
	257	RRH6010	576	380	82.3	54.2	2115	1393	438	695	159	123.9
95	38	RRH1001	931	612	133	87.4	505	333	165	203	213	165.1
95	76	RRH1003	931	612	133	87.4	1011	666	254	330	213	165.1
	153	RRH1006	931	612	133	87.4	2035	1337	342	495	213	165.1
	257	RRH10010	931	612	133	87.4	3420	2246	460	717	212	165.1
145	203	RRH1508	1429	718	204.1	102.6	4144	2083	349	552	247	190.5
220	200	RRH2308	2164	967	309.3	138.2	6185	2764	431	631	310	240.0
410	200	RRH4008	4036	1678	576.7	239.7	11534	4795	486	686	400	305.5
600	200	RRH6008	5937	1896	848.2	271	16964	5419	525	725	480	370.0

▼ RRH Outline Dimensional :



▼ RRH Performance Introduction :

Dust seal, preventing external impurities from entering the interior of the cylinder and causing contamination or damage.

The gas-nitrided stop ring is used to absorb eccentric load and prevent plunger over-travel.

The cylinder body is treated by gas nitriding post-oxidation process, followed by external painting to deliver superior corrosion resistance.

Dust seal, preventing external impurities from entering the interior of the cylinder and causing contamination or damage.

High-pressure seal to achieve zero internal leakage in the hydraulic system, reducing wear and extending service life.

Detachable hard seat to prevent plunger damage when contacting rough surfaces.

The return pressure protection safety valve effectively prevents overpressure caused by piping errors.

The piston rod adopts gas nitriding treatment, featuring excellent wear resistance and corrosion resistance.

The Swedish CEJN coupler and dust cap ensure safety throughout.



1. The cylinder body, piston and stop ring are all treated with gas nitriding and post-oxidation, delivering excellent wear resistance, self-lubricating property and corrosion resistance.

2. Overall surface painting is applied secondarily to enhance identification and overall corrosion resistance.



Plunger Diameter E (mm)	Distance from Top End to Oil Return Port G (mm)	Saddle Diameter H (mm)	Saddle Protrusion Height J (mm)	Thread P	Plunger Thread Length N (mm)	Collar Thread M	Collar Thread Length Q (mm)	Center Hole Diameter R (mm)	Weight (kg)	Model
63.5	60	63	9	1 13/16"-16	35	4 1/2"-12	42	33.3	21	RRH307
63.5	60	63	9	1 13/16"-16	35	4 1/2"-12	42	33.3	27	RRH3010
91.9	66	91	12	2 3/4"-16	35	6 1/4"-12	48	53.8	28	RRH603
91.9	66	91	12	2 3/4"-16	35	6 1/4"-12	48	53.8	35	RRH606
91.9	66	91	12	2 3/4"-16	35	6 1/4"-12	48	53.8	45	RRH6010
127	44	126	12	4"-16	40	-	-	79.2	33	RRH1001
127	85	126	12	4"-16	40	8 3/8"-12	60	79.2	61	RRH1003
127	85	126	12	4"-16	40	8 3/8"-12	60	79.2	79	RRH1006
127	85	126	12	4"-16	40	8 3/8"-12	60	79.2	106	RRH10010
152.4	60	127	4	4 1/4"-12	40	-	-	79.2	111	RRH1508
220	91	195	18	M150×2	50	-	-	105	190	RRH2308
250	111	245	18	M160×2	70	-	-	110	383	RRH4008
320	115	315	23	M190×2	90	-	-	135	611	RRH6008