

▼ RCH Single-Acting Hollow Plunger Cylinders



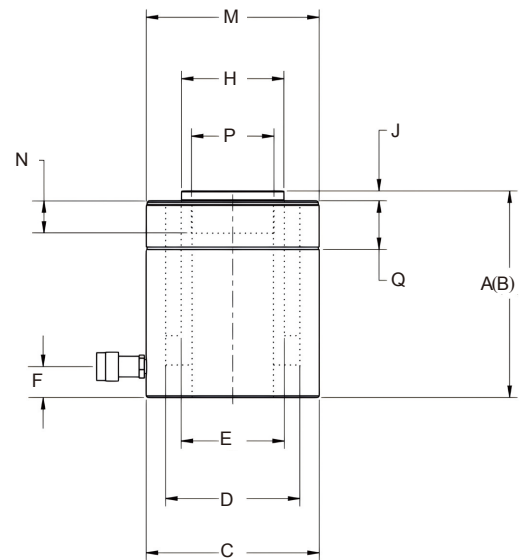
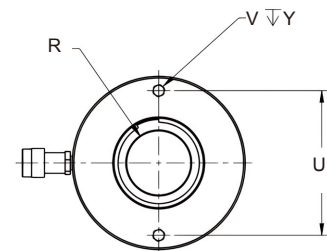
Rated Pressure: 70MPa

Rated Tonnage: 12 -95ton

Stroke Range: 8-155mm

Center Hole Dia: 17.3-79.0mm

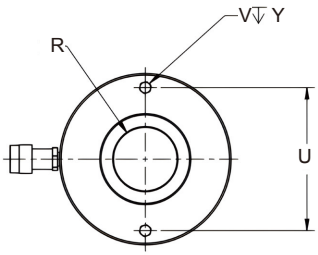
- The cylinder body, piston and stop ring are treated by gas nitriding plus post-oxidation, delivering excellent wear resistance, self-lubricating property and corrosion resistance.
- The overall surface is re-painted to enhance overall identifiability and corrosion resistance.
- The outer thread protective sleeve made of reinforced nylon effectively protects the outer ring thread of the hydraulic cylinder.
- The hollow plunger design is applicable for both tension and compression operations.
- Single-acting type with spring return.
- High-tonnage hydraulic cylinders are equipped with certified G80 high-strength lifting rings.
- All models are standardly fitted with CEJN quick couplings and dust caps.
- Base mounting holes are configured for all models.
- Polyurethane seals are adopted with superior sealing performance, high wear resistance and long service life.
- Threaded holes are arranged on the hollow piston for mounting non-standard saddles to adapt to diversified working conditions.
- Industrial-grade dust rings reduce contamination and extend the service life of hydraulic cylinders.
- All-weather protection from inside to outside.



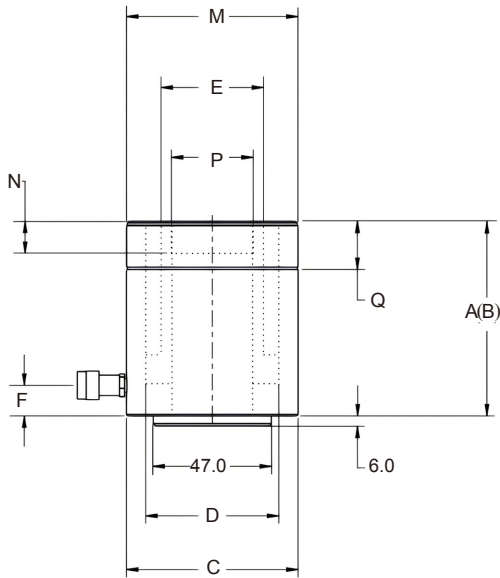
RCH202-RCH1003

▼ RCH Type Specification Sheet:

Capacity (ton)	Stroke (mm)	Model Number	Effective Area (cm ²)	Oil Capacity (cm ³)	Collapsed Height A (mm)	Extended Height B (mm)	Outside Diameter C (mm)	Bore Diameter D (mm)	Plunger Diameter E (mm)	Bottom to Advance Port F (mm)
12(125)	8	RCH120	17.9	14	55	63	70	54.1	35.1	9
	42	RCH121	17.9	75	120	162	70	54.1	35.1	25
	42	RCH1211	17.9	75	120	162	70	54.1	35.1	25
	76	RCH123	17.9	136	184	260	70	54.1	35.1	25
20(215)	49	RCH202	30.7	150	162	211	98.5	73.1	54.1	19
	155	RCH206	30.7	476	306	461	98.5	73.1	54.1	25
30(326)	64	RCH302	46.6	298	178	242	114	88.9	63.5	21
	155	RCH306	46.6	722	330	485	114	88.9	63.5	25
60(576)	76	RCH603	82.3	626	247	323	159	123.9	91.9	31
	153	RCH606	82.3	1259	323	476	159	123.9	91.9	31
95(931)	76	RCH1003	133	1011	254	330	213	165.1	127	38



◀ Both HCH121 and HCH1211 feature a 47 mm diameter projection, extending 6 mm above the base.



RCH120-RCH123

RCH Steel Base Plate Mounting Holes(mm)			
Model	Bolt Circle U(mm)	Thread V(mm)	Thread Depth Y(mm)
RCH120	50.8	5/16" - 18 UNC	9
RCH121	-	-	-
RCH1211	-	-	-
RCH123	50.8	5/16" - 18 UNC	12.7
RCH202	82.6	3/8" - 16 UNC	9.4
RCH206	82.6	3/8" - 16 UNC	9.4
RCH302	92.2	3/8" - 16 UNC	14
RCH306	92.2	3/8" - 16 UNC	14
RCH603	130.3	1/2" - 13 UNC	14
RCH606	130.3	1/2" - 13 UNC	14
RCH1003	177.8	5/8" - 11 UNC	19

▼ RCH 油缸性能介绍:

- The gas-nitrided stop ring is used to absorb eccentric load and prevent plunger over-travel.
- The cylinder body is treated by gas nitriding post-oxidation process, followed by external painting to deliver superior corrosion resistance.
- Dust seal, preventing external impurities from entering the interior of the cylinder and causing contamination or damage.
- High-pressure seal to achieve zero internal leakage in the hydraulic system, reducing wear and extending service life.
- Detachable hard seat to prevent plunger damage when contacting rough surfaces.
- Dust seal, preventing external impurities from entering the interior of the cylinder and causing contamination or damage.
- The piston rod adopts gas nitriding treatment, featuring excellent wear resistance and corrosion resistance.
- Powerful spring for rapid return stroke.
- The Swedish CEJN coupler and dust cap ensure safety throughout.

- The cylinder body, piston and stop ring are all treated with gas nitriding and post-oxidation, delivering excellent wear resistance, self-lubricating property and corrosion resistance.
- Overall surface painting is applied secondarily to enhance identification and overall corrosion resistance.

	Saddle Diameter H (mm)	Saddle Protrusion Height J (mm)	Plunger Internal Thread P	Plunger Thread Length N (mm)	Collar Thread Specification M	Collar Thread Depth Q (mm)	Central Hole Diameter R (mm)	Weight (kg)	Model
	-	-	3/4"-16 UN	16	2 3/4"-16	30	17.3	1.5	RCH120
	-	-	-	-	2 3/4"-16	30	19.5	2.8	RCH121
	-	-	3/4"-16 UN	16	2 3/4"-16	30	17.3	2.8	RCH1211
	-	-	-	-	2 3/4"-16	30	19.5	4.4	RCH123
	54	9.7	1 9/16"-16 UN	19	3 7/8"-12	38	26.9	7.7	RCH202
	54	9.7	1 9/16"-16 UN	19	3 7/8"-12	38	26.9	14.1	RCH206
	63	9	1 13/16"-16 UN	22	4 1/2"-12	42	33.3	10.9	RCH302
	63	9	1 13/16"-16 UN	22	4 1/2"-12	42	33.3	21.8	RCH306
	91	12	2 3/4"-16 UN	19	6 1/4"-12	48	53.8	28.1	RCH603
	91	12	2 3/4"-16 UN	19	6 1/4"-12	48	53.8	35.4	RCH606
	126	12	4"-16 UN	25	8 3/8"-12	60	79	63	RCH1003