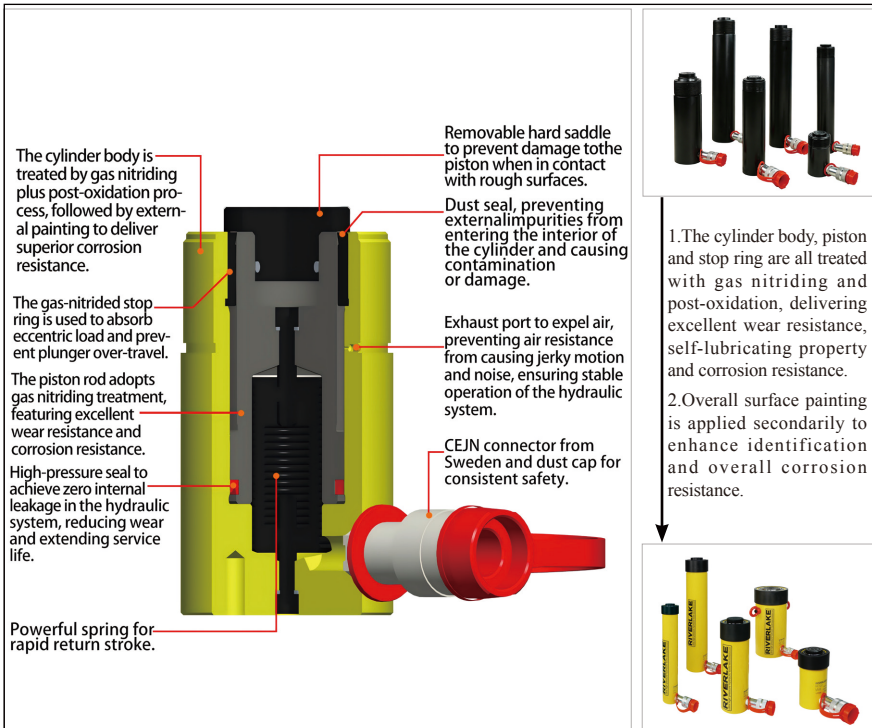


▼ RC Universal Single-Acting Cylinders



- The cylinder body, piston and stop ring are treated with gas nitriding and post-oxidation, offering outstanding wear resistance, self-lubricity and corrosion resistance.
- Secondary overall painting is adopted to improve overall recognizability and corrosion resistance.
- The outer thread protective sleeve made of reinforced nylon effectively protects the outer ring thread of the oil cylinder.
- High-tonnage cylinders are equipped with high-strength G80 lifting rings.
- Built-in hidden air vent enables faster and smoother retraction.
- Polyurethane seals feature superior sealing performance, high wear resistance and long service life.
- The plunger wiper seal reduces contamination and extends the service life of the hydraulic cylinder.
- Pre-machined outer ring threads, plunger threads and base mounting holes simplify connection and installation.
- Suitable for all mounting positions and orientations.

▼ RC Performance Introduction:



Rated Pressure: 70MPa

Rated Tonnage: 5-95ton

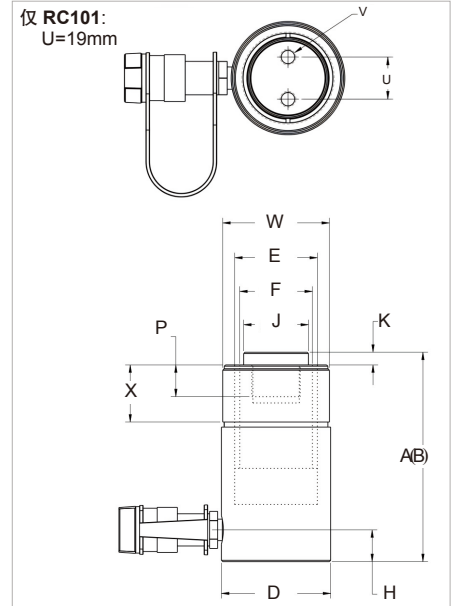
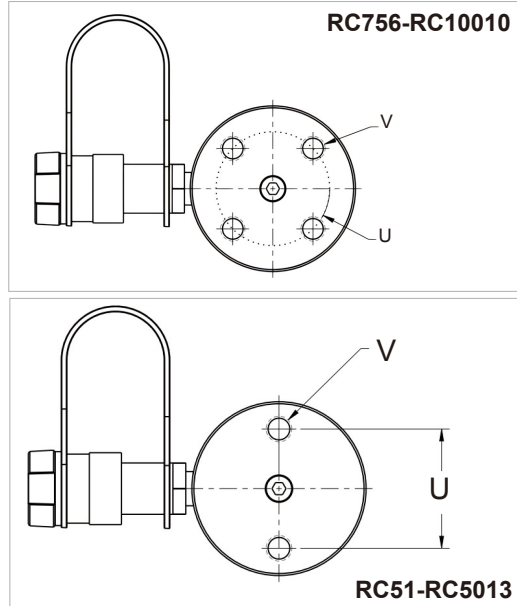
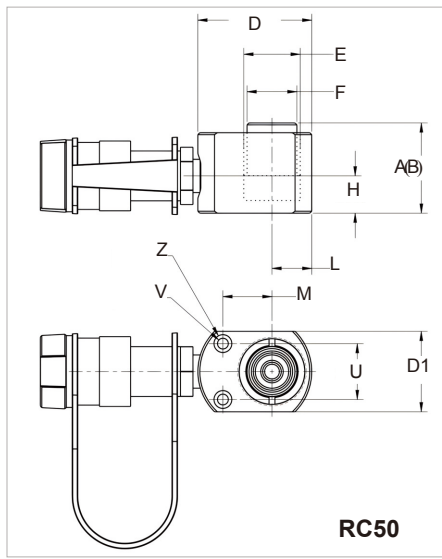
Stroke Range: 16-362mm

► Note:

- RC50 cylinder has a non-removable grooved saddle and no collar thread.
- RC50: D1 = 41 mm, L = 20 mm, M = 25 mm.
- RC101 has plunger with two thread holes and non-removable saddle.

Capacity (ton (kN))	Stroke (mm)	Model Number	Cylinder Effective Area (cm ²)	Oil Capacity (cm ³)	Collapsed Height A (mm)	Extended Height B (mm)
5 (45)	16	RC50	6.4	10	41	57
	25	RC51	6.4	16	110	135
	79	RC53	6.4	50	165	244
	127	RC55	6.4	83	216	343
	177	RC57	6.4	115	273	450
10 (101)	232	RC59	6.4	151	324	556
	26	RC101	14.4	38	90	116
	54	RC102	14.4	78	121	175
	105	RC104	14.4	152	171	276
	156	RC106	14.4	226	248	404
	203	RC108	14.4	294	298	501
15 (142)	257	RC1010	14.4	373	349	606
	304	RC1012	14.4	441	400	704
	356	RC1014	14.4	516	451	807
	25	RC151	20.3	51	124	149
	51	RC152	20.3	104	149	200
	101	RC154	20.3	205	200	301
	152	RC156	20.3	308	271	423
25 (232)	203	RC158	20.3	411	322	525
	254	RC1510	20.3	516	373	627
	305	RC1512	20.3	619	424	729
	356	RC1514	20.3	723	475	831
	26	RC251	33.3	86	140	166
	50	RC252	33.3	166	165	215
	102	RC254	33.3	339	216	318
	158	RC256	33.3	525	273	431
30 (295)	210	RC258	33.3	697	324	534
	261	RC2510	33.3	867	375	636
	311	RC2512	33.3	1033	425	736
	362	RC2514	33.3	1202	476	838
	209	RC308	42.9	880	387	596
50 (498)	51	RC502	71.3	362	176	227
	101	RC504	71.3	719	227	328
	159	RC506	71.3	1131	283	442
	260	RC5010	71.3	1855	384	644
75 (718)	337	RC5013	71.3	2399	460	797
	156	RC756	102.6	1601	286	442
	333	RC7513	102.6	3417	492	825
95 (933)	51	RC1002	133.1	676	219	270
	168	RC1006	133.1	2239	357	525
	260	RC10010	133.1	3466	449	709

▼ RC Outline Dimensional



Outside Dia. D (mm)	Bore Dia. E (mm)	Plunger Dia. F (mm)	Base to Adv. Port H (mm)	Saddle Dia. J (mm)	Saddle Prot. from Plgr. K (mm)	Plunger Internal Thread O	Plunger Thread Length P (mm)	Steel Base Plate Mounting Holes			Base Mounting Holes - Thread W	Collar Thread Length X (mm)	Model Number	
								B o l t C i r c l e U (mm)	Thread V (mm)	Thread D e p t h Y (mm)				
58	28.6	25.4	19	—	—	—	—	29	5.6 mm	—	—	1	RC50	
38	28.6	25.4	19	25	6	3/4" - 16 UN	14	25	1/4" - 20 UNC	14	1 1/2" - 16 UN	28	1	RC51
38	28.6	25.4	19	25	6	3/4" - 16 UN	14	25	1/4" - 20 UNC	14	1 1/2" - 16 UN	28	1.5	RC53
38	28.6	25.4	19	25	6	3/4" - 16 UN	14	25	1/4" - 20 UNC	14	1 1/2" - 16 UN	28	1.9	RC55
38	28.6	25.4	19	25	6	3/4" - 16 UN	16	25	1/4" - 20 UNC	14	1 1/2" - 16 UN	28	2.4	RC57
38	28.6	25.4	19	25	6	3/4" - 16 UN	16	25	1/4" - 20 UNC	14	1 1/2" - 16 UN	28	2.8	RC59
57	42.8	38.1	19	—	—	#10 - 24 UN	6	40	5/16" - 18 UNC	12	2 1/4" - 14 UN	27	1.8	RC101
57	42.8	38.1	19	35	6	1" - 8 UN	19	40	5/16" - 18 UNC	12	2 1/4" - 14 UN	27	2.3	RC102
57	42.8	38.1	19	35	6	1" - 8 UN	19	40	5/16" - 18 UNC	12	2 1/4" - 14 UN	27	3.3	RC104
57	42.8	38.1	19	35	6	1" - 8 UN	19	40	5/16" - 18 UNC	12	2 1/4" - 14 UN	27	4.4	RC106
57	42.8	38.1	19	35	6	1" - 8 UN	19	40	5/16" - 18 UNC	12	2 1/4" - 14 UN	27	5.4	RC108
57	42.8	38.1	19	35	6	1" - 8 UN	19	40	5/16" - 18 UNC	12	2 1/4" - 14 UN	27	6.4	RC1010
57	42.8	38.1	19	35	6	1" - 8 UN	19	40	5/16" - 18 UNC	12	2 1/4" - 14 UN	27	6.8	RC1012
57	42.8	38.1	19	35	6	1" - 8 UN	19	40	5/16" - 18 UNC	12	2 1/4" - 14 UN	27	8.2	RC1014
70	50.8	41.3	19	38	9	1" - 8 UN	25	48	3/8" - 16 UNC	12	2 3/4" - 16 UN	30	3.3	RC151
70	50.8	41.3	19	38	9	1" - 8 UN	25	48	3/8" - 16 UNC	12	2 3/4" - 16 UN	30	4.1	RC152
70	50.8	41.3	19	38	9	1" - 8 UN	25	48	3/8" - 16 UNC	12	2 3/4" - 16 UN	30	5	RC154
70	50.8	41.3	25	38	9	1" - 8 UN	25	48	3/8" - 16 UNC	12	2 3/4" - 16 UN	30	6.8	RC156
70	50.8	41.3	25	38	9	1" - 8 UN	25	48	3/8" - 16 UNC	12	2 3/4" - 16 UN	30	8.2	RC158
70	50.8	41.3	25	38	9	1" - 8 UN	25	48	3/8" - 16 UNC	12	2 3/4" - 16 UN	30	9.5	RC1510
70	50.8	41.3	25	38	9	1" - 8 UN	25	48	3/8" - 16 UNC	12	2 3/4" - 16 UN	30	10.9	RC1512
70	50.8	41.3	25	38	9	1" - 8 UN	25	48	3/8" - 16 UNC	12	2 3/4" - 16 UN	30	11.8	RC1514
86	65.1	57.2	25	51	10	1 1/2" - 16 UN	25	59	1/2" - 13 UNC	19	3 5/16" - 12 UN	49	5.9	RC251
86	65.1	57.2	25	51	10	1 1/2" - 16 UN	25	59	1/2" - 13 UNC	19	3 5/16" - 12 UN	49	6.4	RC252
86	65.1	57.2	25	51	10	1 1/2" - 16 UN	25	59	1/2" - 13 UNC	19	3 5/16" - 12 UN	49	8.2	RC254
86	65.1	57.2	25	51	10	1 1/2" - 16 UN	25	59	1/2" - 13 UNC	19	3 5/16" - 12 UN	49	10	RC256
86	65.1	57.2	25	51	10	1 1/2" - 16 UN	25	59	1/2" - 13 UNC	19	3 5/16" - 12 UN	49	12.2	RC258
86	65.1	57.2	25	51	10	1 1/2" - 16 UN	25	59	1/2" - 13 UNC	19	3 5/16" - 12 UN	49	14.1	RC2510
86	65.1	57.2	25	51	10	1 1/2" - 16 UN	25	59	1/2" - 13 UNC	19	3 5/16" - 12 UN	49	16.3	RC2512
86	65.1	57.2	25	51	10	1 1/2" - 16 UN	25	59	1/2" - 13 UNC	19	3 5/16" - 12 UN	49	17.7	RC2514
102	73	57.2	29	51	10	1 1/2" - 16 UN	25	59	1/2" - 13 UNC	16	3 5/16" - 12 UN	49	18.1	RC308
127	95.2	79.4	33	71	2	—	—	95	1/2" - 13 UNC	19	5" - 12 UN	55	15	RC502
127	95.2	79.4	33	71	2	—	—	95	1/2" - 13 UNC	19	5" - 12 UN	55	19.1	RC504
127	95.2	79.4	35	71	2	—	—	95	1/2" - 13 UNC	19	5" - 12 UN	55	23.1	RC506
127	95.2	79.4	35	71	2	—	—	95	1/2" - 13 UNC	19	5" - 12 UN	55	31.8	RC5010
127	95.2	79.4	35	71	2	—	—	95	1/2" - 13 UNC	19	5" - 12 UN	55	37.6	RC5013
146	114.3	95.3	30	71	2	—	—	114	5/8" - 13 UNC	16	5 3/4" - 12 UN	44	29.5	RC756
146	114.3	95.3	30	71	2	—	—	114	5/8" - 13 UNC	16	5 3/4" - 12 UN	44	59	RC7513
178	130.2	104.8	41	71	2	—	—	140	3/4" - 10 UNC	25	6 7/8" - 12 UN	44	36.7	RC1002
178	130.2	104.8	41	71	2	—	—	140	3/4" - 10 UNC	25	6 7/8" - 12 UN	44	59	RC1006
178	130.2	104.8	41	71	2	—	—	140	3/4" - 10 UNC	25	6 7/8" - 12 UN	44	72.6	RC10010