

▼ PLC Valve-Controlled Synchronization System



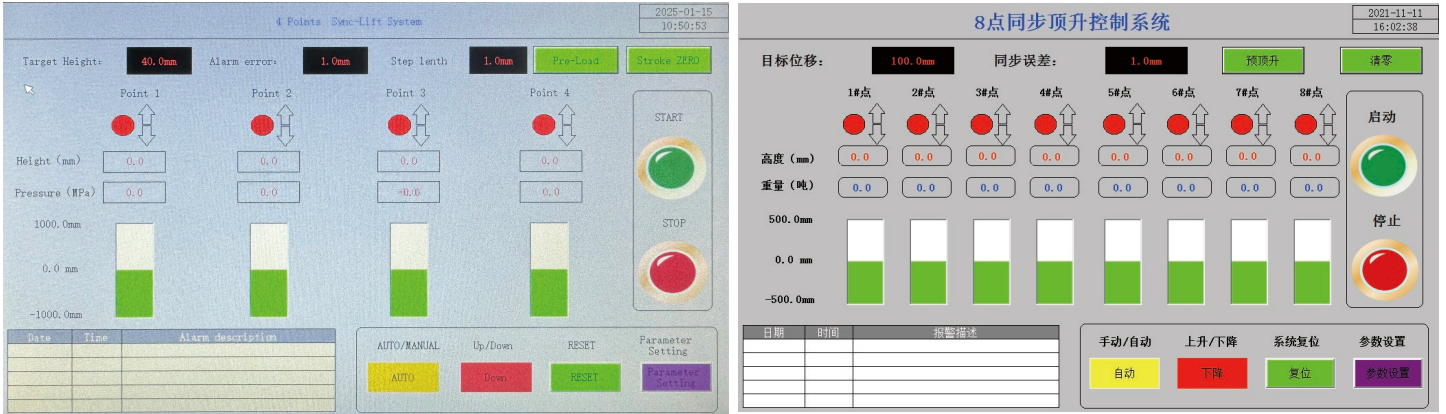
Technical features:

- ◆ 10 inch touch screen, built-in control program, parameter open setting.
- ◆ Siemens computing and analog processing module.
- ◆ High protection PLC electric control box, optional line control independent touch screen.
- ◆ Configure 20 meters /30 meters displacement sensor data line.
- ◆ Function configuration: Sensor parameter setting, pre-jacking pressure setting, overload alarm setting, sensor loss alarm, out-of-tolerance alarm, pre-jacking/synchronous jacking/synchronous drop function panel interface, clear identification of tubing, displacement sensor, cylinder interface.
- ◆ Optional multi-pump station link control function, Internet remote control function, etc.

▼ PLC Synchronous System Specification Table:

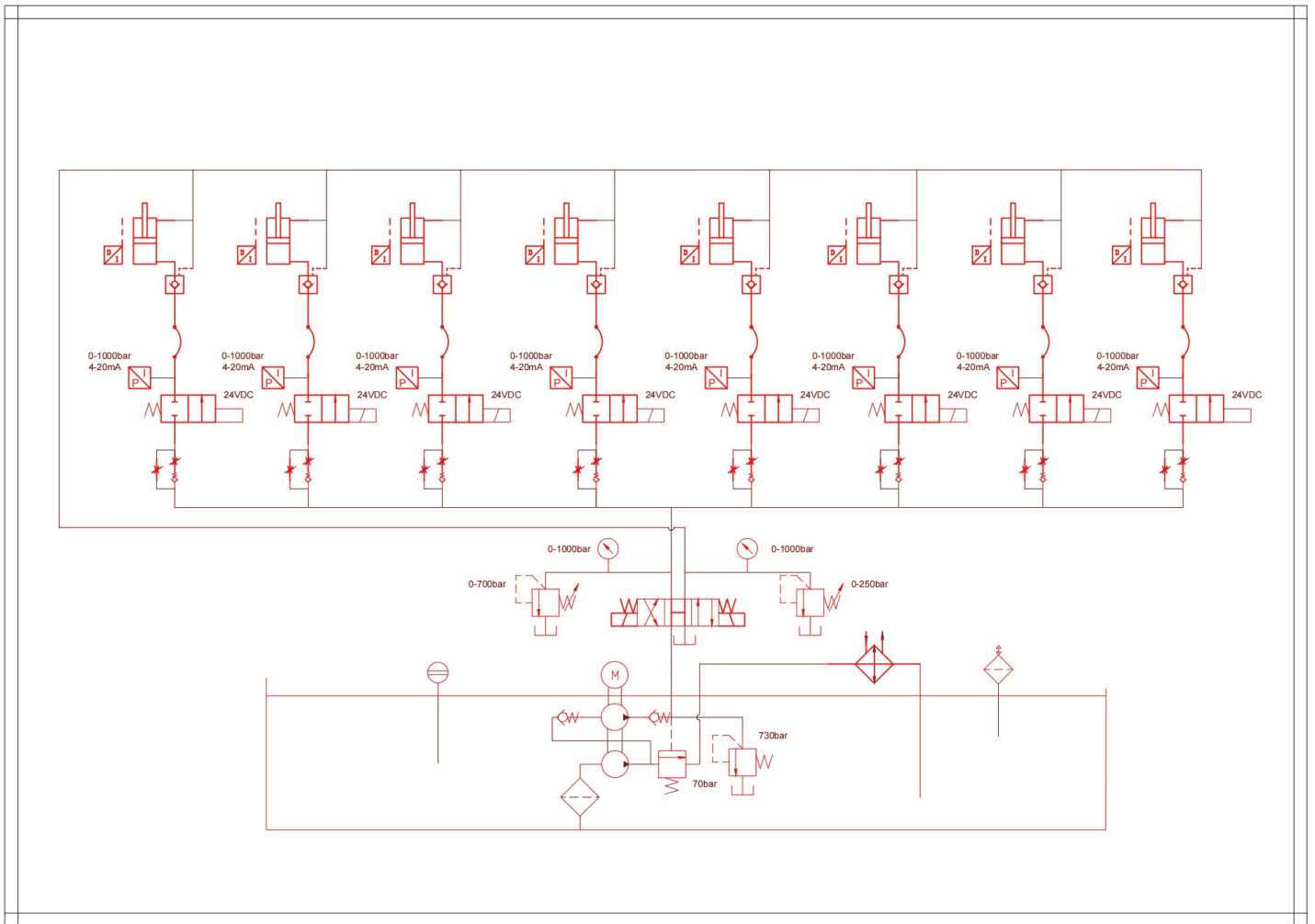
Model Number	Voltage (VAC)	Phase (PH)	Power (KW)	Flow Rate (L/Min)	Available Oil (L)	Number of Points	Displacement Sensor Range (MM)	Cable Length
HE5060LL-4	230	1	1.5	1	60	4	1000	30
HE7080LL-4	380V/230	3	2.2	1.5	80	4	1000	30
HE84120LL-4	380/440/660	3	4	2.3	120	4	1000	30
HE97150LL-4	380/440/660	3	7.5	4.2	150	4	1000	30
HE84150LL-8	380/440/660	3	4	2.3	150	8	1000	30
HE97200LL-8	380/440/660	3	7.5	4.2	200	8	1000	30
HE97300LL-16	380/440/660	3	7.5	4.2	300	16	1000	30
HE70100LL-8-2	380V/230	3	2.2*2	1.5*2	100*2	8*2	1000	30
HE84200LL-8-3	380/440/660	3	4*3	2.3*3	200*3	8*3	1000	30

▼ Control interface:



▼ Hydraulic schematic diagram:

4 point synchronous system hydraulic schematic diagram:



Synchronous Lifting System

▼ Product Renderings:



