

## ▼ PH Series Hydraulic Puller



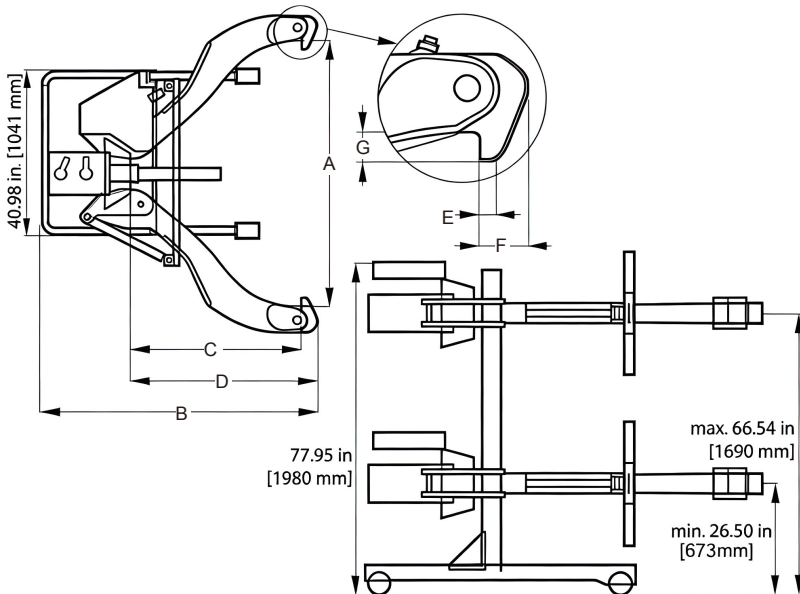
Capacity: 100/200ton

Max. Elongation: 1219mm

Length: 190-1778mm

Maximum working pressure: 70MPa

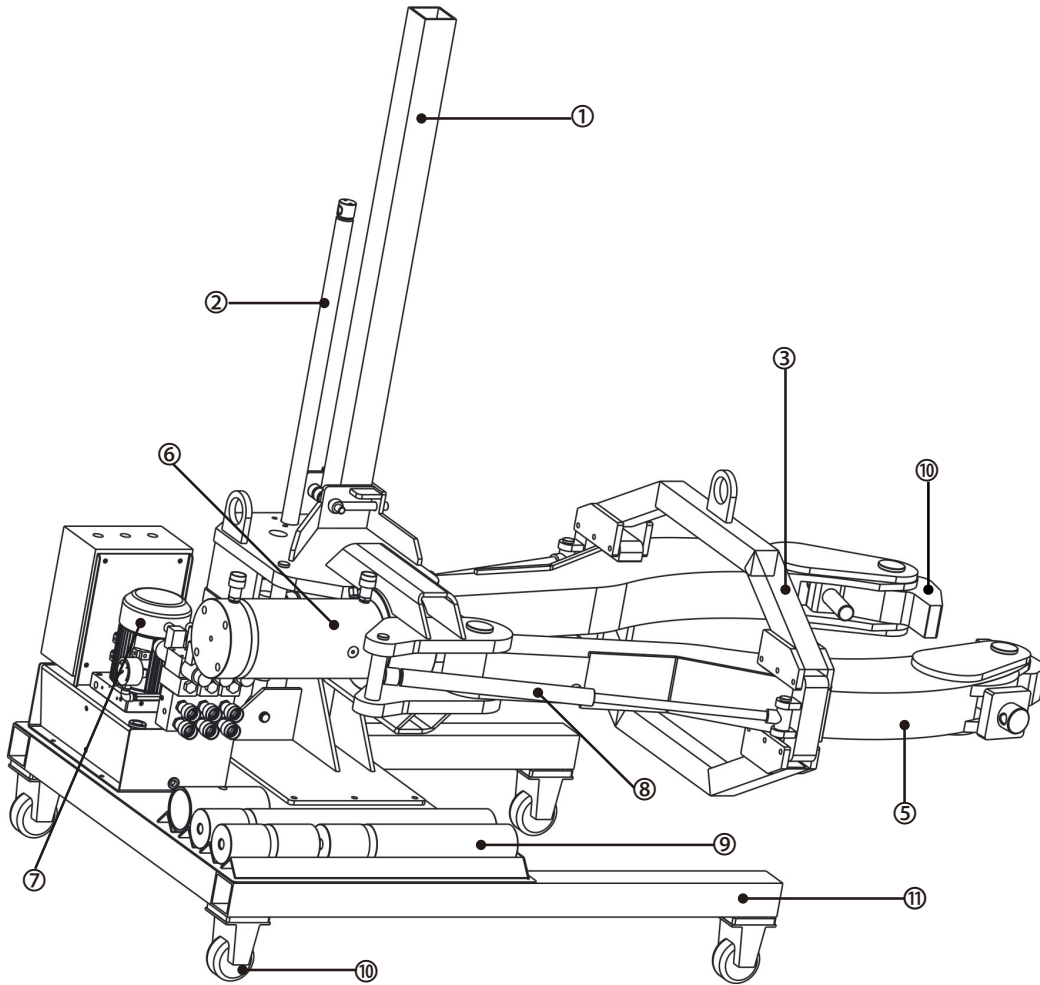
- Motorized lifting roller chassis
- Hydraulic lifting mechanism can raise the puller to 1.7m above ground
- Adjustable jaw structure
- Puller can be quickly removed from the lifting cart
- Equipped with two-stage electric hydraulic pump with remote control, supporting cable-controlled pulling operation
- Working height range of puller: 673mm-1690mm
- Supplied with various special pulling accessories



## ▼ PH Series Puller Specification Table

Model	Pulling Force (ton (kN))	Number of Jaws	Opening Range A (mm)	Overall Length B (mm)	Extension Length C (mm)	Jaw Length D (mm)	Jaw End Width E (mm)	End Clearance F (mm)	End Depth G (mm)	Weight (kg)
PH-102T	100(890)	2	191-1778	1956	1270	1346	32	89	89	771
PH-100T	100(890)	3	191-1778	1956	1270	1346	32	89	89	885
PH-123T	100(890)	3	191-1778	1956	1270	1346	32	89	89	885
PH-200T	200 (1779 )	4	203-1778	1994	1219	1346	32	89	89	1882

## ▼PH-102T Puller Introduction



NO	Name
1	Mast
2	Hoist Cylinder
3	Cage
4	Jaw Tip
5	Jaw
6	Pushing Cylinder
7	Hydraulic Pump
8	Cage Cylinder
9	Pushing Adaptor
10	Casters
11	Base

## ▼PH-102T Outline Dimension Drawing

