

▼ P2282 Ultra-High Pressure Hand Pumps

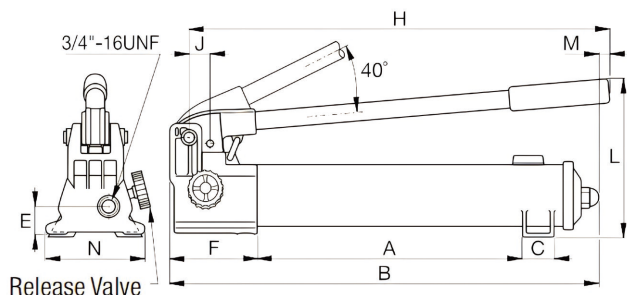


Maximum Pressure: 150/280MPa

Rated Pressure Flow : 0.61 - 2.49 cm³/stroke

Reservoirs capacity: 983cm³

- The two-speed operation mode of P2282 enables faster pressurization, thus shortening cycle times for various testing applications.
- Large release knob for enhanced control over pressure release.
- Equipped with GEJN 116/125 ultra-high pressure connectors as standard, providing higher safety performance.
- Supplied as a complete set, saving assembly time, effectively improving work efficiency and enhancing safety.



▼ P2282 Specification Table

Pump Type	Oil Capacity (cm ³)	Model	Pressure Rating (bar)		Oil Output per Stroke (cm ³)		Max. Handle Force (kg)	Piston Stroke (mm)	Dimensions (mm)												Weight (kg)	
			1st Stage	2nd Stage	1st Stage	2nd Stage			A	B	C	D	E	F	H	J	L	M	N	S		T
Two-Speed Pump	983	P2282	13	2800	16.22	0.61	48.1	25.4	344	558	35	-	31	133	527	29	228	7	120	-	-	6.5

▼ P2282 Quick Selection Table:

Model	Pump	泵压力等级	接头	Pressure Gauge	Gauge Adapter	Pressure Gauge Base (Built-in Safety Valve)	Hydraulic Hose
P2282-1500K		1500bar	 GEJN 116				
P2282-2500K		2500bar	 GEJN 125				