

▼ LPL Low-Height High Tonnage Lock Nut Cylinders



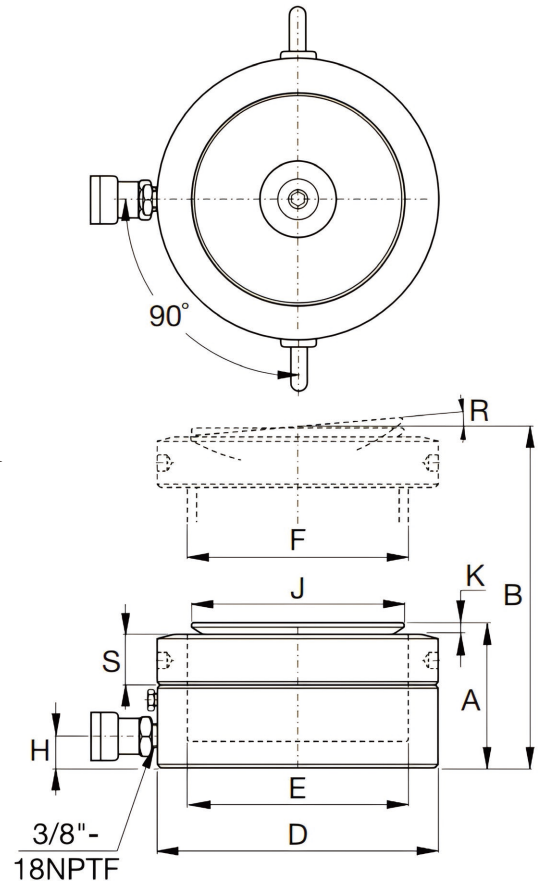
LPL Series

Rated Pressure: 70MPa

Rated Tonnage: 60 -500ton

Stroke Range: 45-50mm

- Locking nut provides mechanical support for the load, ensuring safety.
- Integrated tilting saddle with a maximum inclination angle of 5°.
- Extremely low body height, suitable for narrow installation spaces.
- 5-10% eccentric load resistance capacity.
- Overflow port also serves as a stroke limiter.
- Single-acting, gravity return.
- Gas nitriding and post-oxidation surface treatment process provides superior corrosion resistance and anti-eccentric load performance
- All models come standard with GEJN quick couplings and dust caps.



capacity (ton)	Stroke (mm)	Model	Max. Capacity ton (kN)	Eccentric Load Resistance at Max.Load	Effective Area(cm ²)	Oil Capacity (cm ³)	Body Height A(mm)	Extended Height B(mm)	Outer Diameter D (mm)	Cylinder Bore E(mm)	Plunger Diameter Thread F(mm)	Oil Inlet Height from Bottom H(mm)	Saddle Diameter J(mm)	Saddle Protrusion Height K(mm)	Max. Saddle Tilt Angle R	Lock Nut Height S(mm)	Weight (kg)
60	50	LPL602	62 (606)	10%	86.6	433.0	126	176	140	105	Tr105 x 4	19	96	7	5°	28	15
100	50	LPL1002	102 (1002)	10%	143.1	715.7	137	187	173	135	Tr135 x 6	21	126	8	5°	31	25
150	45	LPL1602	162 (1589)	8%	227.0	1021.4	148	193	220	170	Tr170 x 6	27	160	9	5°	40	43
200	45	LPL2002	202 (1985)	8%	283.5	1275.9	155	200	245	190	Tr190 x 6	30	180	10	5°	43	55
250	45	LPL2502	259 (2541)	5%	363.1	1633.7	159	204	275	215	Tr215 x 6	32	200	12	5°	43	70
400	45	LPL4002	409 (4008)	5%	572.6	2576.5	178	223	350	270	Tr270 x 6	40	250	12	4°	55	129
500	45	LPL5002	522 (5114)	5%	730.6	3287.8	192	237	400	305	Tr305 x 6	49	290	10	3°	61,5	183