

▼ HSTW Intelligent Electric Hydraulic Wrench Pump



Maximum output pressure: 70MPa

Motor power: 1.1/1.5/2.2 KW

Lowflow rate: 7-12 L/min

High flow rate: 0.7-1.5 L/ min

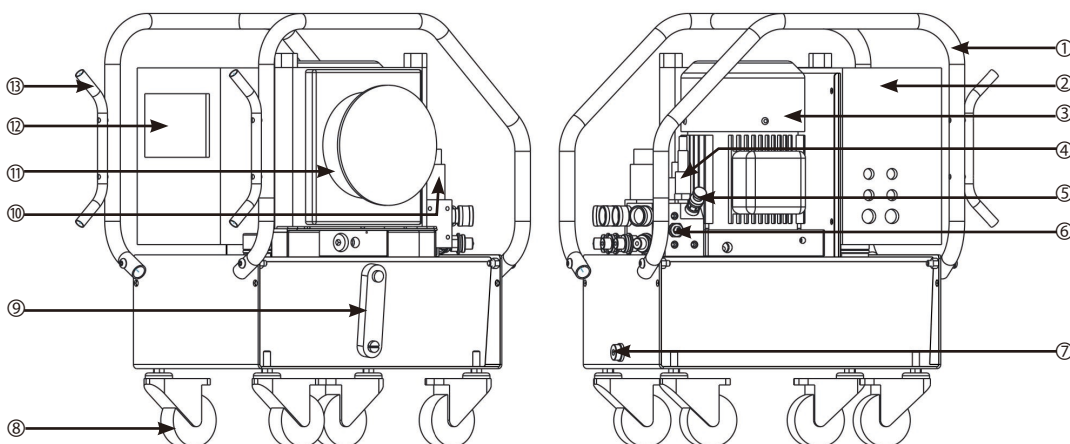
Available oil capacity: 10L

- Brushless motor, noise as low as 75dB
- Aluminum fuel tank with excellent heat dissipation and lightweight design
- Lockable precision pressure regulating valve
- 2/4 Road Distributor
- PLC touch screen: automatic, semi-automatic, manual mode, data storage USB copy
- Integrated protective frame with winding configuration

▼ HSTW Specification Sheet

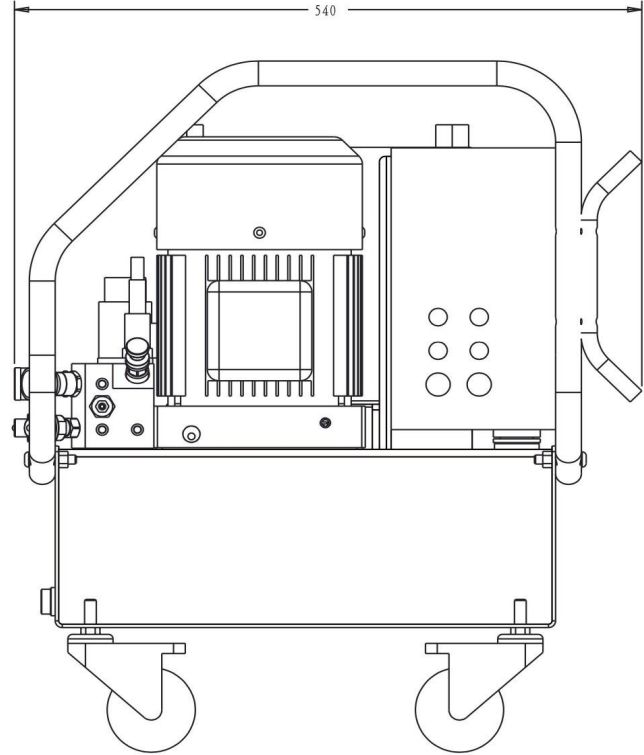
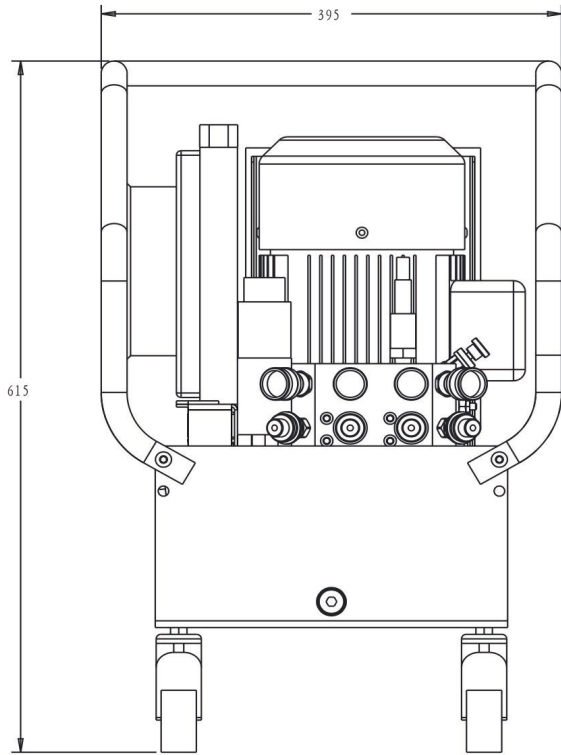
Model	Voltage/ Phases (VAC/ PH)	Available fuel capacity (L)	Motor power (W)	Low flow rate (L/Min)	High flow rate (L/Min)	Weight (KG)
HS4TW-C2	230/1P	10	1100	7	0.7	46.7
HS4TW-C2-115/60	115/1P	10	1100	7	0.7	46.7
HS5TW-C4	230/1P	10	1500	9	1	50
HS5TW-C4-115/60	115/1P	10	1500	9	1	50
HS7TW-C4	380/3P	10	2300	12	1.5	53

▼ HSTW Schematic Diagram

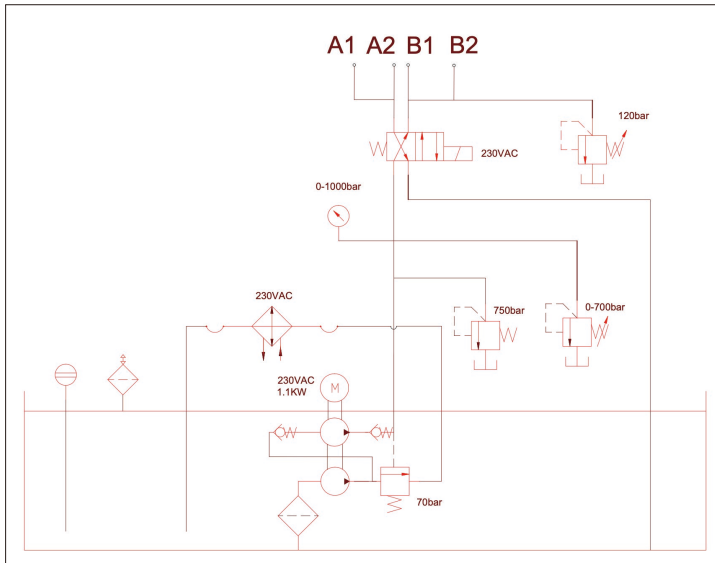


NO	Name
1	Protection Frame
2	Electric Box
3	Motor
4	Pressure Transducer
5	Pressure Regulating Valve
6	Port R Pressure Relief Valve
7	Oil Drain Port
8	Casters
9	Hydraulic Oil Level Gauge
10	Solenoid Directional Valve
11	Air-Cooled Radiator
12	PLC Touch Screen
13	Cable Reel

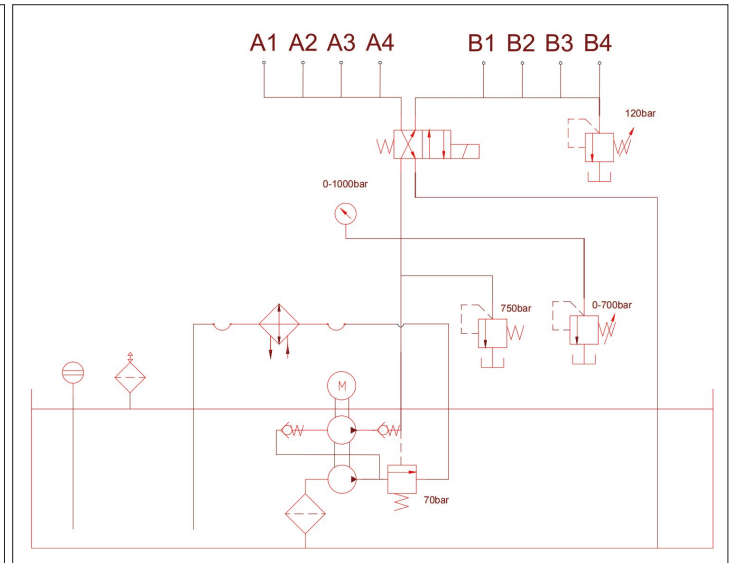
▼ HS5TW-C4 Outline Dimension Drawing



▼ HSTW-C2 Schematic Diagram



▼ HSTW-C4 Schematic Diagram



▼ HSTW Interface Display

▼ HSTW Main Interface Display

It can be operated in automatic, semi-automatic or manual mode, with adjustable pressure and circulation frequency. The device displays status and labels, and features data recording and parameter setting keys.

Intelligent Hydraulic Torque Wrench Pump		2026/01/28 10:36:05	
<input type="button" value="Auto"/> <input checked="" type="button" value="Semi-Auto"/> <input type="button" value="Man"/>			
Semi-Auto Press Calibration	Curr Press	<input type="text" value="0.0"/> MPa	Oper Cd
<input type="text" value="30.9"/> MPa	Curr Press	<input type="text" value="0.0"/> psi	<input type="text" value="01"/>
Auto Press Setting	Torque Val	<input type="text" value="0.0"/> NM	Wrench Cd
<input type="text" value="30.0"/> MPa			<input type="text" value="11"/>
Cycle Cnt Setting			Process Cd
<input type="text" value="5"/>			<input type="text" value="123"/>
Cycle Cnt Recording			
<input type="text" value="5"/>			
		<input type="button" value="Data Rec"/>	<input type="button" value="Para Setting"/>

▼ HSTW Parameter Settings

The parameter settings allow configuration of pressure sensor range, torque conversion, return pressure, minimum return range, semi-automatic pressure holding, and pressurization alarm time parameters with corresponding adjustment ranges. It also displays the cumulative cycle count of the factory, the last and next hydraulic oil change times, and features operation buttons for confirming oiling time and setting clock time.

Press Sensor Range	<input type="text" value="100.0"/> MPa	1-199.9	Sleep Time	<input type="text" value="200.0"/> S
Torque Conv 1MPa=	<input type="text" value="10.0"/> NM	0.1-9999.9	Total Cycles for All-life	<input type="text" value="7"/>
Min retraction Time	<input type="text" value="3.0"/> S	0.1-99.9	Last Hyd Oil Change Time	<input type="text" value="2025"/> <input type="text" value="12"/> <input type="text" value="22"/>
Retractiuon Pressure	<input type="text" value="10.0"/> MPa	5.0-19.9	Next Hyd Oil Change Time	<input type="text" value="2026"/> <input type="text" value="6"/> <input type="text" value="22"/>
Auto Press Comp Value	<input type="text" value="0.3"/> MPa	0.0-10.0		
Semi-Auto Press Hold Time	<input type="text" value="50.0"/> S	0.1-9.9		
Advance Alarm Time	<input type="text" value="30.0"/> S	5-99.9		
Retraction Alarm Time	<input type="text" value="80.0"/> S	1-99.9		
			<input type="button" value="Conf Oil Refuel Time"/>	
			<input type="button" value="Data Rec"/>	<input type="button" value="Main Pg"/>

▼ HSTW Data Record

The data recording interface of the hydraulic wrench pump has a table with information such as date, time, operator, etc. It records operation data (including SEMI/AUTO mode, pressure, torque), and can be used to copy

Date	Time	Operator	Wrench Cd	Process Cct	Press MPa	Mode	-time	Pres-time	To
24/12/25	15:21:20	01	11	1	30.9	SEMI	30.8	308.0	
24/12/25	15:26:39	01	11	1	30	AUTO	30.5	305.0	

USB Drv Detected
USB Copy
Data Clr
Para Setting
Main Page

▼ HSTW Pressure-Flow Diagram

