

▼ HSTW Intelligent Electric Hydraulic Wrench Pump



Maximum output pressure: 70MPa

Power size: 1.1/1.5/2.2KW

Low pressure flow: 7-12L/Min

High pressure flow: 0.7-1.5L/Min

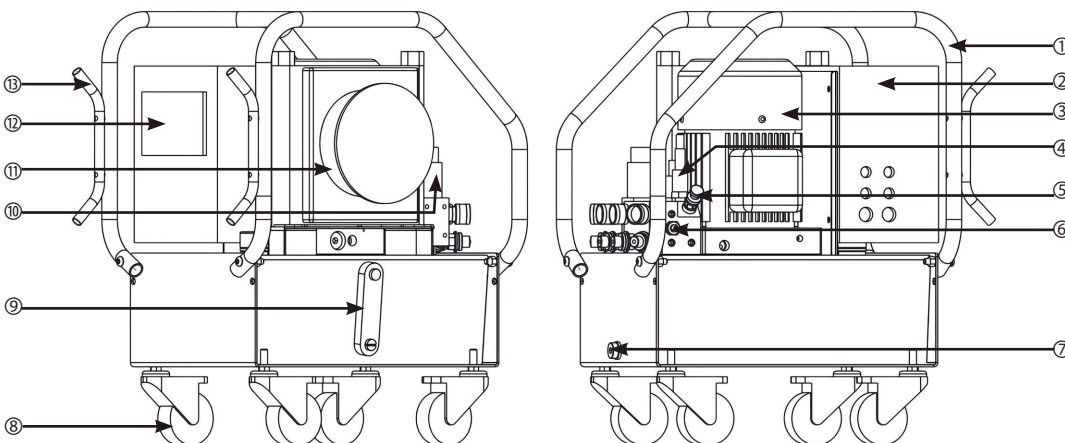
Available oil capacity: 10L

- Brushless motor with noise level as low as 75dB
- Lockable precision pressure regulating valve
- 2/4-way splitter (distributor)
- PLC touch screen: Supports fully automatic, semi-automatic, and manual modes;
- Features data storage and USB copy function
- Integrated protective frame with built-in winding structure

▼ HSTW Product Specifications:

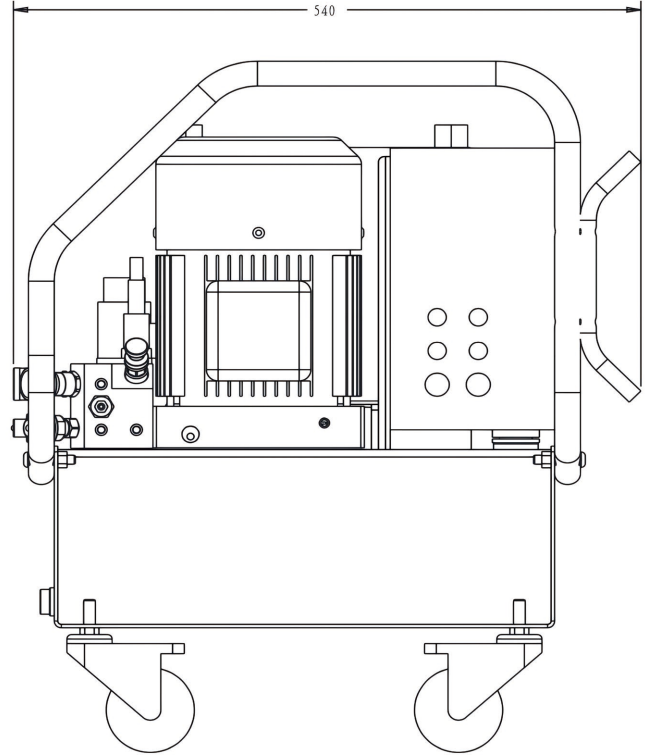
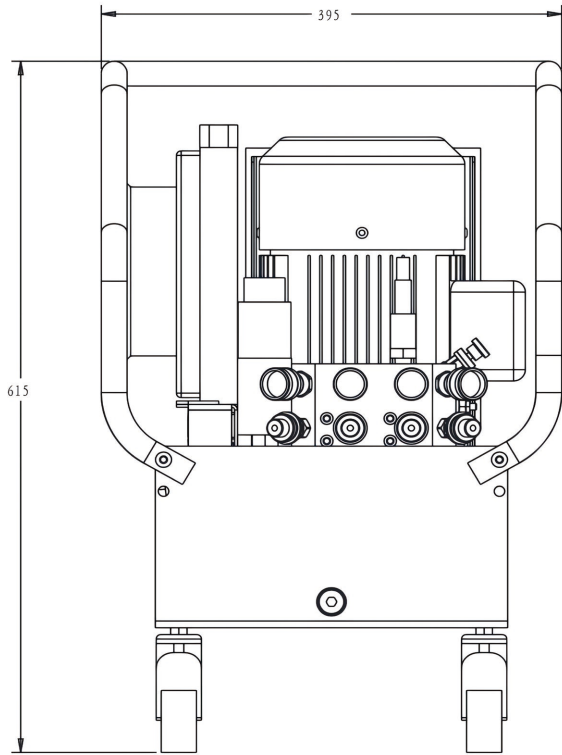
Model	Voltage / Phase (VAC/PH)	Usable Oil Capacity (L)	Motor Power (W)	Low Pressure Flow (L/min)	High Pressure Flow (L/min)	Weight (Without Oil) (kg)
HS4TW-C2	230/1P	10	1100	7	0.7	46.7
HS4TW-C2-115/60	115/1P	10	1100	7	0.7	46.7
HS5TW-C4	230/1P	10	1500	9	1	50
HS5TW-C4-115/60	115/1P	10	1500	9	1	50
HS7TW-C4	380/3P	10	2200	12	1.5	53

▼ HSTW Product illustration:

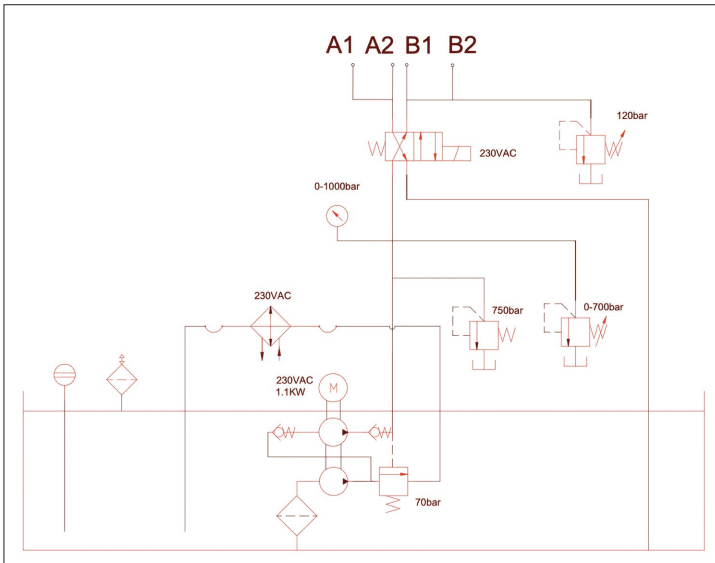


No.	Item Name
1	Protective Frame
2	Electrical Control Box
3	Motor
4	Pressure Sensor
5	Pressure Regulator
6	Port R Pressure Limiting Valve
7	Oil Drain Port
8	Caster
9	Hydraulic Oil Level Gauge
10	Solenoid Directional Valve
11	Air-cooled Radiator
12	PLC Touch Screen
13	Cable Reel

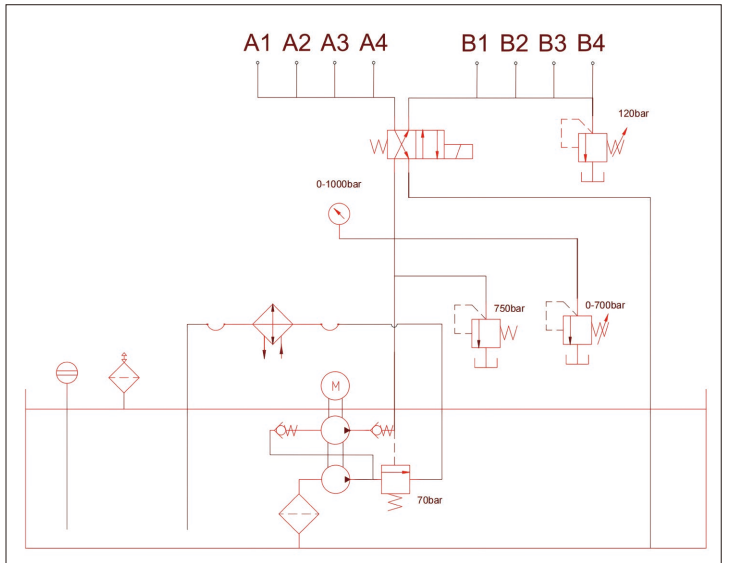
▼ HS5TW-C4 Outline Dimensions



▼ HSTW-C2 Hydraulic Schematic Diagram



▼ HSTW-C4 Hydraulic Schematic Diagram



▼ HSTW Interface Display

▼ HSTW Main Interface Display

It supports automatic, semi-automatic, and manual modes, and allows setting pressure and cycle count. It displays equipment status and indicators, and includes data recording and parameter setting keys.

Intelligent Hydraulic Torque Wrench Pump
2026/01/28 10:36:05

Auto

Semi-Auto

Man

Semi-Auto Press Calibration	Curr Press	0.0	MPa	Oper Cd	01
30.9					
	Curr Press	0.0	psi	Wrench Cd	11
Auto Press Setting					
30.0					
Cycle Cnt Setting	Torque Val	0.0	NM	Process Cd	123
5					
Cycle Cnt Recording					
5					

Data Rec

Para Setting

▼ HSTW Parameter Settings

The parameter settings allow you to configure pressure sensor range, torque conversion, return pressure, minimum return/semi-automatic pressure holding/pressure alarm, and other time parameters and their corresponding adjustment ranges. It also displays the factory cumulative cycle count, the last and next hydraulic oil change times, and includes operation buttons for confirming refueling time and setting the clock time.

Press Sensor Range	100.0	MPa 1-199.9	Sleep Time	200.0	S
Torque Conv 1MPa=	10.0	NM 0.1-9999.9	Total Cycles for All-life	7	
Min retraction Time	3.0	S 0.1-99.9	Last Hyd Oil Change Time	2025	12 22
Retractioun Pressure	10.0	MPa 5.0-19.9	Next Hyd Oil Change Time	2026	6 22
Auto Press Comp Value	0.3	MPa 0.0-10.0	<div style="border: 1px solid black; background-color: orange; padding: 5px; display: inline-block;">Conf Oil Refuel Time</div>		
Semi-Auto Press Hold Time	50.0	S 0.1-9.9			
Advance Alarm Time	30.0	S 5-99.9			
Retraction Alarm Time	80.0	S 1-99.9			

Data Rec

Main Pg

▼ HSTW Data Records

The hydraulic wrench pump's data recording interface displays table columns for date, time, operator, and other information. It records operational data (including SEMI/AUTO mode, pressure, and torque), and allows users to copy data to a USB flash drive and clear data for data management.

Date	Time	Operator	Wrench Cd	Process Cct	Press MP	Mode	-time Pres	-time To
24/12/25	15:21:20	01	11	1	30.9	SEMI	30.8	308.0
24/12/25	15:26:39	01	11	1	30	AUTO	30.5	305.0

USB Drv Detected
USB Copy
Data Clr
Para Setting
Main Page

▼ HSTW Pressure-Flow Diagram

