

▼ HSE700AT Servo Intelligent Pressure Pumps



Maximum output pressure: 70MPa

Motor size: 1KW/1.5KW

Low pressure flow: 5/6.4L/Min

High pressure flow: 0.6/0.85L/Min

Reservoirs capacity: 20/60L

- Configure PLC touch screen, built-in automatic pressure control program
- Set the target pressure after one key start, pressure automatic maintenance
- pressure holding accuracy can be set, 0.3-5MPa Control accuracy
- Real-time recording of pressure-time curve
- External adjustable pressure limiting valve
- With boost pressure timeout alarm and sensor signal alarm function
- Display unit MPa/BAR/psi/KN can be switched
- Equipped with liquid level sensor, with oil temperature level alarm function

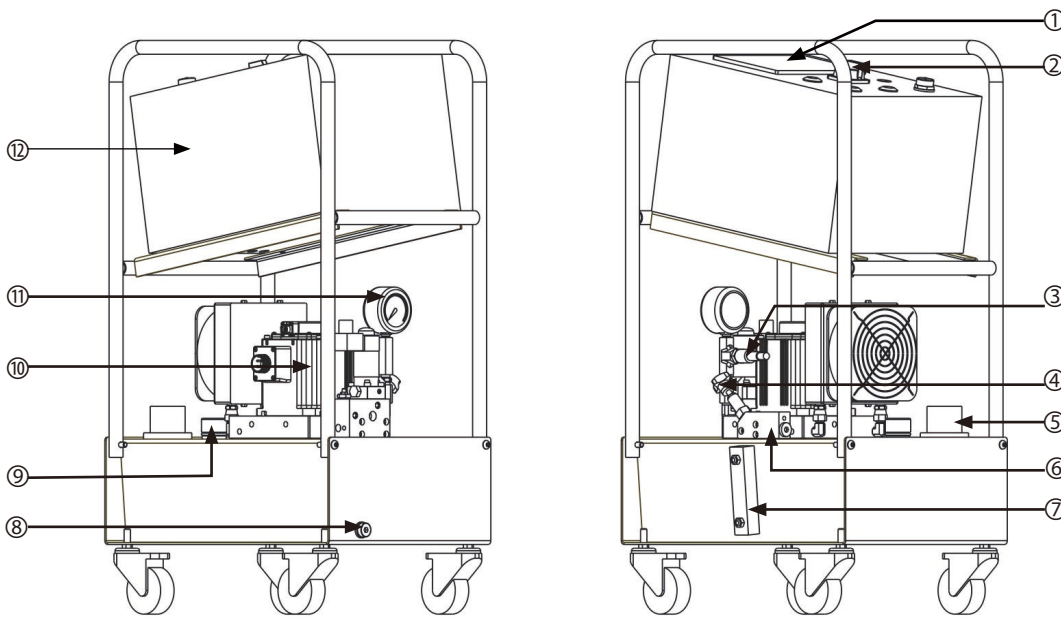
▼ Main interface display:



▼ HSE Series Type Specification Sheet:

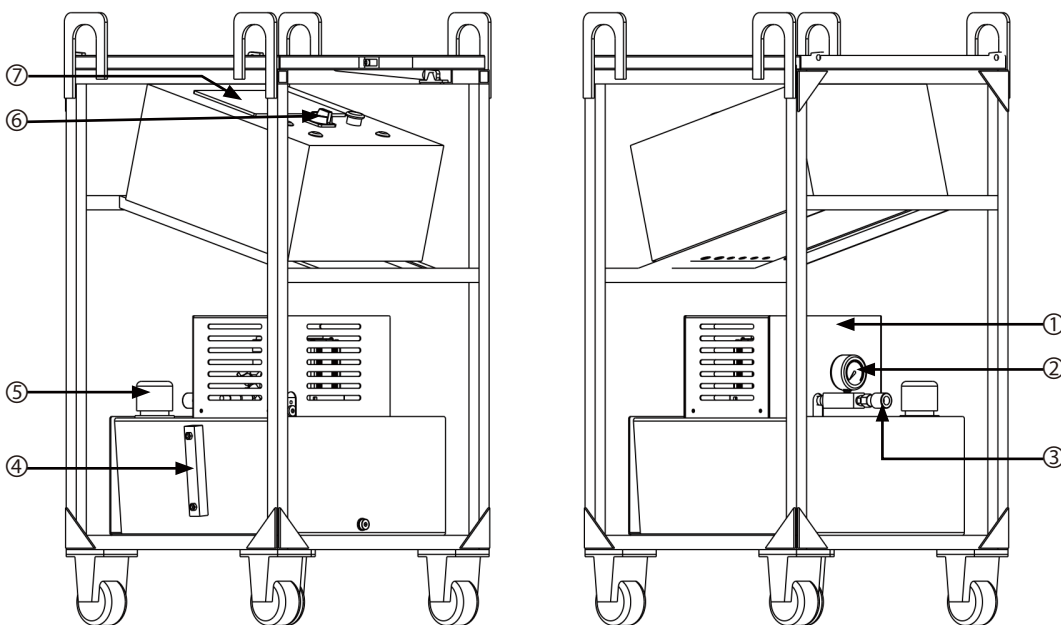
Model Number	Voltage	Motor Size	High Pressure Flow	Low Pressure Flow	Reservoirs capacity	Touch screen size	Weight without oil
HSE700AT20	230VAC	1KW	0.6L/Min	5L/Min	20L	7inches	53KG
HSE700AT60	230VAC	1.5KW	0.85L/Min	6.4L/min	60L	10inches	123KG

▼ HSE700AT20 Product Illustration:



NO	Name
1	PLC touch screen
2	Mains switch
3	Pressure Transducer
4	Relief Valve
5	Level And Temperature Transducer
6	Pilot relief valve block
7	Sight Glass
8	Oil Drain
9	Refueling And Exhaust Outlet
10	Motor
11	Gauge
12	Electric Box

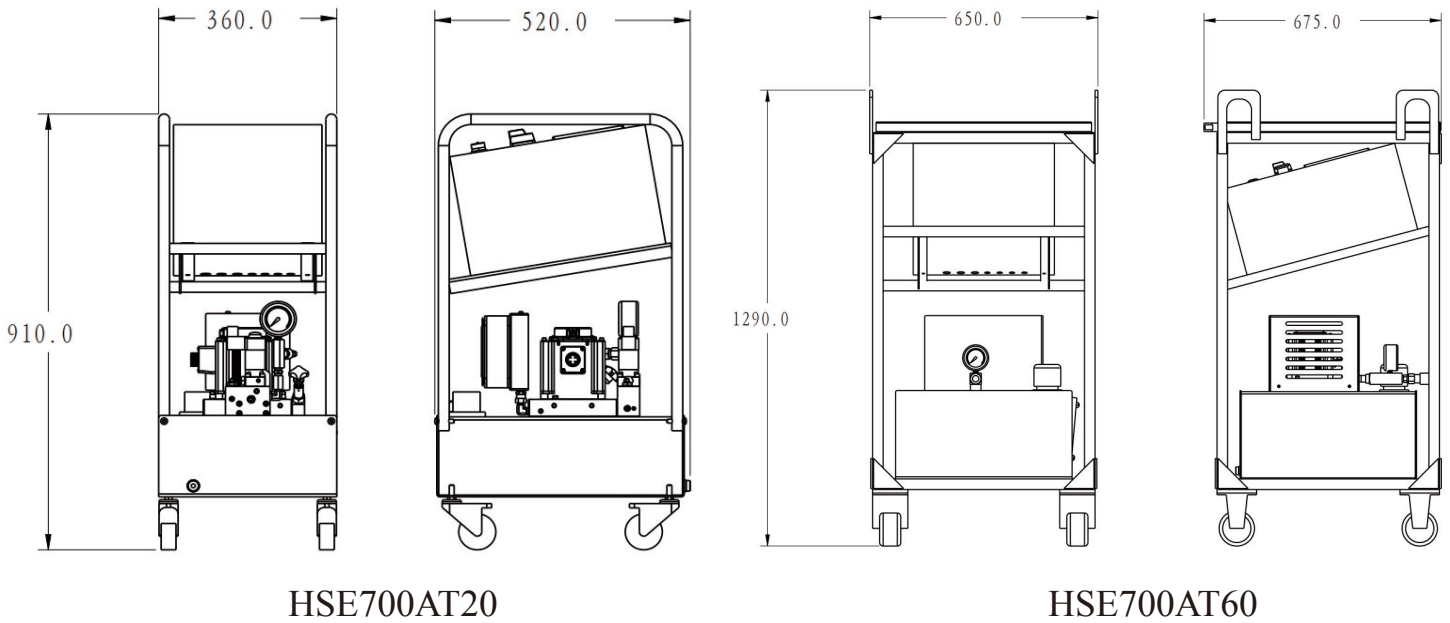
▼ HSE700AT60 Product Illustration:



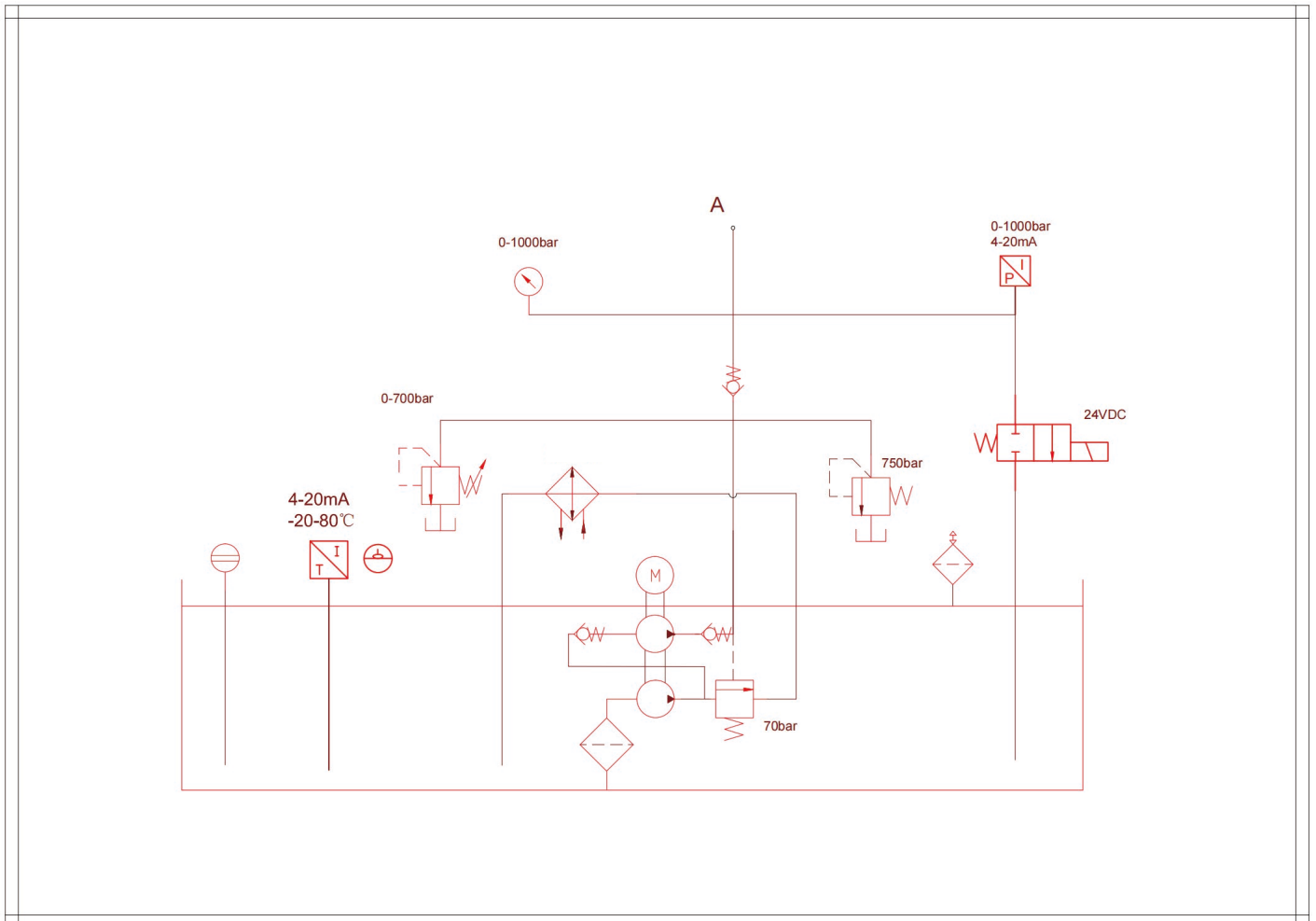
NO	Name
1	Shield
2	Gauge
3	Couplers
4	Sight Glass
5	Refueling And Exhaust Outlet
6	Mains switch
7	PLC touch screen

♦ The guard is equipped with servo motor, solenoid valve, pressure sensor and external safety valve.

▼ HSE series Outline Dimensional Drawing:



▼ HSE series Hydraulic Schematic Diagram:



▼ HSE Hydraulic Schematic Diagram:

