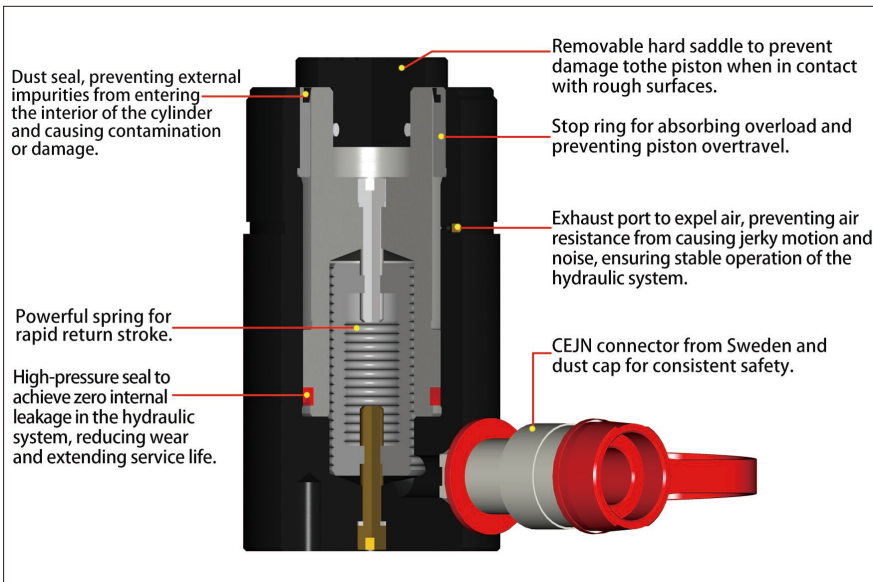


▼ HRC Universal Single-Acting Cylinders



- Reinforced-design stop ring enhances durability and anti-eccentric load capacity
- High-tonnage cylinders are equipped with certified G80 high-strength lifting eyes
- All models are equipped with base mounting holes
- Pre-tensioned spring system enables faster retraction speed
- High-grade polyurethane seals are adopted, featuring excellent sealing performance, wear resistance, and a long service life
- Plunger dust seals can reduce contamination issues and prolong the service life of hydraulic cylinders
- Preset outer ring threads, plunger threads, and base mounting holes simplify connection and installation
- Suitable for all installation positions and orientations
- Equipped with a breather port for smooth extension and fast retraction
- Gas nitriding and post-oxidation surface treatment process provides superior corrosion resistance and anti-eccentric load performance

▼ HRC Performance Introduction:



Rated Pressure: 70MPa

Rated Tonnage: 5-95ton

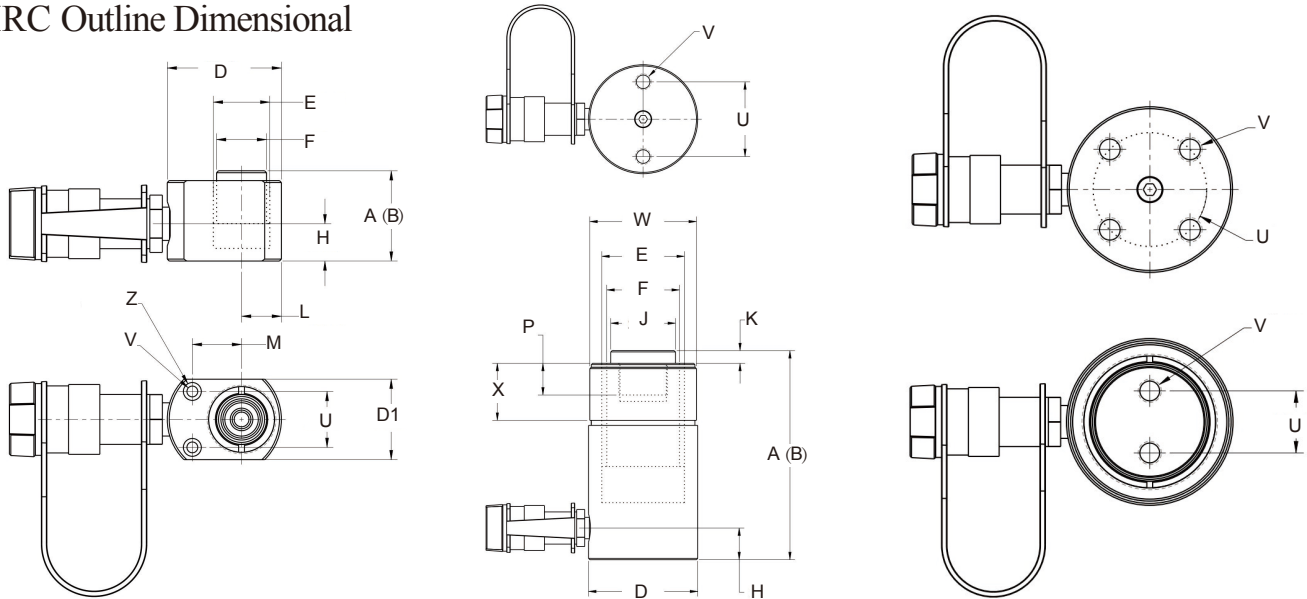
Stroke Range: 16-362mm

► Note:

- HRC50 cylinder has a non-removable grooved saddle and no collar thread.
- RC50: D1 = 41 mm, L = 20 mm, M = 25 mm.
- RC101 has plunger with two thread holes and non-removable saddle.

Capacity (ton (kN))	Stroke (mm)	Model Number	Cylinder Effective Area (cm ²)	Oil Capacity (cm ³)	Collapsed Height A (mm)	Extended Height B (mm)
5 (45)	16	HRC50	6.4	10	41	57
	25	HRC51	6.4	16	110	135
	79	HRC53	6.4	50	165	244
	127	HRC55	6.4	83	216	343
	177	HRC57	6.4	115	273	450
	232	HRC59	6.4	151	324	556
10 (101)	26	HRC101	14.4	38	90	116
	54	HRC102	14.4	78	121	175
	105	HRC104	14.4	152	171	276
	156	HRC106	14.4	226	248	404
	203	HRC108	14.4	294	298	501
	257	HRC1010	14.4	373	349	606
	304	HRC1012	14.4	441	400	704
	356	HRC1014	14.4	516	451	807
15 (142)	25	HRC151	20.3	51	124	149
	51	HRC152	20.3	104	149	200
	101	HRC154	20.3	205	200	301
	152	HRC156	20.3	308	271	423
	203	HRC158	20.3	411	322	525
	254	HRC1510	20.3	516	373	627
	305	HRC1512	20.3	619	424	729
	356	HRC1514	20.3	723	475	831
25 (232)	26	HRC251	33.3	86	140	166
	50	HRC252	33.3	166	165	215
	102	HRC254	33.3	339	216	318
	158	HRC256	33.3	525	273	431
	210	HRC258	33.3	697	324	534
	261	HRC2510	33.3	867	375	636
	311	HRC2512	33.3	1033	425	736
	362	HRC2514	33.3	1202	476	838
30 (295)	209	HRC308	42.9	880	387	596
50 (498)	51	HRC502	71.3	362	176	227
	101	HRC504	71.3	719	227	328
	159	HRC506	71.3	1131	283	442
	260	HRC5010	71.3	1855	384	644
	337	HRC5013	71.3	2399	460	797
75 (718)	156	HRC756	102.6	1601	286	442
	333	HRC7513	102.6	3417	492	825
95 (933)	51	HRC1002	133.1	676	219	270
	168	HRC1006	133.1	2239	357	525
	260	HRC10010	133.1	3466	449	709

▼ HRC Outline Dimensional



Outside Dia. D (mm)	Bore Dia. E (mm)	Plunger Dia. F (mm)	Base to Adv. Port H (mm)	Saddle Dia. J (mm)	Saddle Prot. from Plgr. K (mm)	Plunger Internal Thread O	Plunger Thread Length P (mm)	Steel Base Plate Mounting Holes			Base Mounting Holes - Thread W	Collar Thread Length X (mm)	Weight (KG)	Model Number
								Bolt Circle U(mm)	Thread V(mm)	Thread Depth Y(mm)				
58 ³⁾	28.6	25.4	19	—	—	—	—	29	5.6 mm	—	—	—	1	HRC50
38	28.6	25.4	19	25	6	3/4" - 16 UN	14	25	1/4" - 20 UNC	14	1/2" - 16 UN	28	1	HRC51
38	28.6	25.4	19	25	6	3/4" - 16 UN	14	25	1/4" - 20 UNC	14	1/2" - 16 UN	28	1.5	HRC53
38	28.6	25.4	19	25	6	3/4" - 16 UN	14	25	1/4" - 20 UNC	14	1/2" - 16 UN	28	1.9	HRC55
38	28.6	25.4	19	25	6	3/4" - 16 UN	16	25	1/4" - 20 UNC	14	1/2" - 16 UN	28	2.4	HRC57
38	28.6	25.4	19	25	6	3/4" - 16 UN	16	25	1/4" - 20 UNC	14	1/2" - 16 UN	28	2.8	HRC59
57	42.8	38.1	19	—	—	#10 - 24 UN	6	40	5/16" - 18 UNC	12	2/4" - 14 UN	27	1.8	HRC101
57	42.8	38.1	19	35	6	1" - 8 UN	19	40	5/16" - 18 UNC	12	2/4" - 14 UN	27	2.3	HRC102
57	42.8	38.1	19	35	6	1" - 8 UN	19	40	5/16" - 18 UNC	12	2/4" - 14 UN	27	3.3	HRC104
57	42.8	38.1	19	35	6	1" - 8 UN	19	40	5/16" - 18 UNC	12	2/4" - 14 UN	27	4.4	HRC106
57	42.8	38.1	19	35	6	1" - 8 UN	19	40	5/16" - 18 UNC	12	2/4" - 14 UN	27	5.4	HRC108
57	42.8	38.1	19	35	6	1" - 8 UN	19	40	5/16" - 18 UNC	12	2/4" - 14 UN	27	6.4	HRC1010
57	42.8	38.1	19	35	6	1" - 8 UN	19	40	5/16" - 18 UNC	12	2/4" - 14 UN	27	6.8	HRC1012
57	42.8	38.1	19	35	6	1" - 8 UN	19	40	5/16" - 18 UNC	12	2/4" - 14 UN	27	8.2	HRC1014
70	50.8	41.3	19	38	9	1" - 8 UN	25	48	3/8" - 16 UNC	12	2/4" - 16 UN	30	3.3	HRC151
70	50.8	41.3	19	38	9	1" - 8 UN	25	48	3/8" - 16 UNC	12	2/4" - 16 UN	30	4.1	HRC152
70	50.8	41.3	19	38	9	1" - 8 UN	25	48	3/8" - 16 UNC	12	2/4" - 16 UN	30	5	HRC154
70	50.8	41.3	25	38	9	1" - 8 UN	25	48	3/8" - 16 UNC	12	2/4" - 16 UN	30	6.8	HRC156
70	50.8	41.3	25	38	9	1" - 8 UN	25	48	3/8" - 16 UNC	12	2/4" - 16 UN	30	8.2	HRC158
70	50.8	41.3	25	38	9	1" - 8 UN	25	48	3/8" - 16 UNC	12	2/4" - 16 UN	30	9.5	HRC1510
70	50.8	41.3	25	38	9	1" - 8 UN	25	48	3/8" - 16 UNC	12	2/4" - 16 UN	30	10.9	HRC1512
70	50.8	41.3	25	38	9	1" - 8 UN	25	48	3/8" - 16 UNC	12	2/4" - 16 UN	30	11.8	HRC1514
86	65.1	57.2	25	51	10	1 1/2" - 16 UN	25	59	1/2" - 13 UNC	19	3 5/16" - 12 UN	49	5.9	HRC251
86	65.1	57.2	25	51	10	1 1/2" - 16 UN	25	59	1/2" - 13 UNC	19	3 5/16" - 12 UN	49	6.4	HRC252
86	65.1	57.2	25	51	10	1 1/2" - 16 UN	25	59	1/2" - 13 UNC	19	3 5/16" - 12 UN	49	8.2	HRC254
86	65.1	57.2	25	51	10	1 1/2" - 16 UN	25	59	1/2" - 13 UNC	19	3 5/16" - 12 UN	49	10	HRC256
86	65.1	57.2	25	51	10	1 1/2" - 16 UN	25	59	1/2" - 13 UNC	19	3 5/16" - 12 UN	49	12.2	HRC258
86	65.1	57.2	25	51	10	1 1/2" - 16 UN	25	59	1/2" - 13 UNC	19	3 5/16" - 12 UN	49	14.1	HRC2510
86	65.1	57.2	25	51	10	1 1/2" - 16 UN	25	59	1/2" - 13 UNC	19	3 5/16" - 12 UN	49	16.3	HRC2512
86	65.1	57.2	25	51	10	1 1/2" - 16 UN	25	59	1/2" - 13 UNC	19	3 5/16" - 12 UN	49	17.7	HRC2514
102	73	57.2	29	51	10	1 1/2" - 16 UN	25	59	1/2" - 13 UNC	16	3 5/16" - 12 UN	49	18.1	HRC308
127	95.2	79.4	33	71	2	—	—	95	1/2" - 13 UNC	19	5" - 12 UN	55	15	HRC502
127	95.2	79.4	33	71	2	—	—	95	1/2" - 13 UNC	19	5" - 12 UN	55	19.1	HRC504
127	95.2	79.4	35	71	2	—	—	95	1/2" - 13 UNC	19	5" - 12 UN	55	23.1	HRC506
127	95.2	79.4	35	71	2	—	—	95	1/2" - 13 UNC	19	5" - 12 UN	55	31.8	HRC5010
127	95.2	79.4	35	71	2	—	—	95	1/2" - 13 UNC	19	5" - 12 UN	55	37.6	HRC5013
146	114.3	95.3	30	71	2	—	—	114	3/8" - 13 UNC	16	5 3/4" - 12 UN	44	29.5	HRC756
146	114.3	95.3	30	71	2	—	—	114	3/8" - 13 UNC	16	5 3/4" - 12 UN	44	59	HRC7513
178	130.2	104.8	41	71	2	—	—	140	3/4" - 10 UNC	25	6 7/8" - 12 UN	44	36.7	HRC1002
178	130.2	104.8	41	71	2	—	—	140	3/4" - 10 UNC	25	6 7/8" - 12 UN	44	59	HRC1006
178	130.2	104.8	41	71	2	—	—	140	3/4" - 10 UNC	25	6 7/8" - 12 UN	44	72.6	HRC10010