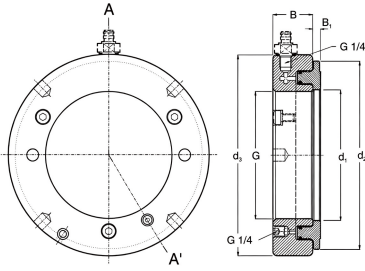


▼HMV Mounting or Dismounting of Bearings



- Facilitates easy and quick application of the high drive-up forces required for mounting bearings on tapered seatings.
- The hydraulic nut can also be used for dismounting bearings mounted on either adapter or withdrawal sleeves.
- Quick connection coupling can be fitted on the face or side of the nut
- A spare set of piston seals and maintenance kit is included
- Supplied with a quick connection coupling to fit the RIVERLAKE hydraulic pumps
- Equipped with eyebolts, two tommy bars and four mating holes on their front face

Model	Thread	d1 (MM)	d2 (MM)	d3 (MM)	B (MM)	B1 (MM)	Stroke (MM)	Piston Area (mm ²)	weight (KG)
HMV10E	M50x1.5	50.5	104	114	38	4	5	2900	2.70
HMV11E	M55x2	55.5	109	120	38	4	5	3150	2.75
HMV12E	M60x2	60.5	115	125	38	5	5	3300	2.80
HMV13E	M65x2	65.5	121	130	38	5	5	3600	3.00
HMV14E	M70x2	70.5	127	135	38	5	5	3800	3.20
HMV15E	M75x2	75.5	132	140	38	5	5	4000	3.40
HMV16E	M80x2	80.5	137	146	38	5	5	4200	3.70
HMV17E	M85x2	85.5	142	150	38	5	5	4400	3.75
HMV18E	M 90x2	90.5	147	156	38	5	5	4700	4.00
HMV19E	M95x2	95.5	153	162	38	5	5	4900	4.30
HMV 20E	M100x2	100.5	158	166	38	6	5	5100	4.40
HMV 21E	M105x2	105.5	163	172	38	6	5	5300	4.65
HMV 22E	M110x2	110.5	169	178	38	6	5	5600	4.95
HMV 23E	M115x2	115.5	174	182	38	6	5	5800	5.00
HMV 24E	M120x2	120.5	179	188	38	6	5	6000	5.25
HMV 25E	M125x2	125.5	184	192	38	6	5	6200	5.35
HMV 26E	M130x2	130.5	190	198	38	6	5	6400	5.65
HMV27E	M135x2	135.5	195	204	38	6	5	6600	5.90
HMV 28E	M140x2	140.5	200	208	38	7	5	6800	6.00
HMV 29E	M145x2	145.5	206	214	39	7	5	7300	6.50
HMV30E	M150x2	150.5	211	220	39	7	5	7500	6.60
HMV31E	M155x3	155.5	218	226	39	7	5	8100	6.95
HMV32E	M160x3	160.5	224	232	40	7	6	8600	7.60
HMV33E	M165x3	165.5	229	238	40	7	6	8900	7.90
HMV34E	M170x3	170.5	235	244	41	7	6	9400	8.40
HMV36E	M180x3	180.5	247	256	41	7	6	10300	9.15
HMV38E	M190x3	191	259	270	42	8	7	11500	10.5
HMV40E	M 200x3	201	271	282	43	8	8	12500	11.5
HMV41E	Tr 205x4	207	276	288	43	8	8	12800	12.0
HMV42E	Tr 210x4	212	282	294	44	8	9	13400	12.5
HMV43E	Tr 215x4	217	287	300	44	8	9	13700	13.0
HMV44E	Tr 220x4	222	293	306	44	8	9	14400	13.5
HMV45E	Tr 225x4	227	300	312	45	8	9	15200	14.5
HMV46E	Tr 230x4	232	305	318	45	8	9	15500	14.5
HMV47E	Tr 235x4	237	311	326	46	8	10	16200	16.0



Model	Thread	d1 (MM)	d2 (MM)	d3 (MM)	B (MM)	B1 (MM)	Stroke (MM)	Piston Area (mm ²)	weight (KG)
HMV48E	Tr 240x4	242	316	330	46	9	10	16500	16.0
HMV50E	Tr 250x4	252	329	342	46	6	10	17600	17.5
HMV52E	Tr 260x4	262	341	356	47	6	11	18800	19.5
HMV54E	Tr 270x4	272	352	368	48	9	12	19800	20.5
HMV56E	Tr 280x4	282	363	380	49	6	12	21100	22.0
HMV58E	Tr 290x4	292	375	390	49	9	13	22400	22.5
HMV60E	Tr 300x4	302	386	404	51	10	14	23600	25.5
HMV62E	Tr 310x5	312	397	416	52	10	14	24900	27.0
HMV64E	Tr 320x5	322	409	428	53	10	14	26300	29.5
HMV66E	Tr 330x5	332	419	438	53	10	14	27000	30.0
HMV 68E	Tr340x5	342	430	450	54	10	14	28400	31.5
HMV69E	Tr 345x5	347	436	456	54	10	14	29400	32.5
HMV 70E	Tr350x5	352	442	464	56	10	14	29900	35.0
HMV 72E	Tr 360x5	362	455	472	56	10	15	31300	35.5
HMV 73E	Tr365x5	367	460	482	57	11	15	31700	38.5
HMV 74E	Tr 370x5	372	466	486	57	11	16	32800	39.0
HMV 76E	Tr 380x5	382	476	498	58	11	16	33500	40.5
HMV 77E	Tr 385x5	387	483	504	58	11	16	34700	41.0
HMV 80E	Tr 400x5	402	499	522	60	11	17	36700	45.5
HMV 82E	Tr 410x5	412	510	534	61	11	17	38300	48.0
HMV 84E	Tr 420x5	422	522	546	61	11	17	40000	50.0
HMV 86E	Tr 430x5	432	532	556	62	11	17	40800	52.5
HMV 88E	Tr 440x5	442	543	566	62	12	17	42500	54.0
HMV 90E	Tr 450x5	452	554	580	64	12	17	44100	57.5
HMV 92E	Tr 460x5	462	565	590	64	12	17	45100	60.0
HMV 94E	Tr 470x5	472	576	602	65	12	18	46900	62.0
HMV96E	Tr 480x5	482	587	612	65	12	19	48600	63.0
HMV 98E	Tr 490x5	492	597	624	66	12	19	49500	66.0
HMV 100E	Tr 500x5	502	609	636	67	12	19	51500	70.0
HMV 102E	Tr510x6	512	624	648	68	12	20	53300	74.0
HMV 104E	Tr 520x6	522	634	658	68	13	20	54300	75.0
HMV 106E	Tr 530x6	532	645	670	69	13	21	56200	79.0
HMV 108E	Tr540x6	542	657	682	69	13	21	58200	81.0
HMV 110E	Tr 550x6	552	667	693	70	13	21	59200	84.0
HMV 112E	Tr 560x6	562	678	704	71	13	22	61200	88.0
HMV 114E	Tr 570x6	572	689	716	72	13	23	63200	91.0
HMV 116E	Tr 580x6	582	699	726	72	13	23	64200	94.0
HMV 120E	Tr 600x6	602	721	748	73	13	23	67300	100
HMV 126E	Tr 630x6	632	754	782	74	14	23	72900	110
HMV 130E	Tr650x6	652	775	804	75	14	23	76200	115
HMV 134E	Tr670x6	672	796	826	76	14	24	79500	120
HMV 138E	Tr690x6	692	819	848	77	14	25	84200	127
HMV 142E	Tr 710x7	712	840	870	78	15	25	87700	135
HMV 150E	Tr750x7	752	883	912	79	15	25	95200	146
HMV160E	Tr 800x7	802	936	965	80	16	25	103900	161
HMV 170E	Tr850x7	852	990	1020	83	16	26	114600	181
HMV 180E	Tr900x7	902	1043	1075	86	17	30	124100	205
HMV 190E	Tr950x8	952	1097	1126	86	17	30	135700	218
HMV 200E	Tr 1000x8	1002	1150	1180	88	17	34	145800	239