

## ▼ HGTW 3-Stage Electric Wrench Pumps



Maximum output pressure: 70MPa

Motor size: 1.1/1.5KW

Low pressure flow: 6/8.5L/Min

Medium pressure flow: 1.5/2L/Min

High pressure flow: 0.7/1L/Min

- Brushless motor, maintenance-free and low noise.
- Integrated frame with built-in hose reel for easy control cable storage.
- Quick-release pressure gauge without rotation.
- Standard with 2 or 4 outlets, capable of driving multiple hydraulic wrenches simultaneously.
- Equipped with electromagnetic automatic air vent valve, which automatically opens for air intake and exhaust when powered on.
- Equipped with high-efficiency air-cooled radiator.
- Optional R2/R4 digital display handles are available, which monitor real-time pressure.
- Aluminum oil tank, lightweight with excellent heat dissipation.

## ▼ HGTW Type Specification Sheet:

Model Number	Voltage (VAC/HZ)	Motor size (KW)	Low Pressure Flow (L/Min)	Medium Pressure Flow (L/Min)	High Pressure Flow (L/Min)	Reservoirs Capacity (L)	Weight without oil (KG)
HG4TW-C2	230/50	1.1	6	1.5	0.7	7	30
HG4TW-C2-115/60	115/60	1.1	6.5	1.5	0.7	7	30
HG5TW-C2	230/50	1.5	8	2	1	7	33
HG5TW-C2-115/60	115/60	1.5	8.5	2	1	7	33
HG5TW-C4	230/50	1.5	8	2	1	7	36
HG5TW-C4-115/60	115/60	1.5	8.5	2	1	7	36
HG4TW-R2	230/50	1.1	6	1.5	0.7	7	30
HG4TW-R2-115/60	115/60	1.1	6.5	1.5	0.7	7	30
HG5TW-R2	230/50	1.5	8	2	1	7	33
HG5TW-R2-115/60	115/60	1.5	8.5	2	1	7	33
HG5TW-R4	230/50	1.5	8	2	1	7	36
HG5TW-R4-115/60	115/60	1.5	8.5	2	1	7	36

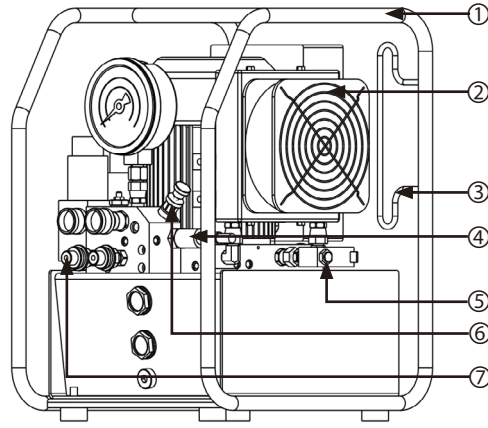
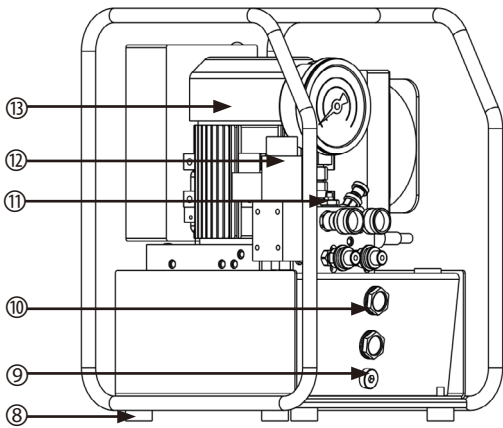


HG5TW-C4



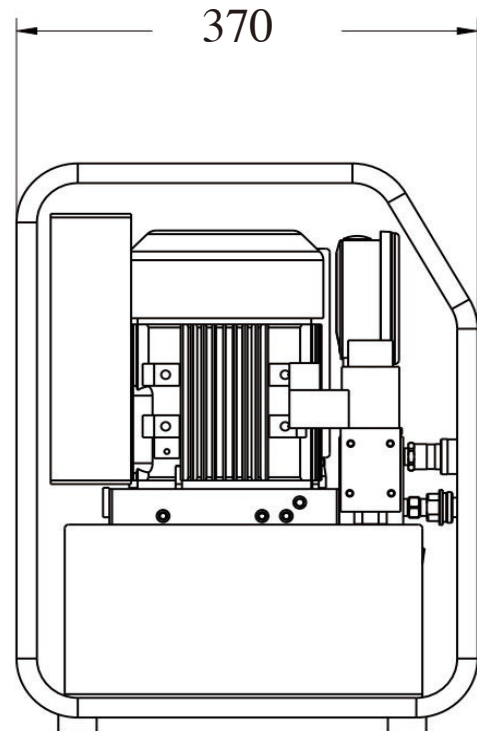
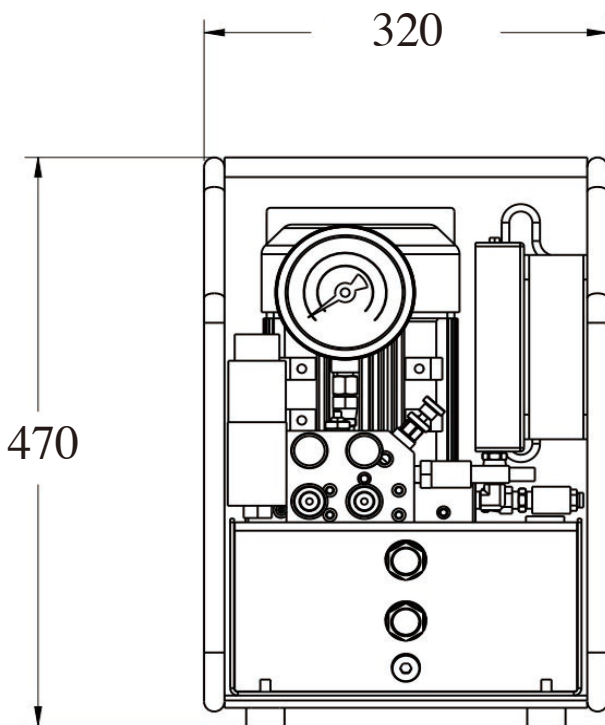
HG5TW-R2

▼ HGTW Product Illustration :

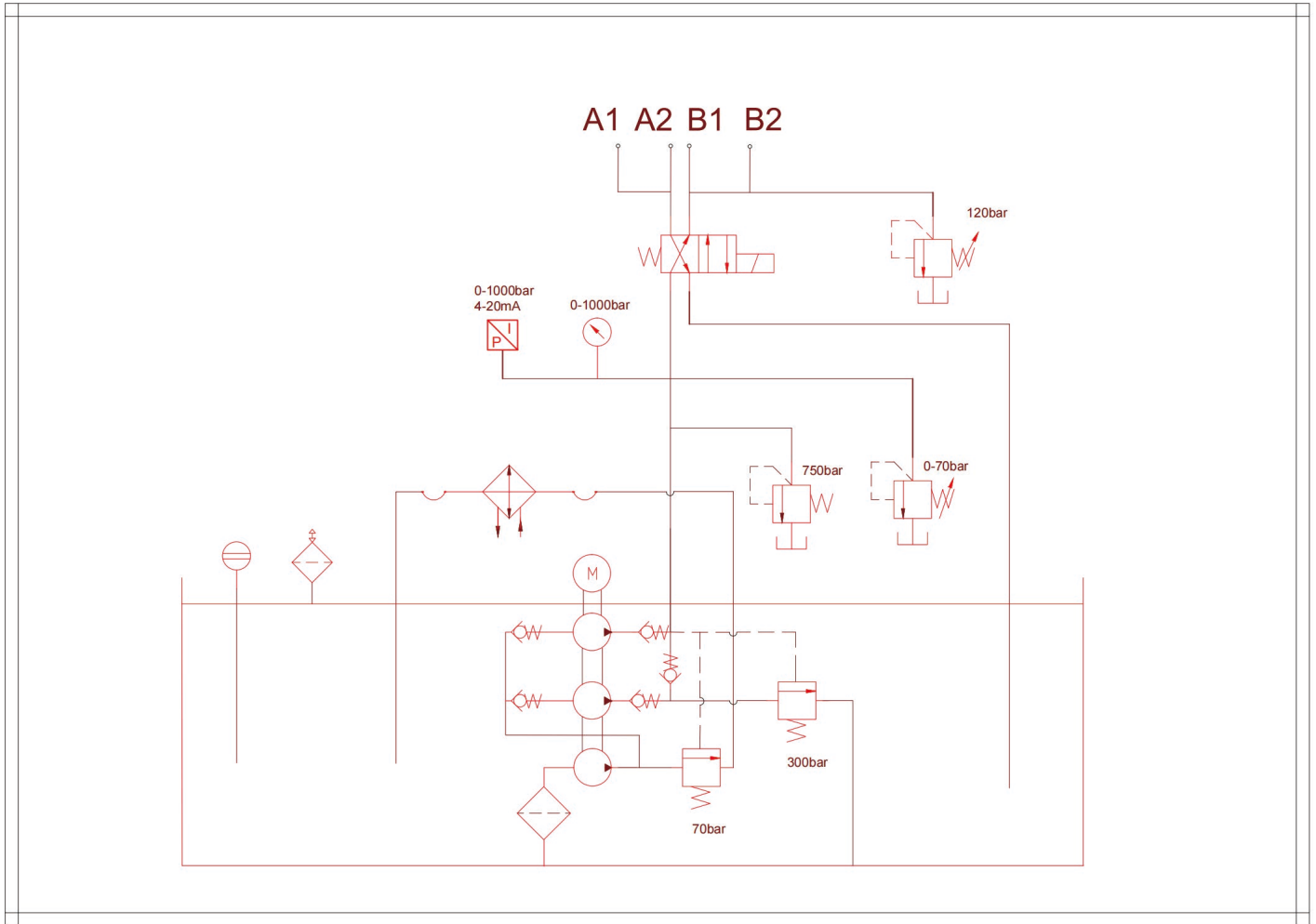


No	Name
1	Protected Framework
2	Heat Exchanger
3	Cable Collector
4	Pressure Transducer
5	Solenoid Exhaust Valve
6	Relief Valve
7	Couplers
8	Base Foot
9	Oil Drain
10	Sight Glass
11	R Port Pressure Limiting Valve
12	Solenoid Directional Valve
13	Electric Box

▼ HGTW Outline Dimensional Drawing :



▼ HGTW Hydraulic Schematic Diagram:



▼ HGTW Flow-Pressure Curve:

