

▼ HATW Air Hydraulic Wrench Pumps



Maximum output pressure: 70MPa

Motor size: 3/5.4KW

Low pressure flow: 7/15L/Min

Medium pressure flow: 4L/Min

High pressure flow: 1/2L/Min

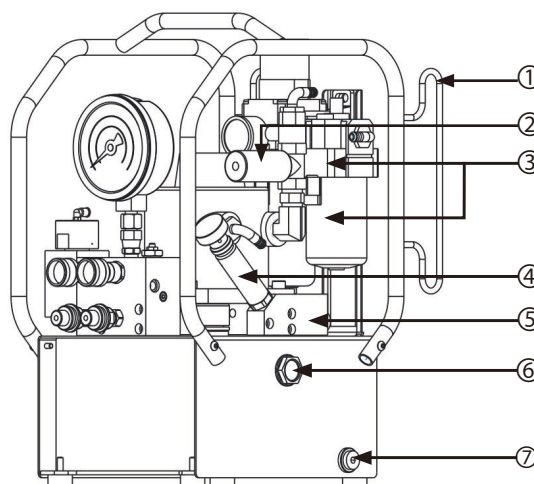
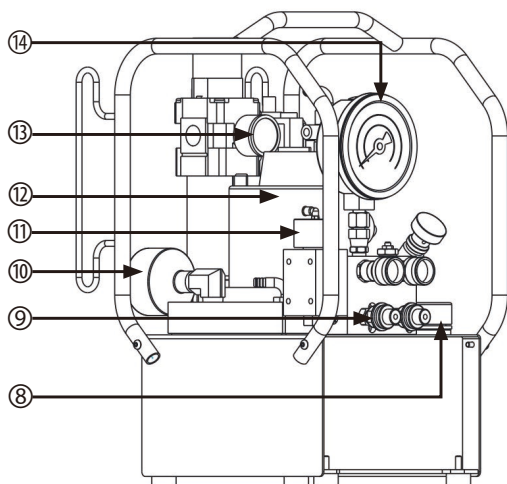
Reservoirs capacity: 5/10L

- High-power pneumatic motor, high working efficiency
- Dual output (one drive two)
- Standard air source treatment unit
- High-efficiency silencer for noise reduction
- Submerged air-cooled design to lower oil temperature
- 6m metal pneumatic control handle with threaded tubing, reliable and durable
- Non-rotating pressure gauge mount for easy installation
- Equipped with hose reel for air line storage
- HA6TW three-stage flow control for higher efficiency

▼ HATW Type Specification Sheet:

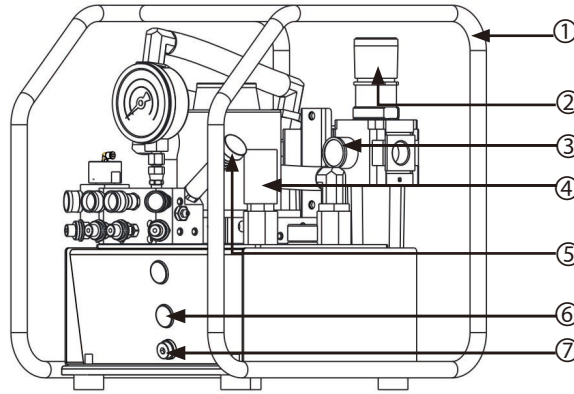
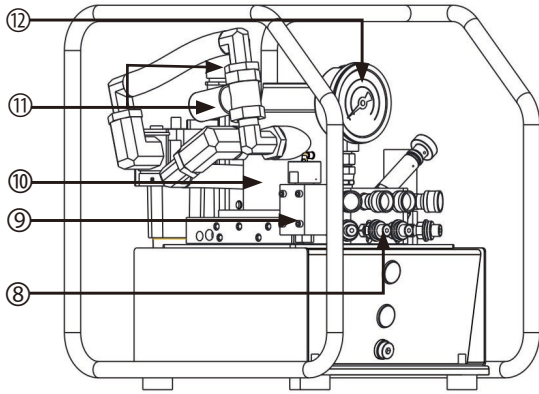
Model	Motor Power	Max. Air Consumption	Oil Capacity	Low Pressure Flow	Medium Pressure Flow	High Pressure Flow	Number of Driven Wrenches	Weight (without oil)
HA5TW-2	3KW	220M ³ /H	5L	7L/Min	-	1L/Min	2	27KG
HA5TW-4	3KW	220M ³ /H	5L	7L/Min	-	1L/Min	4	29KG
HA6TW-4	5.4KW	396M ³ /H	10L	15L/Min	4L/Min	2L/Min	4	56KG

▼ HA5TW Product Illustration:



NO	Name
1	Wire winder
2	Pneumatic switch
3	Triplet
4	Relief Valve
5	Pilot Relief Valve Block
6	Sight Glass
7	Oil Drain
8	Refueling And Exhaust Outlet
9	Couplers
10	Suppressor
11	Air controlled directional valve
12	Air Motor
13	Barometer
14	Gauge

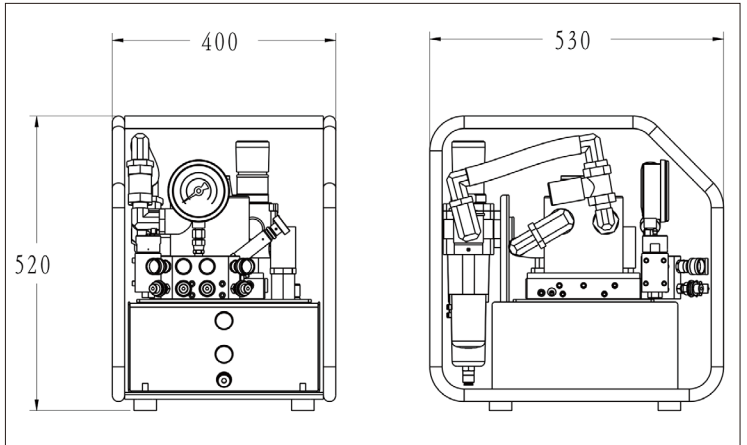
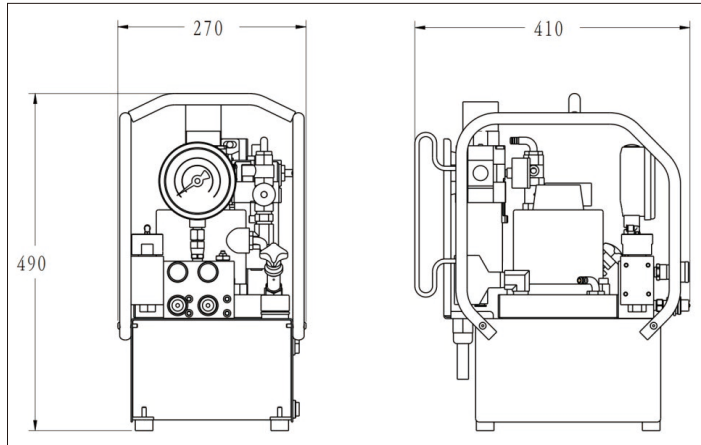
▼ HA6TW Product Diagram:



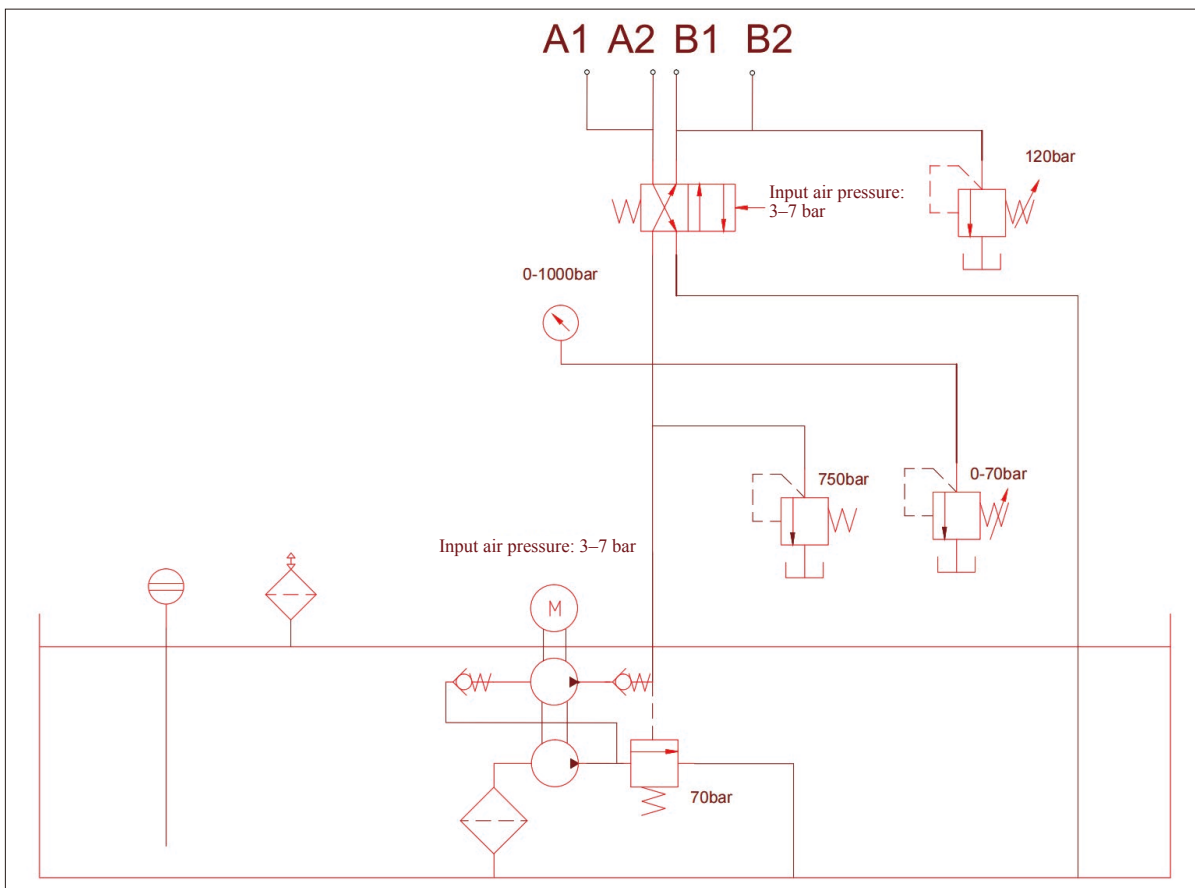
NO	Name
1	Protective Frame
2	Air Service Unit
3	Air Pressure Gauge
4	Muffler
5	Pressure Regulating Valve
6	Oil Level Gauge
7	Oil Drain Port
8	Quick Coupling
9	Pneumatic Directional Valve
10	Pneumatic Motor
11	Pneumatic Control Switch
12	Pressure Gauge

▼ HA5TW Outline Drawing

▼ HA6TW Outline Drawing



▼ HATW Hydraulic Schematic:



Hydraulic Wrench Pumps (70MPa)

▼ HA5TW/HA6TW Flow-Pressure Curve :

