

## ▼ EX-HE5TW Explosion-Proof Hydraulic Wrench Pumps



Motor size : 1.5KW

High pressure flow : 0.85L/Min

Low pressure flow : 7L/Min

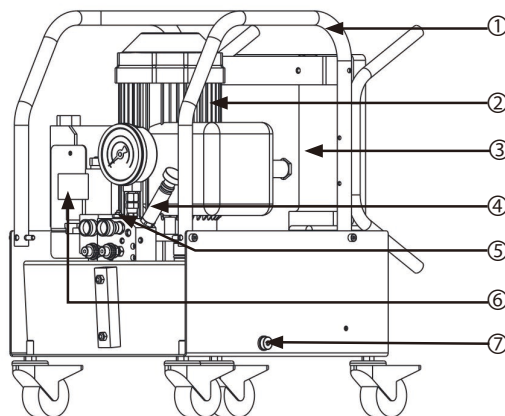
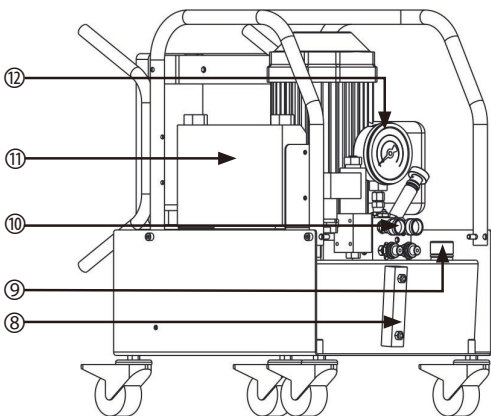
Reservoirs capacity : 20L

- Explosion-proof design grade: Exd II BT4
- Increased safety electric control box, equipped with three-phase overload protector
- German import reversing valve
- ABB explosion-proof motor
- Two-stage flow, high efficiency
- Adjustable relief valve, continuous pressure adjustable
- Heat dissipation aluminum bar, Low temperature rise
- 6M wire handle
- Protection frame, lockable casters
- Oil weight: 120KG

### ▼ EX-HE5TW Type Specification Sheet:

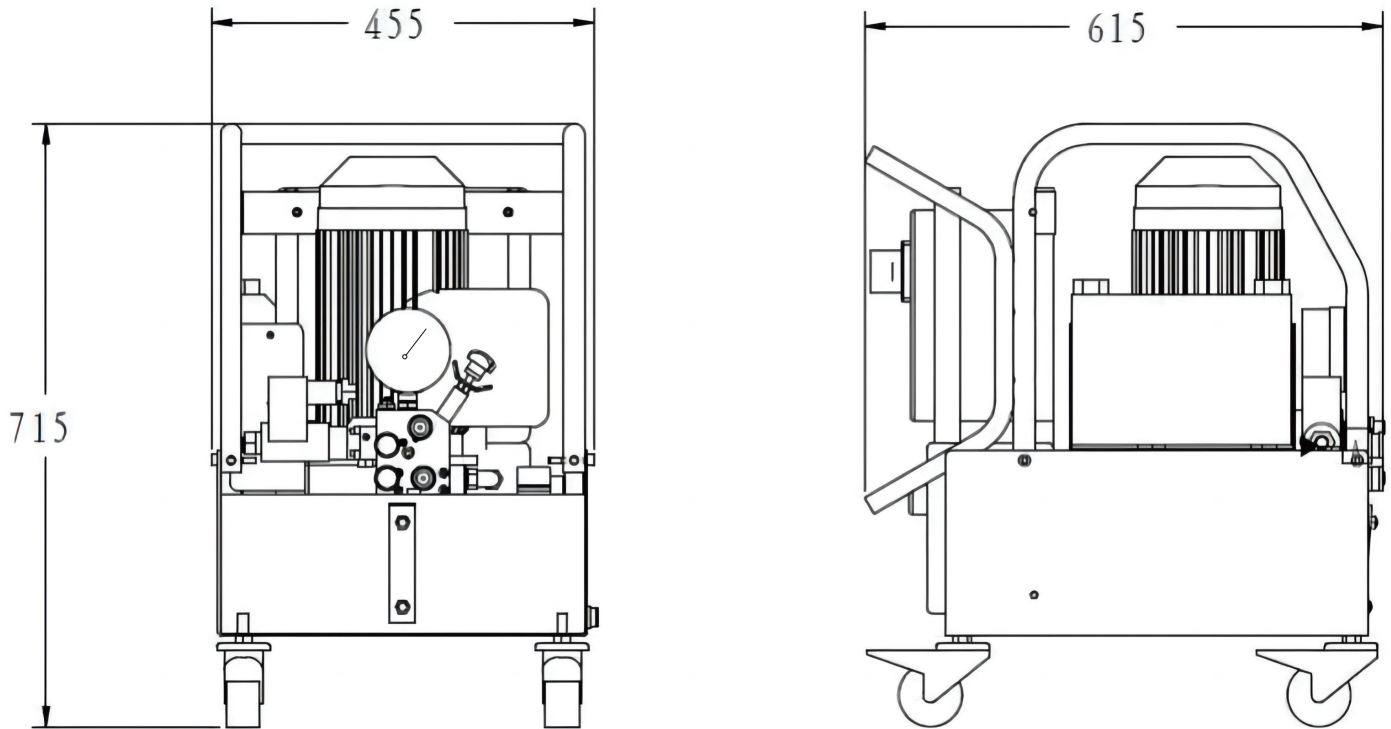
Model Number	Motor size	Voltage/ phase	High Pressure Flow	Low Pressure Flow	Reservoirs capacity	Number of driver wrench	Number of oil drains
EX-HE5TW-2	1.5KW	380VAC/3ph	0.85L/Min	7L/Min	20L	2	4
EX-HE5TW-4	1.5KW	380VAC/3ph	0.85L/Min	7L/Min	20L	4	8

### ▼ EX-HE5TW Product Illustration:

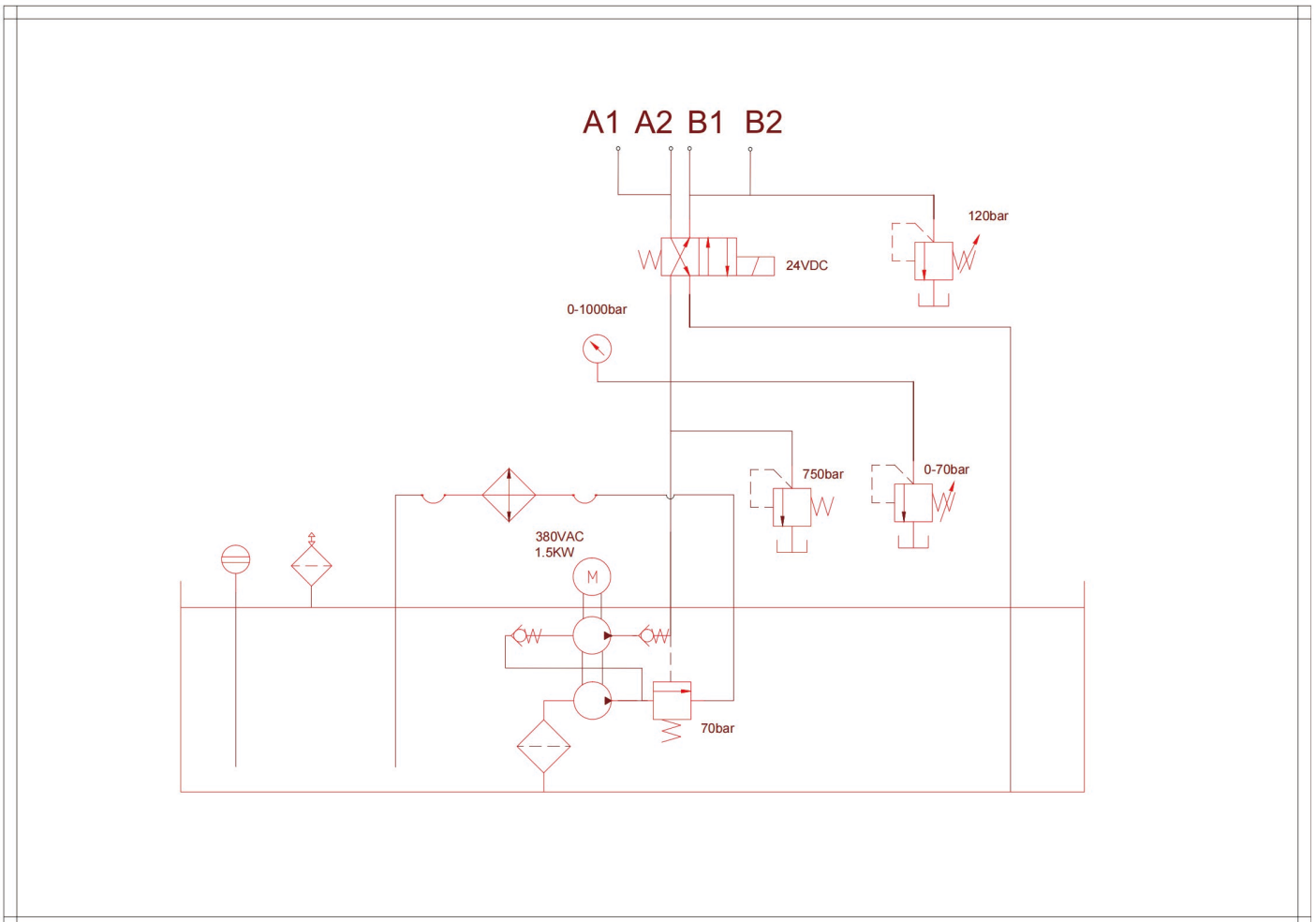


NO	Name
1	Protected Framework
2	Explosion-proof machine
3	Explosion-proof Electric Box
4	Relief Valve
5	R Port Pressure Limiting Valve
6	Explosion-proof Solenoid Directional Valve
7	Oil Drain
8	Sight Glass
9	Refueling And Exhaust Outlet
10	Couplers
11	Cooling aluminum bar
12	Gauge

▼ EX-HE5TW Outline Dimensional Drawing:



▼ EX-HE5TW Hydraulic Schematic Diagram:



▼ EX-HE5TW Flow-Pressure Curve:

