

▼ ESP1500/2500 Servo Intelligent Pressure Pumps



Maximum output pressure: 150/250MPa

Motor size: 1.5KW

Low pressure flow: 2.5L/Min

High pressure flow: 0.2/0.3L/Min

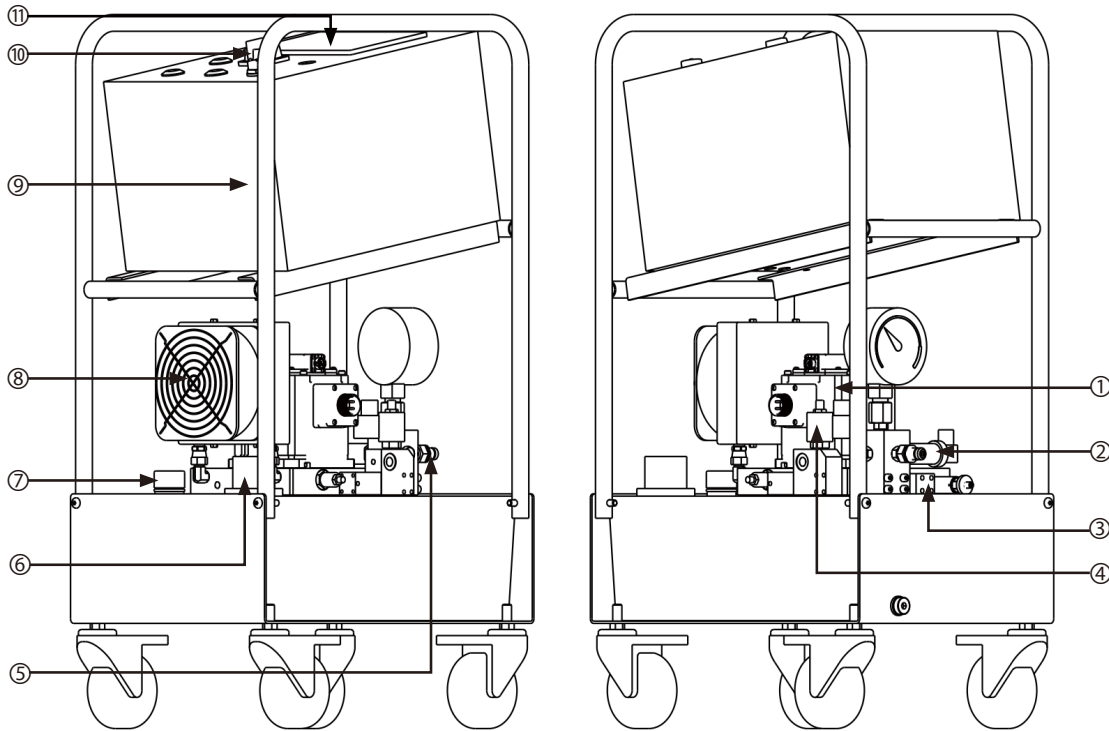
Reservoirs capacity: 20L

- PLC touch screen, built-in automatic pressure control program
- Set the target pressure after a key start, automatic pressure maintenance
- Direct drive pressure pump structure, no supercharger, high life, good pressure stability
- Manual emergency pressure relief knob, can still be emergency pressure relief in the case of power failure
- Air-cooled radiator, continuous work of low hydraulic oil temperature rise
- pressure holding accuracy can be set, 0.5MPa Control accuracy
- Real-time recording of pressure-time curve
- External adjustable pressure limiting valve
- With boost pressure timeout alarm and sensor signal alarm function
- Display unit MPa/BAR/PSI/KN can be switched
- Equipped with liquid level sensor, with oil temperature level alarm function

▼ ESP Series Type Specification Sheet:

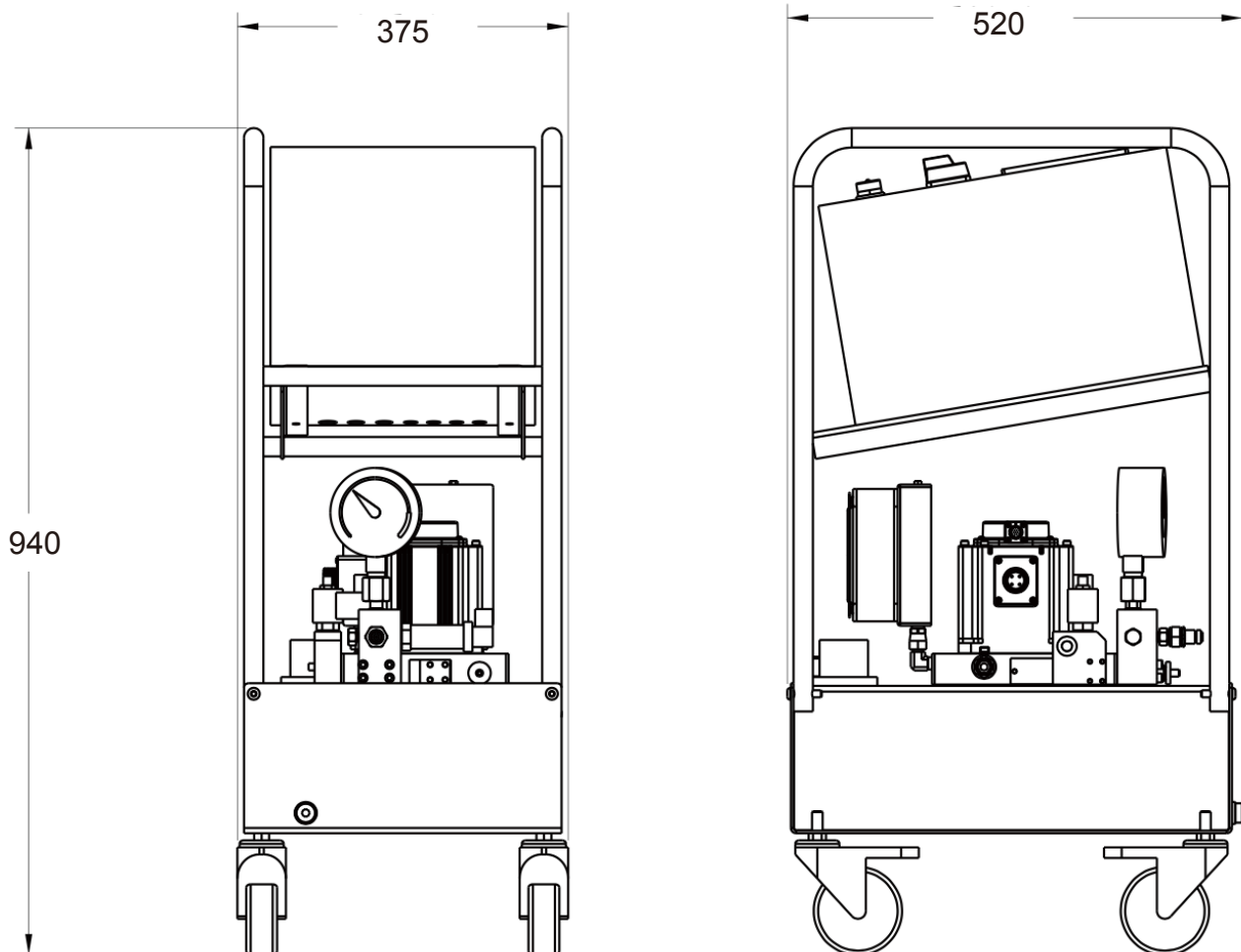
Model Number	Maximum output pressure	Voltage	Motor size	Low Pressure Flow	High Pressure Flow	Reservoirs capacity	Touch screen size	Weight without oil
ESP1500	150MPa	230VAC	1.5KW	2.5L/Min	0.3L/Min	20L	7 inches	55KG
ESP2500	250MPa	230VAC	1.5KW	2.5L/Min	0.2L/Min	20L	7 inches	55KG

▼ ESP Series Product Illustration:

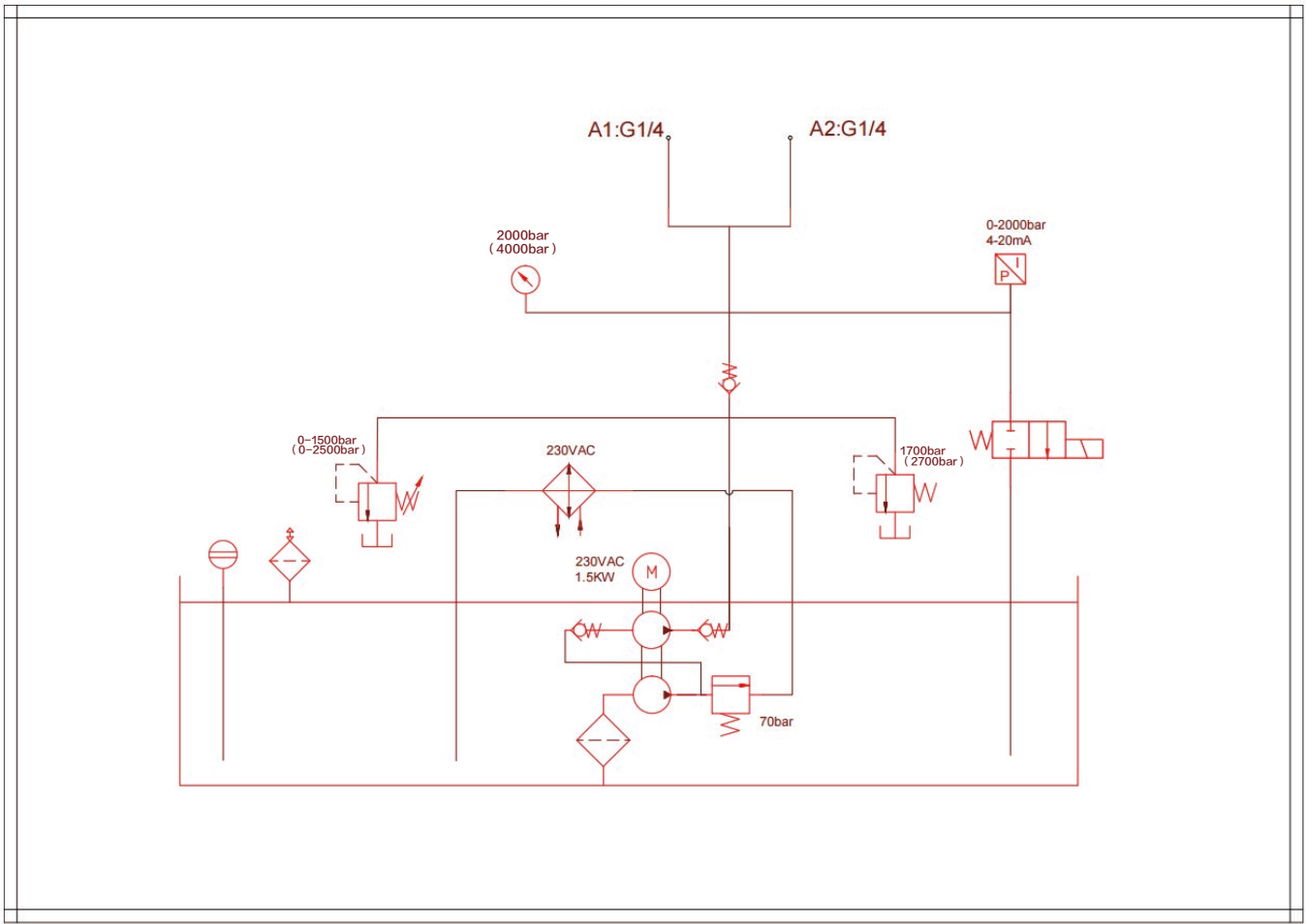


NO	Name
1	Servo motor
2	Pressure sensor
3	Pressure retaining valve block
4	Solenoid release valve
5	Male Coupler
6	Liquid level temperature sensor
7	Refueling and exhaust outlet
8	Heat exchanger
9	Electric box
10	Mains switch
11	PLC touch screen

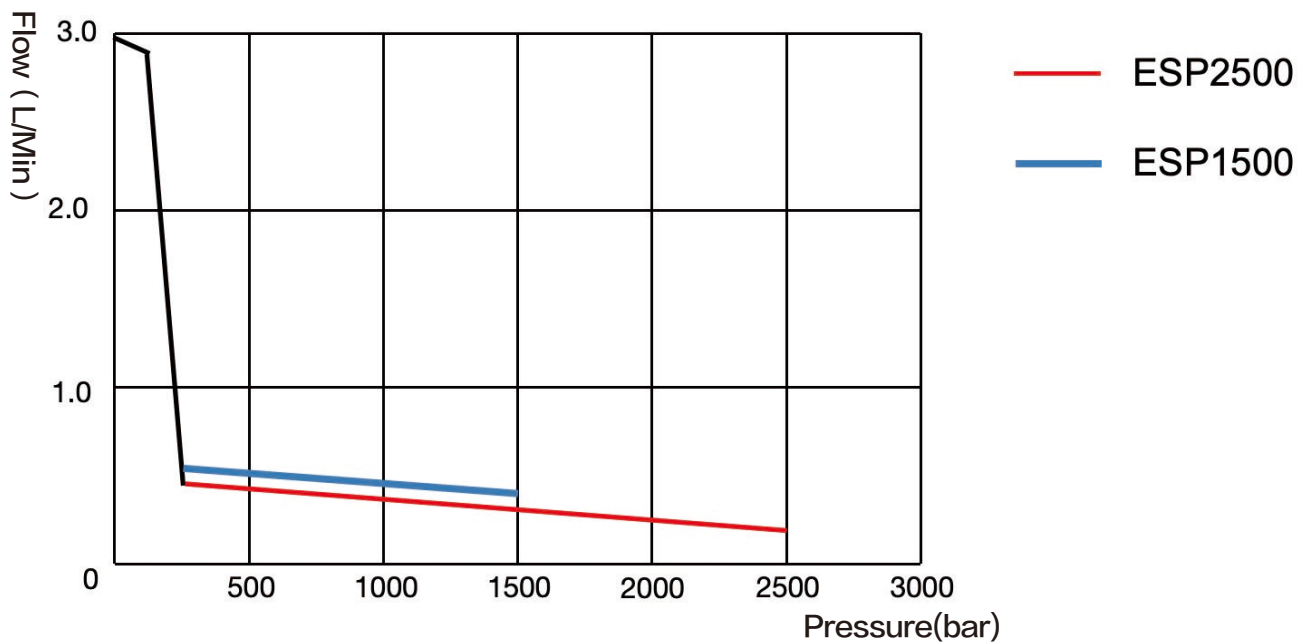
▼ ESP Series Outline Dimensional Drawing:



▼ ESP Series Hydraulic Schematic Diagram:



▼ ESP Series Flow-Pressure Curve:



▼ Operation main interface diagram:



Procedure of use:

1. Set the target pressure on the screen.
2. Click the start button.
3. The hydraulic pump automatically increases the pressure and reaches the target pressure, giving a status indication.
4. Perform pre-tightening, disassembly and installation, etc.
5. When the pressure drops to the set precision value, the servo starts the pressure compensation operation, and the pressure rises again to the target value.
6. Work completed, click the pressure relief button, the pressure is automatically unloaded.

▼ Historical curve query:

