

▼ EPW Electric Ultra-high Pressure Pumps



Motor size: 1.1KW

Low pressure flow: 3L/Min

High pressure flow: 0.4-0.8L/Min

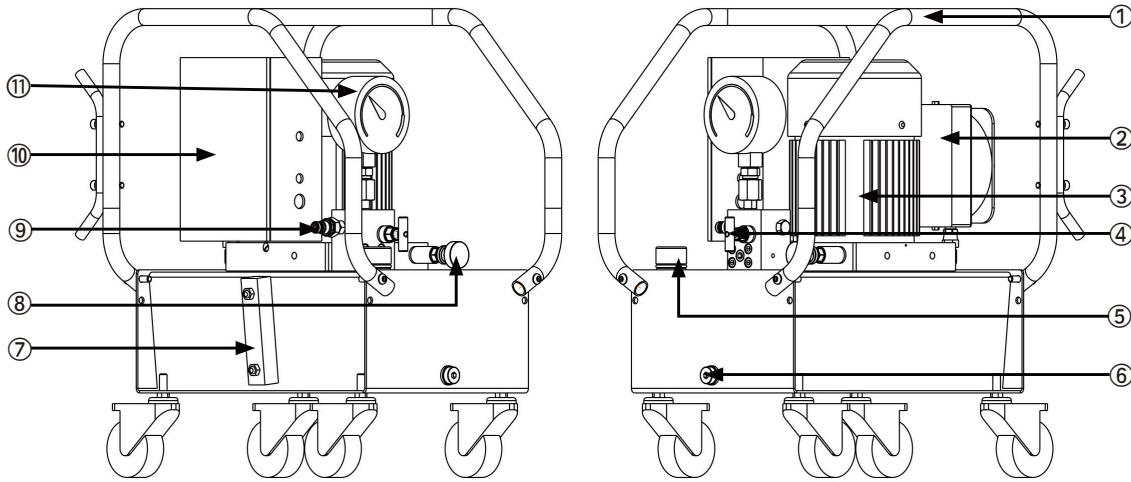
Reservoirs capacity: 10/40L

- Brushless motor, maintenance-free
- Two-stage pump, high efficiency
- High pressure radial piston pump, no supercharger, long life
- Three-phase motor protector, effectively ensure motor safety
- Air-cooled radiator, continuous working temperature rise low
- High pressure regulator, continuous pressure adjustable
- Weak wire control handle
- Media: ISO VG46 or water glycol
- Removable wire winder for easy cable collection

▼ EPW Product Specification Sheet:

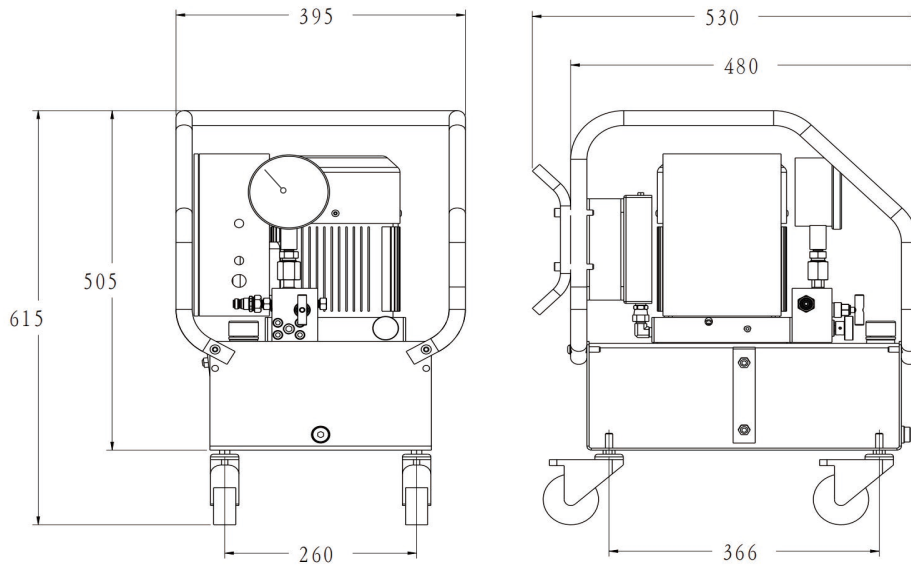
Model Number	Rated Pressure(bar)	Voltage (VAC)	Motor size (KW)	Low Pressure Flow(L/Min)	High Pressure Flow(L/Min)	Noise level(dB)	Reservoirs capacity(L)	Weight Without Oil(Kg)
EPW1500F10	1500	380/230	2.2	3	0.8	80	10	46
EPW2500F10	2500	380/230	2.2	3	0.45	80	10	46
EPW1500F20	1500	380/230	2.2	3	0.8	80	20	54
EPW2500F20	2500	380/230	2.2	3	0.45	80	20	54
EPW1500F40	1500	380/230	2.2	3	0.8	80	40	72
EPW2500F40	2500	380/230	2.2	3	0.45	80	40	72

▼ EPW Product Illustration :

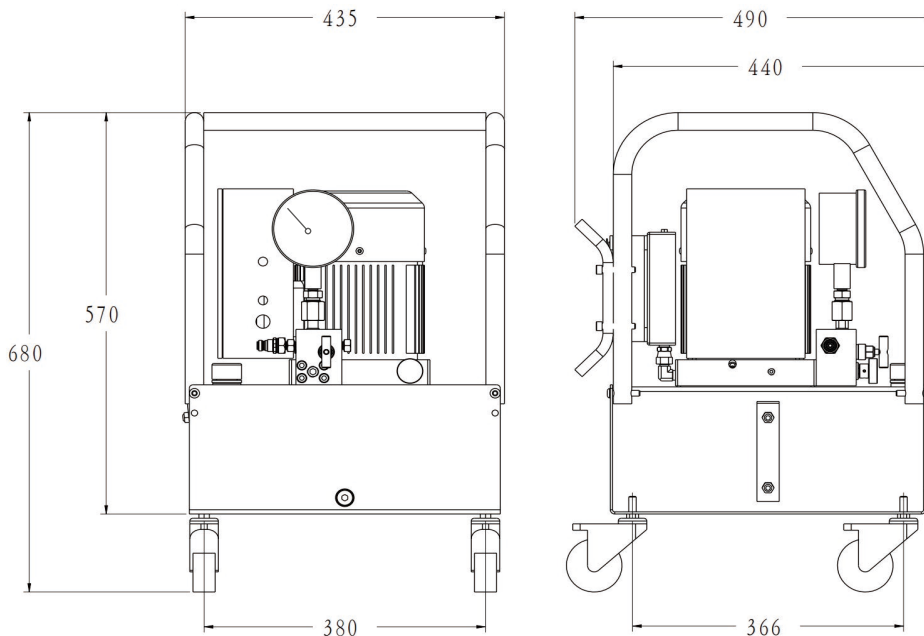


NO	Name
1	Protected Framework
2	Heat Exchanger
3	Motor
4	Release Valve
5	Refueling And Exhaust Outlet
6	Oil Drain
7	Sight Glass
8	Relief Valve
9	Male Coupler
10	Electric Box
11	Gauge

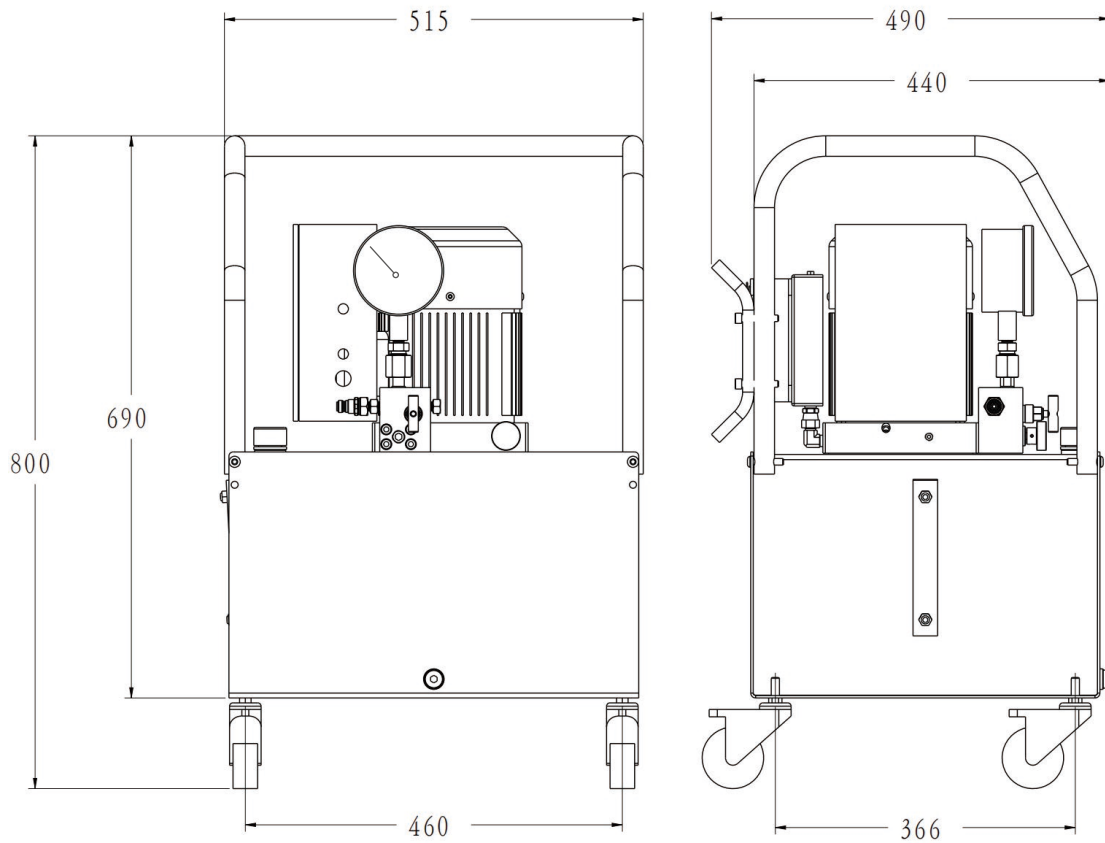
▼ EPW-F10 Outline Dimensional Drawing :



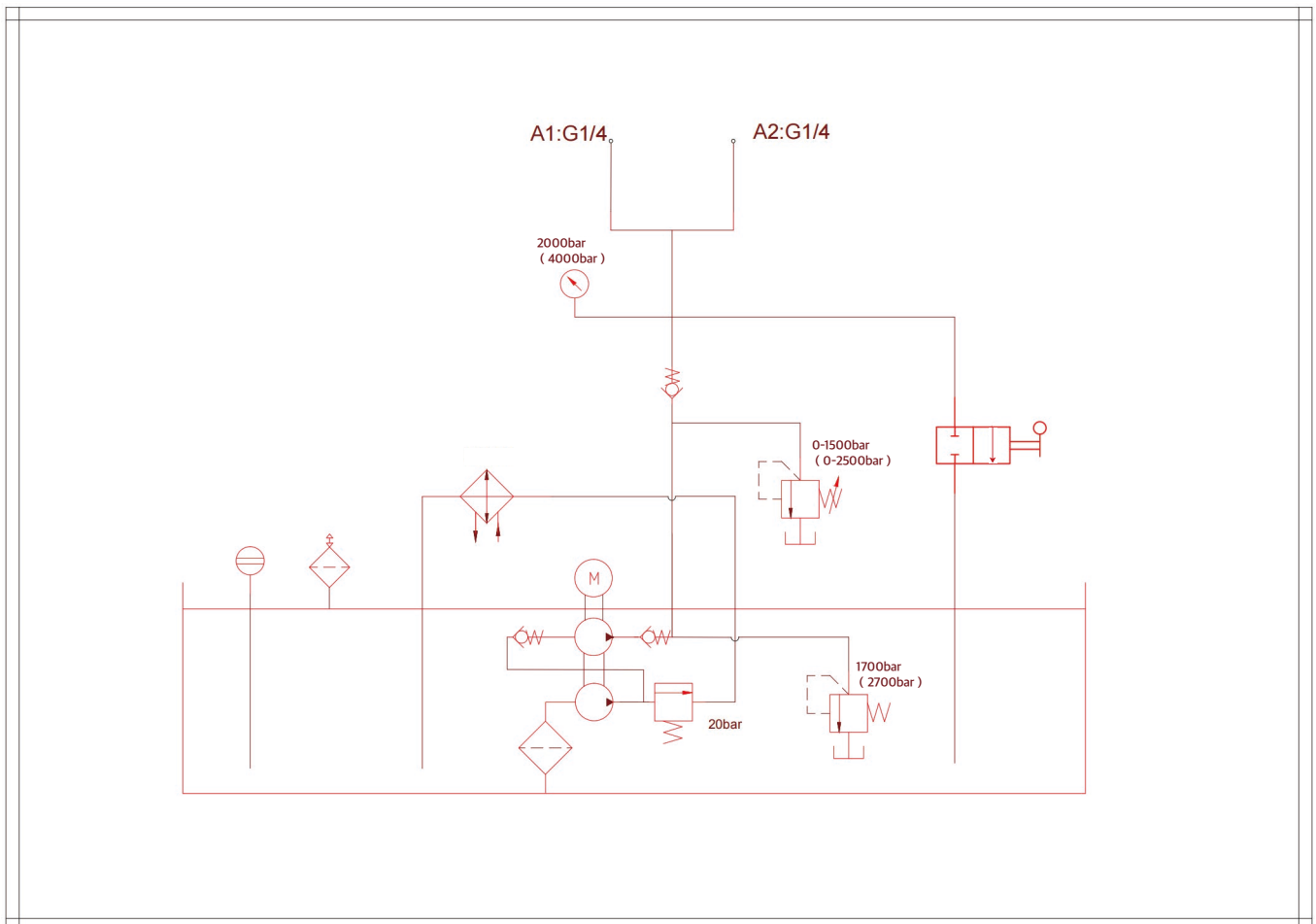
▼ EPW-F20 Outline Dimensional Drawing :



▼ EPW-F40 Outline Dimensional Drawing:



▼ EPW Hydraulic Schematic Diagram:



▼ EPW Flow-Pressure Curve :

