

## ▼ EPL Portable Electric Ultra-high Pressure Pumps



EPL ultra-high pressure pumps

Maximum output pressure: 250MPa

Motor power: 1KW

Low pressure flow: 1.5L/Min

High pressure flow: 0.15/0.25L/Min

Repeated pressure accuracy: 2MPa

Available oil capacity: 5L

- EPL series are two-stage plunger pump design, no supercharger
- Brushless motor drive, maintenance-free, low noise
- Adjustable relief valve, precise pressure regulation
- Manual unloading valve, safe and reliable
- No leakage design, pressure maintenance after power failure
- Aluminum alloy welded tank, compact design, Light weight
- CEJN 116/125 series snap-in connector
- Weak wire control handle

### ▼ EPL Type Specification Sheet:

Model Number	Rated Pressure (bar)	Low Pressure Flow(L/Min)	High Pressure Flow(L/Min)	Available oil capacity(L)	Oil outlet thread	Matching joint	Weight without oil(KG)
EPL1500S5	1500	1.5	0.25	5	G1/4	CEJN: 116 series	18
EPL2500S5	2500	1.5	0.15	5	G1/4	CEJN: 125 series	19

▼ Two output valve blocks are available:

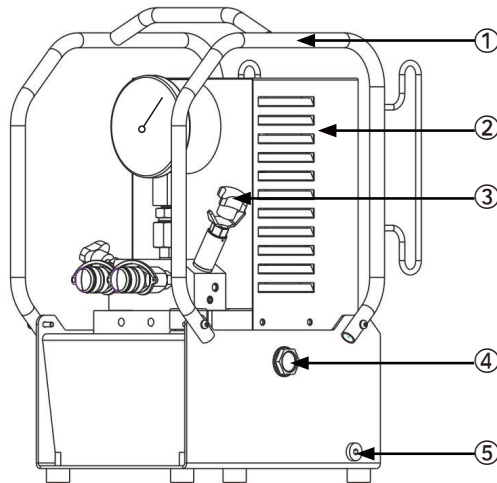
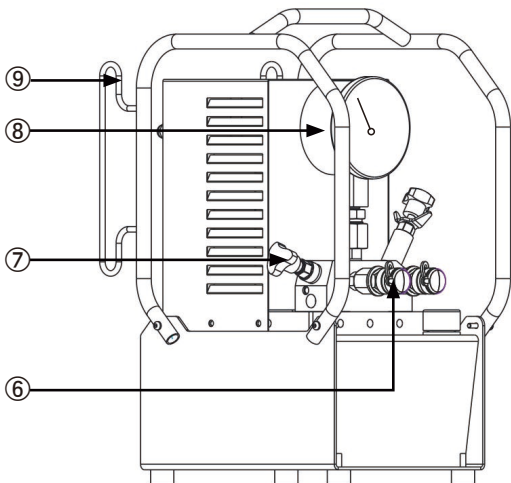


EPL1500-1



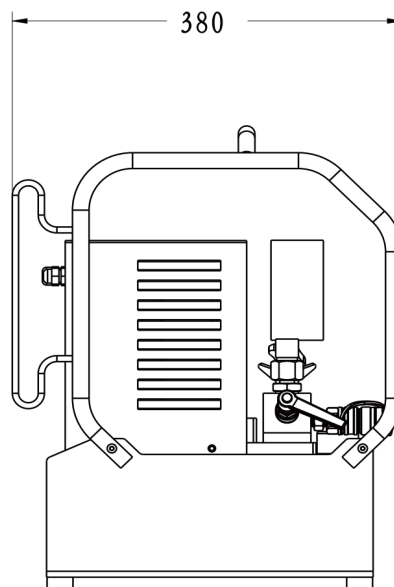
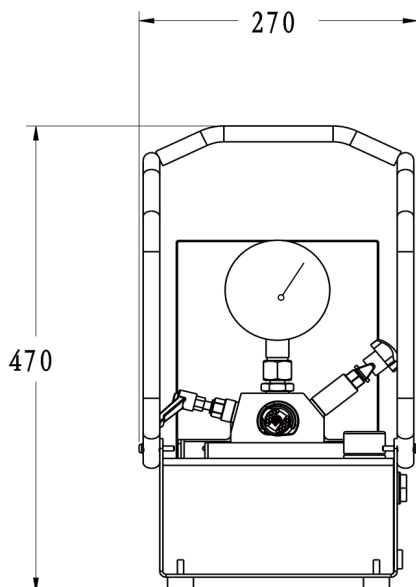
EPL2500-2

▼ EPL Product Illustration:

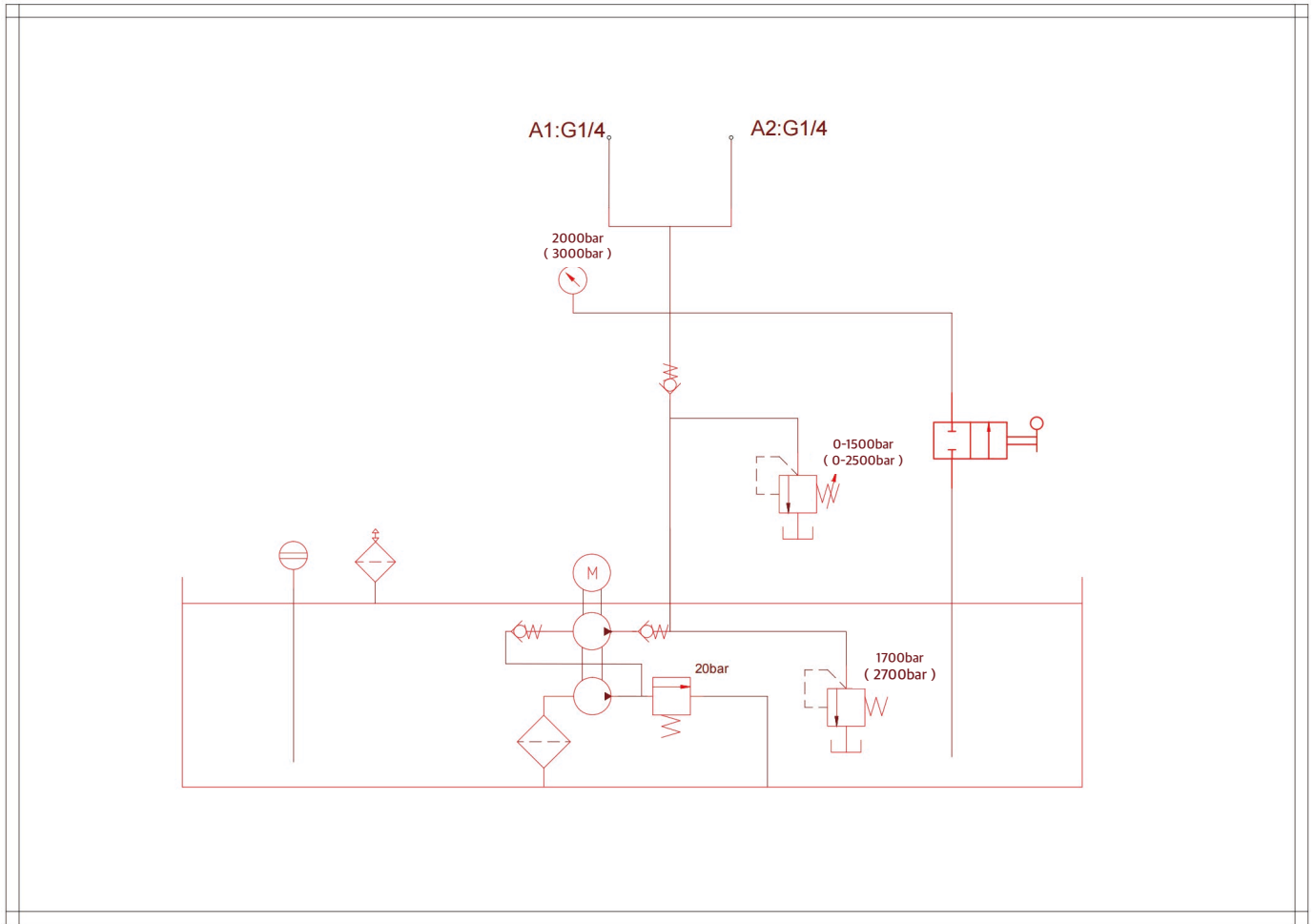


NO	Name
1	Protected Framework
2	Shield
3	Relief Valve
4	Oil Level Gauge
5	Oil Outlet
6	Quick Interface
7	Release Valve
8	Manometer
9	Wire winder

▼ EPL Outline Dimensional Drawing :



## ▼ EPL Hydraulic Schematic Diagram:



## ▼ EPL Pressure Flow Diagram:

