

▼ EP1500F5 Electric Ultra-high Pressure Pumps



Maximum output pressure: 150MPa

Motor size: 1.1KW

Low pressure flow: 2.5L/Min

High pressure flow: 0.3L/Min

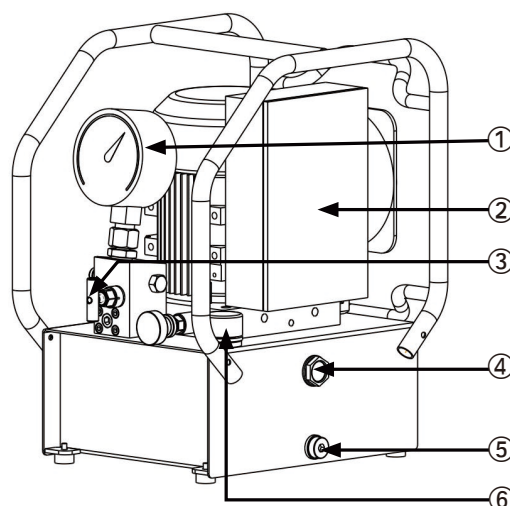
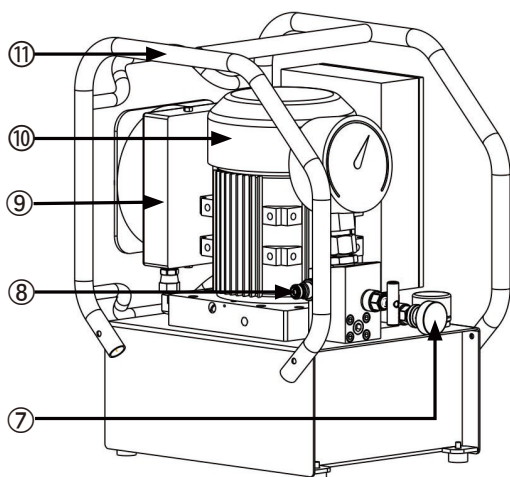
Reservoirs capacity: 5L

- Brushless motor maintenance-free, low noise
- Gear pump, plunger pump structure, two-stage flow
- Efficient air-cooled radiator, low temperature rise in continuous operation
- Integrated frame winding device design, easy to control line storage
- Pressure gauge rotation-free rapid disassembly
- Built-in safety valve, external precision pressure regulator
- Standard with two output interfaces

▼ EP1500F5 Type Specification Sheet:

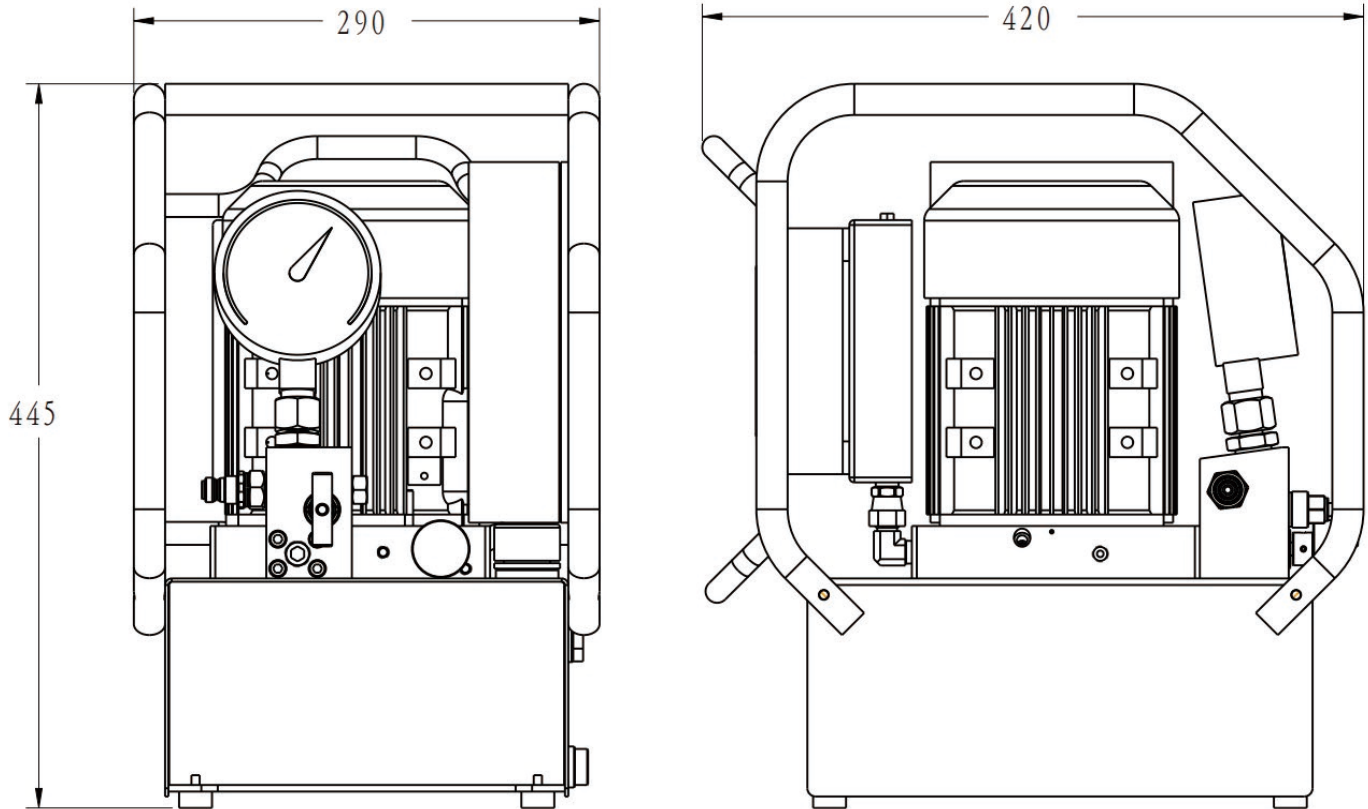
Model Number	Voltage	Motor size	Low Pressure Flow	High Pressure Flow	Reservoirs capacity	Number of Oil Drains	Weight without oil
EP1500F5	230VAC	1.1KW	2.5L/Min	0.3L/Min	5L	2	27KG
EP1500F5-115/60	115VAC	1.1KW	2.5L/Min	0.3L/Min	5L	2	27KG

▼ EP1500F5 Product Illustration:

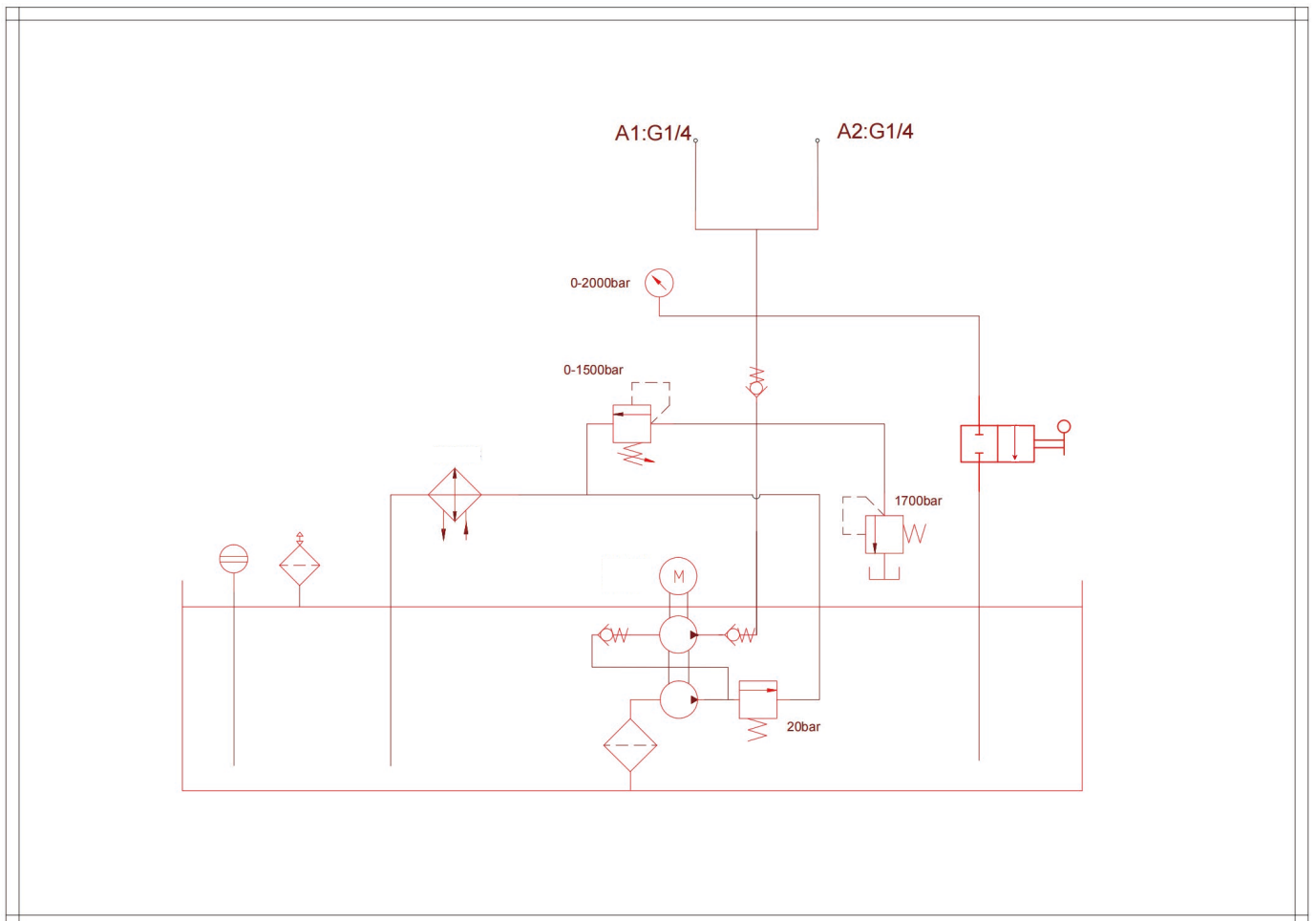


NO	Name
1	Gauge
2	Electric Box
3	Release Valve
4	Sight Glass
5	Oil Drain
6	Refueling And Exhaust Outlet
7	Relief Valve
8	Male Coupler
9	Heat Exchanger
10	Motor
11	Protected Framework

▼ EP1500F5 Outline Dimensional Drawing:



▼ EP1500F5 Hydraulic Schematic Diagram:



▼ EP1500F5 Flow-Pressure Curve :

