

▼ CUSP Ultra-Flat High-Tonnage Cylinder



CUSP Series

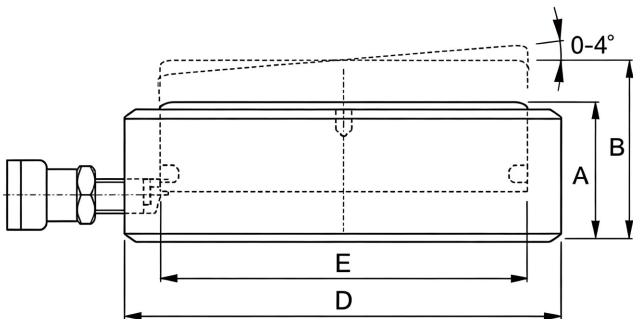
Rated Pressure: 70MPa

Rated Tonnage: 10-1000ton

Stroke Range: 6/10,7-17mm

Integrated: Tilting Saddle

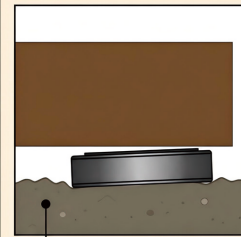
- Able to withstand up to 4% side load under maximum load
- Low body height, ultra-thin heavy-duty design, equipped with integrated tilting saddle cylinder
- Built-in tilting saddle with maximum 4° tilt for even load distribution
- Adopts gas nitriding and post-oxidation surface treatment for superior corrosion resistance and side load resistance
- Equipped with maximum stroke indicator line
- All models fitted with CEJN quick couplers and dust caps
- No stroke limiting stop ring



IMPORTANT!

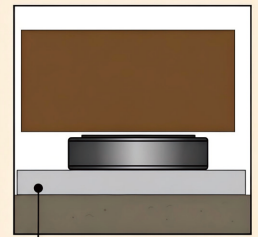
All Ultra-Flat Cylinders require a solid lifting surface for correct support. The use of these flat cylinders on surfaces such as sand, mud or dirt, may result in cylinder damage.

INCORRECT!



Rough soil

CORRECT!



Flat lifting surface

Cylinder Capacity @ 700 bar (ton (kN))	Tilted Stroke (mm)	Straight Stroke (mm)	Model Number	Tilting +/- (degree)	Cylinder Effective Area (cm ²)	Oil Capacity (cm ³)	Collapsed Height A (mm)	Extended Height B (mm)	Cylinder Outside Diameter D (mm)	Cylinder Bore Diameter E (mm)	Weight (kg)
10 (97)	6	6.7	CUSP10	2	13.9	9.3	35.5	41.5	72	42	1.2
20 (198)	6	7	CUSP20	2	28.3	19.8	40.5	46.5	90	60	1.9
30 (310)	6	7.3	CUSP30	2	44.2	32.1	42.5	48.5	105	75	2.7
50 (550)	10	13.3	CUSP50	4	78.5	104	57	67	130	100	5.6
75 (792)	10	14	CUSP75	4	113.1	158	60.5	70.5	150	120	8
100 (1078)	10	14.7	CUSP100	4	153.9	226	63.5	73.5	170	140	10.8
150 (1589)	10	14.3	CUSP150	3	227	324	65	75	200	170	15.3
200 (2090)	10	14.9	CUSP200	3	298.6	446	69	79	229	195	21.5
250 (2542)	10	14.5	CUSP250	3	363.1	569	72.5	82.5	252	215	27.3
300 (3167)	10	14.1	CUSP300	2	452.4	637	72.5	82.5	282	240	34.4
400 (4008)	10	14.6	CUSP400	2	572.6	837	77.5	87.5	316	270	46.2
500 (5115)	10	15.2	CUSP500	2	730.6	1111	82.5	92.5	356	305	62.7
600 (5987)	10	15.6	CUSP600	2	855.3	1334	87.5	97.5	386	330	78.4
750 (7527)	10	16.3	CUSP750	2	1075.2	1757	93.5	103.5	432	370	105.2
1000 (10.165)	10	17.4	CUSP1000	2	1452.2	2531	103	113	502	430	157