

## ▼ CULP Ultra-Flat Cylinder With Stop Ring



CULP Series

Rated Pressure: 70MPa

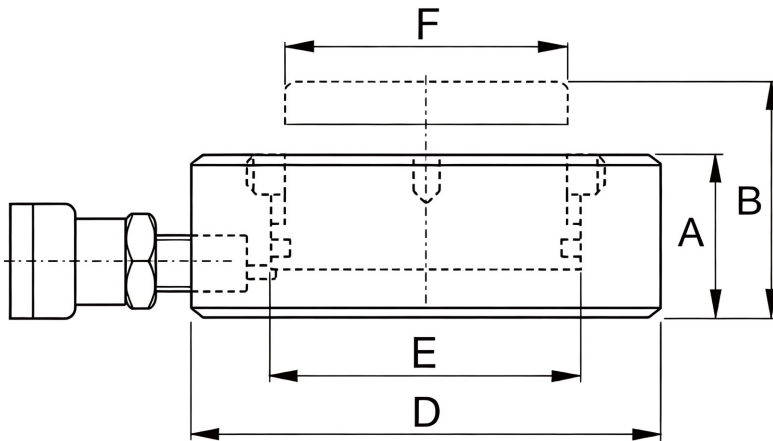
Rated Tonnage: 10-100ton

Stroke Range: 6mm



HSP Series Hoses  
RIVERLAKE provides various types of high-grade hydraulic hoses. Choose original RIVERLAKE high-pressure hoses for complete system matching.

- Withstand side load up to 4% at maximum rated capacity
- Stop ring prevents excessive plunger stroke
- Low collapsed body height
- All models equipped with CEJN quick couplers and dust caps
- Gas nitriding and post-oxidation surface treatment deliver excellent corrosion resistance and side load resistance

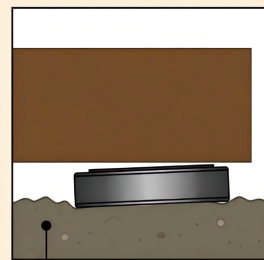


### IMPORTANT!

All Ultra-Flat Cylinders require a solid lifting surface for correct support. The use of these flat cylinders on surfaces such as sand, mud or dirt, may result in cylinder damage.



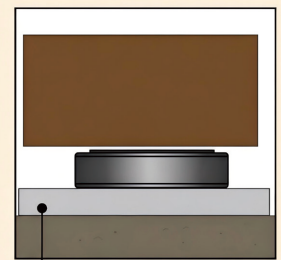
**INCORRECT!**



Rough soil



**CORRECT!**



Flat lifting surface

Cylinder Capacity @ 700 bar	Stroke (mm)	Model Number	Cylinder Effective Area (cm <sup>2</sup> )	Oil Capacity (cm <sup>3</sup> )	Collapsed Height A (mm)	Extended Height B (mm)	Outside Diameter D (mm)	Cylinder Bore Diameter E (mm)	Plunger Diameter F (mm)	Weight (kg)
10 (97)	6	CULP10	13.9	8.3	27.5	33.5	72	42	38	1.0
20 (198)	6	CULP20	28.3	17.0	32.0	38.0	90	60	55	1.7
30 (310)	6	CULP30	44.2	26.5	35.0	41.0	105	75	67	2.5
50 (550)	6	CULP50	78.5	47.1	44.5	50.5	140	100	90	5.4
100 (1078)	6	CULP100	153.9	92.5	65.0	71.0	195	140	125	11.5