

▼ BTW700 Lithium Battery Digital Wrench Pumps



Maximum output pressure : 70MPa

Power size : 750W

Low pressure flow : 4.8L/Min

High pressure flow : 0.45L/Min

- The integrated frame is designed with a built-in cable winder, which facilitates the storage of control cables.
- It is equipped with a precision pressure regulating valve that can lock the pressure when the target pressure is reached.
- A servo motor is installed, and the working noise is below 75dB.
- It comes standard with one 26AH high-capacity lithium battery, providing long-lasting power.
- The lithium battery can be purchased separately, and a charger is included as standard for the battery.
- It is equipped with a pressure gauge and a couplers. The pressure gauge can be quickly disassembled and assembled without rotation.
- A 6-meter digital display handle is included as standard. The handle can monitor the real-time pressure value.
- An electromagnetic automatic exhaust valve is installed, which automatically opens the intake and exhaust functions when powered on.

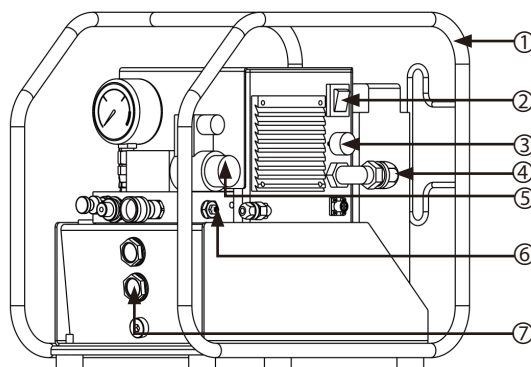
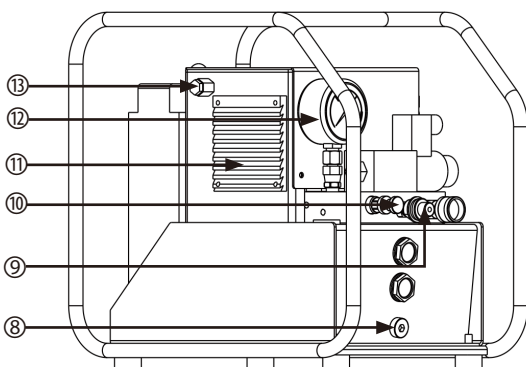
▼ BTW700 Type Specification Sheet:

Model	Voltage	Power Size	Low-pressure Flow	High-pressure Flow	Tank Capacity	Weight without Oil	Number of Oil Outlets
BTW700	48VDC	750W	4.8L/Min	0.45L/Min	5L	26KG	2

▼ BTW700 Packaging list

Model	Specification	Quantity
BTW700	Lithium battery wrench pump	1
BP-48V-26AH	Lithium battery, 48V 26AH	1
Quick charger	6V \rightleftharpoons 2A	1

▼ BTW700 Product Illustration:



NO	Name
1	Protection Frame
2	Main Switch
3	Motor Speed Knob
4	Battery Connection Cable
5	Solenoid Directional Valve
6	R Port Pressure Limiting Valve
7	Oil Level Gauge
8	Oil Drain Port
9	Quick Connector
10	Relief Valve
11	Heat Dissipation Port
12	Pressure Gauge
13	Exhaust Port

▼Introduction to the BP - 48V - 26AH lithium battery



◆BP-48V-26AH lithium battery can be purchased separately.

▼BP-48V-26AH Packaging list

Model	Specification	Quantity
BP-48V-26AH	Lithium battery, 48V 26AH	1
Quick charger	48V 5A	1
Carton	Carton packaging	1

Technical Features :

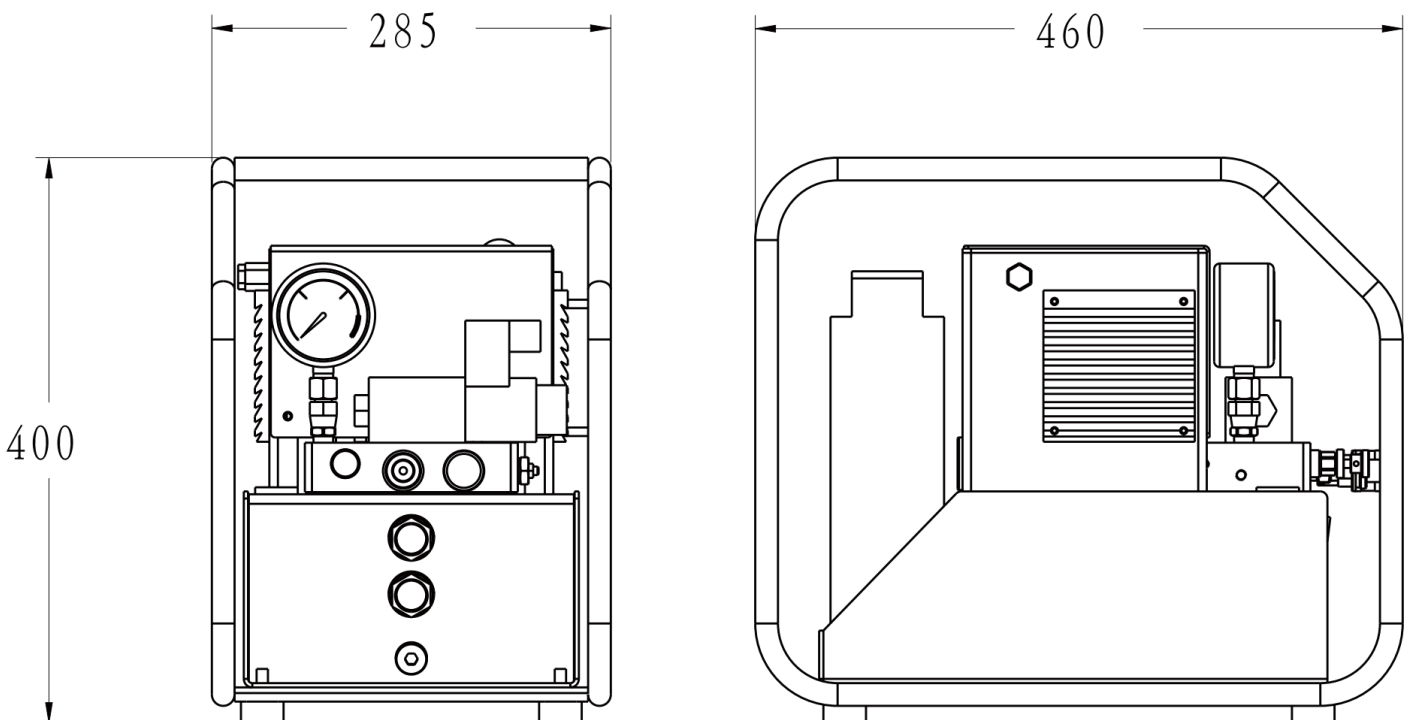
Safety Protection :

- Built-in High-quality BMS Battery Management System: This system can accurately monitor and manage the charging and discharging processes of the battery, ensuring the safe and stable operation of the battery. It effectively prevents issues such as overcharging, over-discharging, and overheating, extends the battery's service life, and improves the battery's utilization efficiency.
- Overcharge Protection: Effectively prevents the battery from overcharging, avoiding battery damage or safety hazards caused by overcharging.
- Over-discharge Protection: Prevents the battery from over-discharging, extending the battery's service life and ensuring safe use.
- Over-temperature Protection: Automatically protects the battery when it is in an over-temperature state, preventing various risks caused by high temperatures.
- Short-circuit Protection: The fuse automatically protects the battery in case of a short circuit, avoiding equipment damage caused by short circuits.
- PTC Protection: It can balance temperature and current, providing comprehensive safety protection.

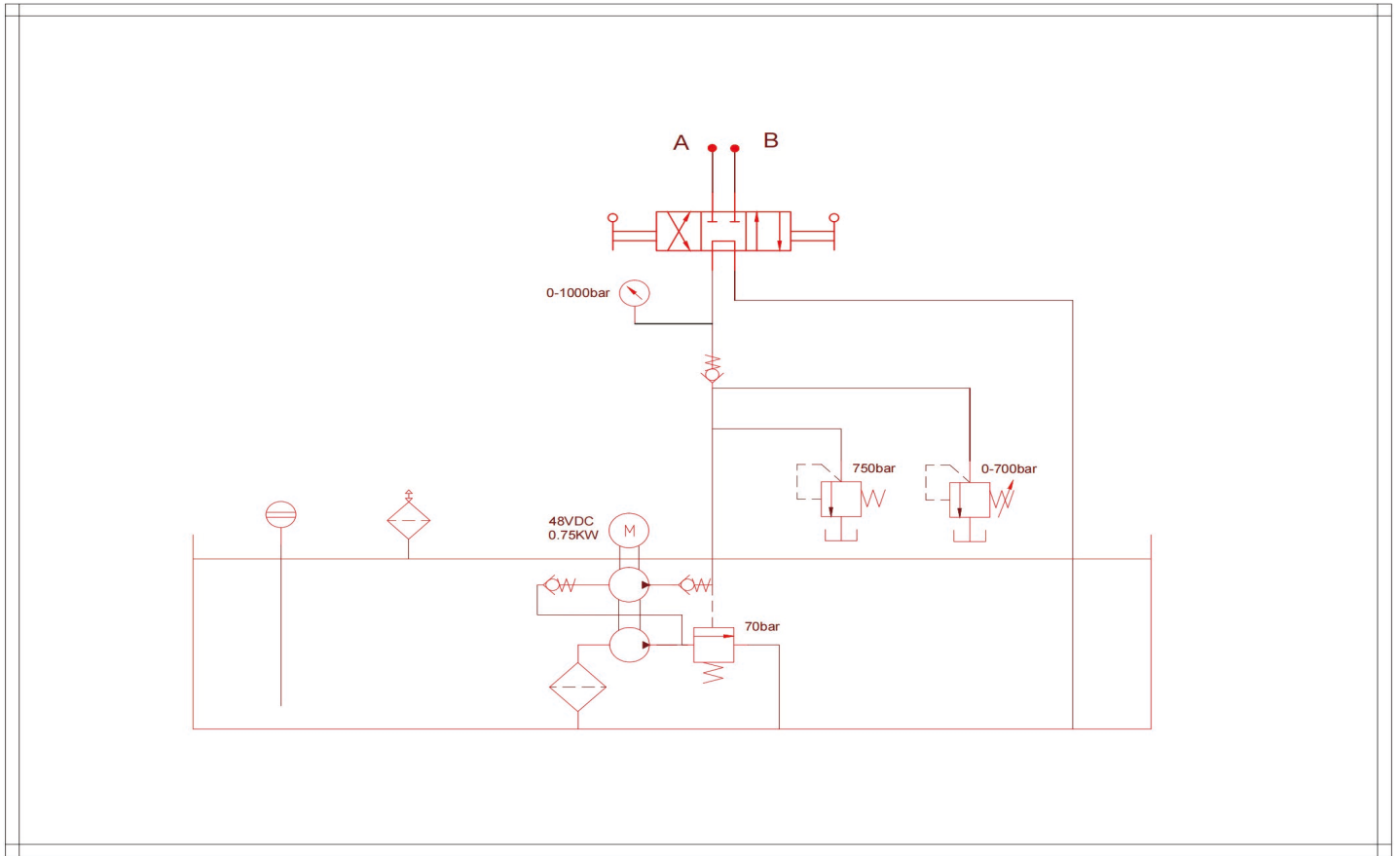
Performance :

- Powerful Performance: Equipped with an intelligent chip, the product performs excellently in operation and processing.
- Large Capacity: It has a large capacity, meeting more usage requirements.
- Portable Design: The product is designed for easy carrying, facilitating users in various scenarios.
- Shock and Impact Resistance: It has the ability to resist shock and impact, effectively protecting internal components when subjected to external forces and improving the product's durability.

▼BTW700 Outline Dimensional Drawing :



▼BTW700 Hydraulic Schematic Diagram:



▼BTW700 Pressure Flow Diagram :

