

▼ BRD Precision Production Cylinder

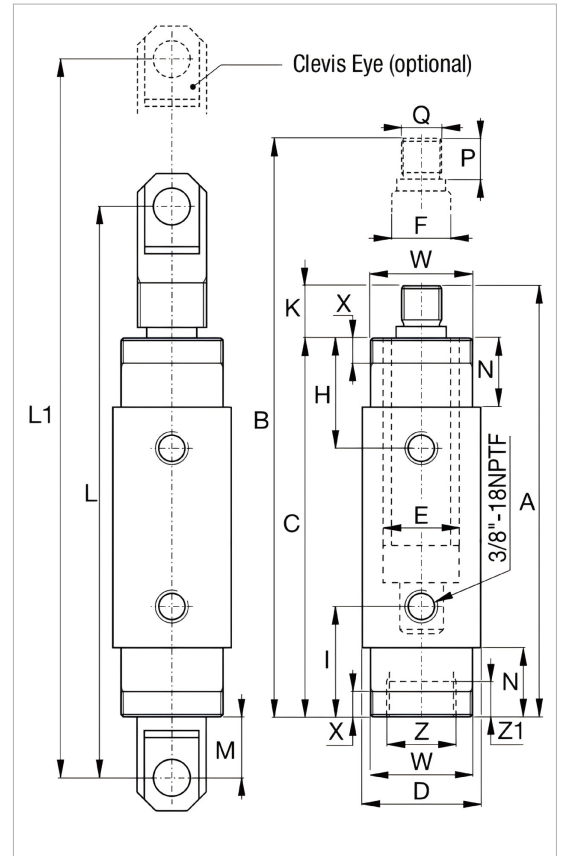


Rated Pressure: 70MPa

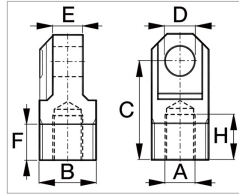
Rated Tonnage: 4-23ton

Stroke Range: 28-260mm

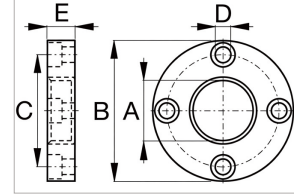
- Designed for long service life, ideal for production applications
- Unique mounting configurations simplify fixturing
- The cylinder body adopts gas nitriding and post-oxidation surface treatment processes, with the outer surface finished by painting, delivering superior corrosion resistance.
- Double-acting design provides bi-directional force for maximum versatility
- Standard plunger wiper reduces contamination ingress and extends cylinder service life
- Hardened and chrome-plated plunger minimizes wear and corrosion
- Hardened alloy steel guide ring prevents overtravel and reduces wear from side loads
- High-strength composite bearing supports side loads without damaging the cylinder bore
- Industrial-grade seals prevent costly leaks
- Optional imperial RD models available



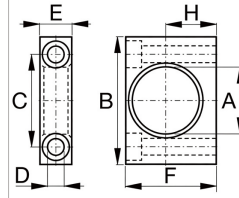
Load Capacity (ton)	Stroke (mm)	Model	Max. Load Capacity (kN)		Cylinder Effective Area (cm ²)		Oil Volume (cm ³)		Retracted Height A (mm)	Extended Height B (mm)	Cylinder Length C (mm)	Outer Dia. D (mm)	Cylinder Bore Dia. E (mm)	Plunger Dia. F (mm)
			push	pull	push	pull	push	pull						
4	28	BRD41	35	16	5.1	2.2	14	6	186	214	162	50	25.4	19
	79	BRD43	35	16	5.1	2.2	40	17	237	316	213	50	25.4	19
	155	BRD46	35	16	5.1	2.2	79	34	313	468	289	50	25.4	19
8	28	BRD91	80	44	11.4	6.3	32	18	223	251	198	63.5	38.1	25.4
	79	BRD93	80	44	11.4	6.3	90	50	274	353	249	63.5	38.1	25.4
	155	BRD96	80	44	11.4	6.3	177	98	350	505	325	63.5	38.1	25.4
	257	BRD910	80	44	11.4	6.3	293	162	452	709	427	63.5	38.1	25.4
15	159	BRD166	142	77	20.3	10.6	323	169	389	548	359	80	50.8	35
	260	BRD1610	142	77	20.3	10.6	528	276	491	751	461	80	50.8	35
23	159	BRD256	222	98	31.7	13.7	504	218	424	583	397	92	63.5	47.8
	260	BRD2510	222	98	31.7	13.7	824	356	526	786	499	92	63.5	47.8



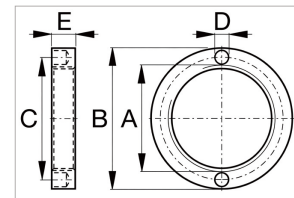
Clevis Eye
Threads onto
plunger or into
cylinder base.



Retainer Nut
For locking foot or
flange mountings.
Tightens onto
cylinder collar
threads (Included
with foot and flange
mounting kits).



Foot Mounting
Mounts onto
cylinder collar.



Foot Mounting
Mounts onto
cylinder collar.

Foot Mounting with Retainer Nut		Dimensions (mm)						
Model	BRD Cylinder (tons)	A	B	C	D	E	F	H
BAD141	4	42.1	80	58.0	10.5	20.0	57.0	31.8
BAD171	9	56.1	105	78.0	13.5	25.0	82.5	44.5
BAD181	16	70.1	127	95.2	20.0	35.0	100.0	52.4
BAD191	25	85.1	159	117.5	26.5	45.0	125.0	63.5
Flange Mounting with Retainer Nut		Dimensions (mm)						
Model	BRD Cylinder (tons)	A	B	C	D	E	F	H
BAD142	4	42.1	98.4	78.6	11.0	19.0	–	–
BAD172	9	56.1	121	98.4	11.0	25.4	–	–
BAD182	16	70.1	143	115.9	14.0	35.0	–	–
BAD192	25	85.1	165	135.7	17.0	44.5	–	–
Retainer Nut		Dimensions (mm)						
Model	BRD Cylinder (tons)	A	B	C	D	E	F	H
BAD143	4	M42×1.5	57	49.5	6.3	9.5	–	–
BAD173	9	M56×2	75	65.5	6.7	12.7	–	–
BAD183	16	M70×2	92	81.0	6.7	19.0	–	–
BAD193	25	M85×2	108	96.5	6.7	25.4	–	–
Clevis Eye (Refer to the table below for dimensions L, L1 and M.)		Dimensions (mm)						
Model	BRD Cylinder (tons)	A	B	C	D	E	F	H
BAD150	4	M16×1.5	M30×1.5	52.4	16.0	15.9	19.1	23.8
BAD151	9	M22×1.5	M42×1.5	57.1	20.0	25.4	25.4	23.8
BAD152	16	M30×1.5	M56×2	77.8	25.0	31.8	25.4	30.2
BAD153	25	M42×1.5	M70×2	77.8	32.0	38.2	25.4	27.0

Top to Oil Port H (mm)	Inlet Port to Base I (mm)	Plunger Protr. fr. Plgr. K (mm)	Lifting Lug Size			Outer Ring Thread Len. N (mm)	Plunger Thread Len. P (mm)	Plunger Male Thread Len. Q	Outer Ring Thread W	Cylinder Mount Dia.			Weight (kg)	Model
			L	L1	M					uter Ring Thread Len. X	Base Female Thread Len. Z	Base Thread Len. Z1		
47	47	24	258	286	41	29	22	M16x1.5	M42x1.5	11	M30x1.5	9	2.0	BRD41
47	47	24	308	387	41	29	22	M16x1.5	M42x1.5	11	M30x1.5	9	2.6	BRD43
47	47	24	385	540	41	29	22	M16x1.5	M42x1.5	11	M30x1.5	9	3.6	BRD46
57	57	25	295	323	38	38	22	M22x1.5	M56x2	14	M42x1.5	14	3.0	BRD91
57	57	25	346	425	38	38	22	M22x1.5	M56x2	14	M42x1.5	14	4.2	BRD93
57	57	25	422	577	38	38	22	M22x1.5	M56x2	14	M42x1.5	14	5.6	BRD96
57	57	25	524	781	38	38	22	M22x1.5	M56x2	14	M42x1.5	14	7.3	BRD910
73	73	30	492	651	52	54	28	M30x1.5	M70x2	22	M56x2	24	10.2	BRD166
73	73	30	593	853	52	54	28	M30x1.5	M70x2	22	M56x2	24	14.5	BRD1610
89	89	27	524	683	53	70	25	M42x1.5	M85x2	29	M70x2	26	16.0	BRD256
89	89	27	626	886	53	70	25	M42x1.5	M85x2	29	M70x2	26	20.3	BRD2510