

▼ BHP Master Puller Set



Capacity: 12,20,30,50ton

Reach: 252-700mm

Spread: 249-1100mm

Maximum working pressure:70MPa

- The RIVERLAKE puller kit features precise hydraulic control, ensuring fast, efficient, and safe pulling operations.
- Core components are made of high-quality forged steel, ensuring high reliability and durability.
- Equipped with a complete hydraulic kit, including a manual pump, high-pressure hose, hydraulic cylinder, pressure gauge, pressure gauge connector, and solid wood crate.
- The complete standard puller kit includes: a claw puller, a cross-position puller, a bearing cup puller, and a bearing separator; these items can be ordered individually (see item numbers 10, 20, 30, and 40).
- Warning: When using the cross-position puller (2 grip arms) or in combination with the puller claw hook and bearing pulling attachment, do not exceed 50% of the rated pulling distance capacity.

▼ Master Puller Set Selection Chart

Master Puller	Set Capacity ▶	12ton	20ton	30 ton	50ton
	Model Number ▶	BHP1752 ¹⁾	BHP2751G	BHP3751G	BHP5751G
Included Hydraulics	Set Weight ▶	37Kg	90Kg	172Kg	298Kg
•Hand Pump		P142	P392	P392	P80
•Cylinder		RCH1211	RCH202	RCH302	RCH603
•Saddle		—	HP2015	HP3015	HP5016
•Hose		HSP700-2-M	HSP700-2-M	HSP700-2-M	HSP700-2-M
•Gauge		HG100-60	HG100-100	HG100-100	HG100-100
• Gauge Adapter		GA3	GA3	GA3	GA3
▼ Included Pullers					
	10Grip Puller	BHP1762	BHP252	BHP352	BHP552
	20 Cross Bearing Puller	BHP1772	BHP262	BHP362	BHP562
	30 Bearing Cup Puller	BHP180	BHP280	BHP380	BHP580
	40Bearing Separator	BHP181	BHP282	BHP382	BHP582
	Case	Wooden Case Packaging			

•The maximum working capacity of the cylinder is 60 ton at 700 bar, while the rated working capacity of the puller is 540 bar.

※1)Including adapter FZ1630.

▼ BHP Grip Puller Set

Shown: BHP551G



Capacity: 12,20,30,50ton

Reach: 252-700mm

Spread: 249-1100mm

Maximum working pressure: 70MPa

Ordering Examples

Model BHP251G: Includes the BHP252 type jaw puller and complete hydraulic kit (manual pump, cylinder, saddle, hoses, pressure gauge, and pressure gauge connector).

Model BHP252: Includes only the jaw puller mechanical components and can be used with the user's existing hydraulic system.

- The RIVERLAKE puller kit features precise hydraulic control, ensuring fast, efficient, and safe pulling operations.
- Core components are made of high-quality forged steel, ensuring high reliability and durability.
- Available with or without a complete hydraulic kit.

▼ Grip Puller Set Selection Chart

Grip Puller Set	Set Capacity ▶	12ton	20ton	30 ton	50ton
Model Number ▶		BHP152 ¹⁾	BHP251G	BHP351G	BHP551G
Included Hydraulics Set Weight ▶		22	56	91	160
•Hand Pump		P142	P392	P392	P80
•Cylinder		RCH1211	RCH202	RCH302	RCH603
•Saddle		—	HP2015	HP3015	HP5016
•Hose		HSP700-2-M	HSP700-2-M	HSP700-2-M	HSP700-2-M
•Gauge		HG100-60	HG100-100	HG100-100	HG100-100
• Gauge Adapter		GA3	GA3	GA3	GA3
10 Grip Puller Model Number▶		BHP1762 *	BHP252 *	BHP352 *	BHP552 *
Maximum Spread (mm)	2-jaw	249	400	593	899
	3-jaw	249	499	800	1100
Maximum Reach (mm)	2-jaw	252	300	387	700
	3-jaw	252	300	387	700
Jaw (mm)	Thickness	15	20	24	30
	Width	23	27	38	39
Adjusting Screw (mm)	Thread	¾" - 16 UNF	1" - 8 UNC	1¼" - 7 UNC	1½" - 5.5 UNS
	Length	400	670	790	975
Case		Wooden Case Packaging			

*1) Including adapter FZ1630

Order number of jaw-type puller without hydraulic components

▼ BHP Cross Bearing Puller Set

Shown: BHP316G



Capacity: 12,20,30,50ton

Reach: 354-863mm

Spread: 266-570mm

Maximum working pressure: 70MPa

- The RIVERLAKE puller kit features precise hydraulic control, ensuring fast, efficient, and safe pulling operations.
- Core components are made of high-quality forged steel, ensuring high reliability and durability.

Cross Bearing Puller			
Manual pump (with pressure gauge)	Foot Pneumatic Pump	Electric Pump	Lithium Battery Pump
	PATG1102N	HC3005EVO32R	BPS700
BHP162	BHP161GA	BHP161G	BHP161GCE
BHP261G	BHP261GA	BHP261GE	BHP261GCE
BHP361G	BHP361GE	BHP361GE	BHP361GCE
BHP561G	BHP561GA	BHP561GCE	BHP561GCE

▼ Cross Bearing Puller Selection Chart

Puller Standard Kit	Load Capacity ▶	12ton	20ton	30 ton	50ton
	Model Number ▶	BHP162 ¹⁾	BHP261G	BHP361G	BHP561G
Included Hydraulics	Set Weight ▶	26	62	121	185
•Hand Pump		P142	P392	P392	P80
•Cylinder		RCH1211	RCH202	RCH302	RCH603
•Saddle		–	HP2015	HP3015	HP5016
•Hose		HSP700-2-M	HSP700-2-M	HSP700-2-M	HSP700-2-M
•Gauge		HG100-60	HG100-100	HG100-100	HG100-100
• Gauge Adapter		GA3	GA3	GA3	GA3
20 Cross Bearing Puller	Model Number ▶	BHP1772	BHP262	BHP362	BHP562
Spread (mm)	Maximum	266	351	454	570
	Minimum	106	139	179	220
Reach (mm)	Maximum	462	571	711	863
	Thread	3/4" - 16 UNF	1" - 8 UNC	1 1/4" - 7 UNC	1 1/2" - 5.5 UNS
Adjusting Screw (mm)	Length	400	675	795	975
	Length	105	239	203	609
Leg (mm)	Length	354	419	457	863
	Length	–	571	711	–
	Length	–	114	–	–
	Length	–	–	–	–
Upper Leg Ends (mm)	Thread	3/4" - 16 x25	3/4" - 16 x25	1-14 x35	1 1/4" - 12 x38
Lower Leg Ends (mm)	Thread	5/8" - 18 x25	5/8" - 18 x25	1-14 x27	1 1/4" - 12 x38
30 Bearing Cup Puller	Model Number ▶	BHP180	BHP280	BHP380	BHP580
40 Bearing Separato	Model Number ▶	BHP181	BHP282	BHP382	BHP582
Wooden Case		Wooden Case Packaging			

▼ Bearing Cup Puller

Shown: BHP380



Capacity: 12,20,30,50ton

Reach: 115-145mm

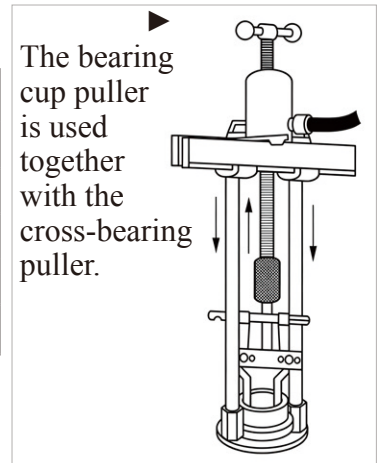
Spread: 110-359mm

Maximum working pressure: 70MPa

- Made of high strength steel alloy
- Easily adapted to Cross Bearing Pullers for fast and efficient removal of the most difficult parts
- Adjustable to fit a variety of bearings and seals.
- Bearing puller capacity: 50% of puller capacity.

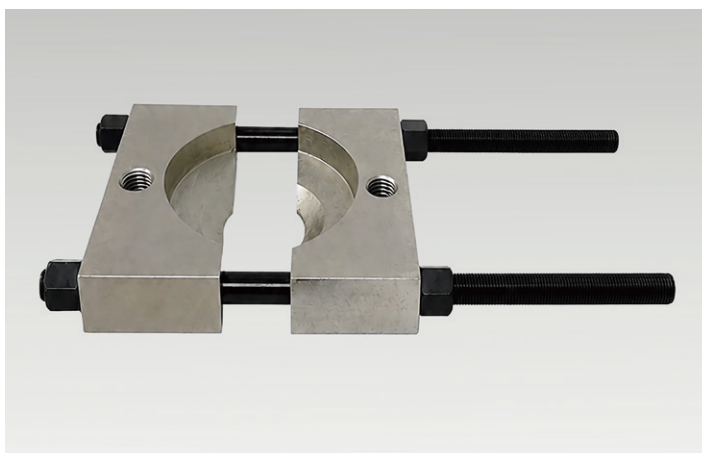
▼ Bearing Cup Puller Selection Chart

Capacity ▶		12ton	20ton	30 ton	50ton
30 Bearing Cup Puller	Model ▶	BHP180	BHP280	BHP380	BHP580
Spread (mm)	Max.	110	220	359	359
	Min.	26	25	50	50
Reach (mm)	Min.	110	140	145	145
Center Screw	Thread	¾" - 16 UNF	1" - 8 UNC	1¼" - 7 UNC	1½" - 5.5 UNS

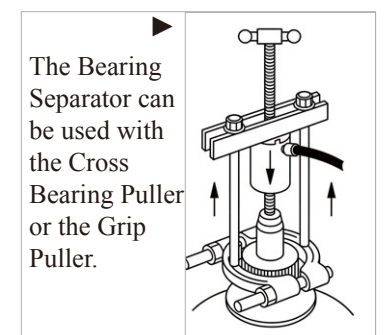


▼ Bearing Puller

Shown: BHP382



- Bearing Separator shown with Crosshead Puller Attachment.
- The Bearing Separator has wedge shaped edges for placing puller behind hard to reach bearings, gears, etc., where clearance prevents direct application of grip puller arms.
- The Bearing Separator can be used with the Cross Bearing Puller or the Grip Puller.
- Bearing Separator rate at 50% of puller capacity



▼ Bearing Puller Selection Chart

Capacity		12ton	20ton	30 ton	50ton
40 Bearing Puller	Model Number ▶	BHP181	BHP282	BHP382	BHP582
Spread (mm)	Max.	104	130	245	245
	Min.	25	9	17	17
Width (mm)		126	150	292	292
Thread		⅝" - 18 UNF	¾" - 18 UNF	1" - 14 UNS	1¼" - 12 UNF