

# TG-Series, Hydraulic Bolt Tensioner

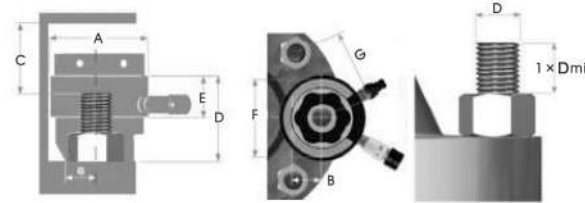
# TG-Series, Hydraulic Bolt Tensioner

RIVERLAKE®



Interchangeable type, Gravity restoration.

- Bolt Range:** 3/4" - 4" M20-M100
- Load Capacity:** 228-2643KN
- Stroke:** 10-15mm
- Max. Operating Pressure:** 1500bar



**Ordering Example**

Please select the adaptor kit with the load cell.

Example, to order a complete tensioner for a M20X25 threaded bolt order :

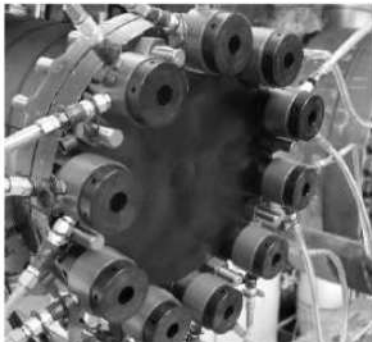
- Load cell: TG1
- Adaptor kit: TG1-M2025

If you also want a stretch cylinder to fit a variety of bolt specifications, please select a variety of stretch heads according to the parameter list.

**Features**

- Light weight and compact structure suits operations in small space.
- Special steel body and advanced surface treatment with perfect rust and corrosion resistance.
- Strong versatility and high adaptability.
- Synchronous application available.
- Default maximum working pressure of 1500 bar fits high pressure manual pump, high pressure pneumatic pump and high pressure electric pump.

Multiple connected in turn to realize synchro-draw.



Load Cell Model Number	Adaptor Kit Model Number	Thread Size		Adaptor Kit Model Number	Bolt Load KN	Stroke mm	Ram Area		A	B	C	D	E	F	G	Weight kg			
		Inch	mm				In <sup>2</sup>	mm <sup>2</sup>											
		Imperial	Metric				mm												
TG1	TG1-0750 U10	3/4"-10UNC	M20x2.5	TG1-M2025	227.81	10	2.354	1518.76	73.5	21.0	67.0	71.0	45	62	49.5	2.0			
	TG1-0875 U09	7/8"-9UNC	M22x2.5	TG1-M2225													63	53	1.9
	TG1-1000 U08	1"-8UN	M24x3	TG1-M2430													69	58.5	1.9
	TG1-1125 U08	1.1/8"-8UN	M27x3	TG1-M2730													74	63.5	1.9
TG2	TG2-1125 U08	1.1/8"-8UN	M27x3	TG2-M2730	443.00	15	4.578	2953.69	102	27.0	85.0	92.0	54	82	67.6	4.8			
			M30x3.5	TG2-M3035													85	69	4.9
	TG2-1250 U08	1.1/4"-8UN	M33x3.5	TG2-M3335													85	72	4.6
	TG2-1375 U08	1.3/8"-8UN	M36x4	TG2-M3640													91	78	4.6
	TG2-1500 U08	1.1/2"-8UN	M39x4	TG2-M3940													90	80	4.7
TG3	TG3-1500 U08	1.1/2"-8UN	M39x4	TG3-M3940	810.85	15	8.379	5405.70	133	36.5	98.0	109.0	56	97	83.5	9.5			
	TG3-1625 U08	1.5/8"-8UN	M42x4.5	TG3-M4245													110	92.5	9.0
	TG3-1750 U08	1.3/4"-8UN	M45x4.5	TG3-M4545													115	98	9.3
	TG3-1875 U08	1.7/8"-8UN	M48x5	TG3-M4850													116	101	9.0
TG4	TG3-2000 U08	2"-8UN	M52x5	TG3-M5250	1273.16	15	13.159	8489.96	163	42.5	95.0	116.0	57	120	106	8.6			
	TG4-1875 U08	1.7/8"-8UN	M48x5	TG4-M4850													130	108	16.1
	TG4-2000 U08	2"-8UN	M52x5	TG4-M5250													124	108	15.7
	TG4-2250 U08	2.1/4"-8UN	M56x5.5	TG4-M5655													134	118.5	15.8
			M60x5.5	TG4-M6055													150	127	18.3
TG5	TG4-2500 U08	2.1/2"-8UN	M64x6	TG4-M6460	1828.99	15	18.905	12196.45	193	58.0	102.5	130.0	60	147	130.5	22.7			
			M68x6	TG5-M6860													160	138	23.6
	TG5-2500 U08	2.1/2"-8UN	M64x6	TG5-M6460													147	130.5	22.7
	TG5-2750 U08	2.3/4"-8UN	M72x6	TG5-M7260													161	143	24.7
	TG5-3000 U08	3"-8UN	M76x6	TG5-M7660													170	153	22.2
	TG6-3000 U08	3"-8UN	M76x6	TG6-M7660													170	153	38.5
TG6			M80x6	TG6-M8060	2643.43	15	27.323	17627.48	233	78.0	117.0	154.0	64	178	155.5	38.3			
	TG6-3250 U08	3.1/4"-8UN	M85x6	TG6-M8560													182	165.5	38.1
	TG6-3500 U08	3.1/2"-8UN	M90x6	TG6-M9060													191	174.5	37.0
	TG6-3750 U08	3.3/4"-8UN	M95x6	TG6-M9560													210	183.5	37.0
	TG6-4000 U08	4"-8UN	M100x6	TG6-M10060													220	200	36.4



# TW-Series, Hydraulic Bolt Tensioner For Wind Turbines

RIVERLAKE®



**Bolt Range: M30-M64**

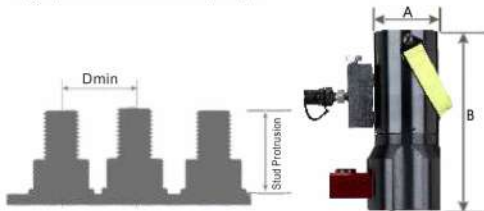
**Load Capacity: 465-2221KN**

**Stroke: 8-10mm**

**Max. Operating Pressure: 1500bar**

## Features

- Light weight and compact structure suits operations in small space.
- Special steel body and advanced surface treatment with perfect rust and corrosion resistance.
- Double stage cylinder design to increase the stretching length.
- Automatic retraction mechanism for heavy duty purpose
- Rated working pressure of 1500 bar fits high pressure manual pumps, high pressure pneumatic pumps and high pressure electric pumps.



Model Number	Bolt Diameter	Stud Protrusion		Max Stroke	Maximum Load		Hydraulic Pressure Area		Dimensions(mm)			Weight
		Min	Max		KN	lbs	mm <sup>2</sup>	in <sup>2</sup>	A	B	D	
		mm			mm			mm	mm	mm	kg	
TW4B	M30	59	69	8	465.38	104622	3447.21	5.343	72	205	64	6.16
TW5B	M33	64	73	10	575.8	129444	4266.09	6.611	79	217.5	71	7.24
TW6B	M36	71	81	10	678.26	152478	5024.05	7.787	84.5	229.5	77	8.75
TW8B	M39	76	86	10	810.58	182225	6004.2	9.307	92	263	83	11.12
TW9B	M42	83	93	10	929.67	208999	6886.37	10.674	97	262.5	95	12.75
TW10B	M45	88	98	10	1079.48	242682	7996.12	12.394	155	275.5	94.5	15.86
TW12B	M48	94	104	10	1221.57	274620	9048.57	14.025	111	286.5	100.5	17.84
TW16B	M56	110	120	10	1686.19	379070	12490.29	19.359	132	314	115	26.5
TW22B	M64	124	134	10	2221	499300	16461.3	25.515	150	352	124	35